

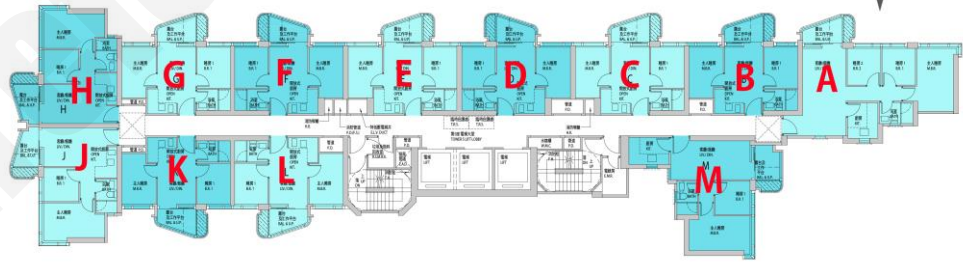
新盤價單表

首岸 第四期

價單1及2號

以最高9%折扣計算

制作日期: 2026-06-09



B : 2房 338'		
樓層	訂價	折實價5%
3	\$7,561,000 @\$22,370	\$6,880,510 @\$20,357
5	\$7,622,000 @\$22,550	\$6,936,020 @\$20,521
6	\$7,670,000 @\$22,692	\$6,979,700 @\$20,650
7	\$7,711,000 @\$22,814	\$7,017,010 @\$20,760
8	\$7,757,000 @\$22,950	\$7,058,870 @\$20,884
9	\$7,786,000 @\$23,036	\$7,085,260 @\$20,962
10	\$7,815,000 @\$23,121	\$7,111,650 @\$21,040
11	\$7,842,000 @\$23,201	\$7,136,220 @\$21,113
12	\$7,871,000 @\$23,287	\$7,162,610 @\$21,191
15	\$7,898,000 @\$23,367	\$7,187,180 @\$21,264
16	\$7,926,000 @\$23,450	\$7,212,660 @\$21,339
17	\$7,968,000 @\$23,574	\$7,250,880 @\$21,452
18	\$8,020,000 @\$23,728	\$7,298,200 @\$21,592
19	\$8,058,000 @\$23,840	\$7,332,780 @\$21,695
20	\$8,106,000 @\$23,982	\$7,376,460 @\$21,824
21	\$8,148,000 @\$24,107	\$7,414,680 @\$21,937
22	\$8,183,000 @\$24,210	\$7,446,530 @\$22,031
23	\$8,224,000 @\$24,331	\$7,483,840 @\$22,142
25	\$8,266,000 @\$24,456	\$7,522,060 @\$22,255
26	\$8,316,000 @\$24,604	\$7,567,560 @\$22,389
27	\$8,351,000 @\$24,707	\$7,599,410 @\$22,483
28	\$8,382,000 @\$24,799	\$7,627,620 @\$22,567
A : 3房 585'		
樓層	訂價	折實價5%
5	\$13,002,000 @\$22,226	\$11,831,820 @\$20,225
7	\$13,164,000 @\$22,503	\$11,979,240 @\$20,477
9	\$13,352,000 @\$22,824	\$12,150,320 @\$20,770
11	\$13,507,000 @\$23,089	\$12,291,370 @\$21,011
12	\$13,566,000 @\$23,190	\$12,345,060 @\$21,103
16	\$13,665,000 @\$23,359	\$12,435,150 @\$21,257
18	\$13,758,000 @\$23,518	\$12,519,780 @\$21,401
20	\$13,953,000 @\$23,851	\$12,697,230 @\$21,705
21	\$14,062,000 @\$24,038	\$12,796,420 @\$21,874

D : 2房 342'		
樓層	訂價	折實價5%
3	\$7,641,000 @\$22,342	\$6,953,310 @\$20,331
5	\$7,695,000 @\$22,500	\$7,002,450 @\$20,475
6	\$7,743,000 @\$22,640	\$7,046,130 @\$20,603
7	\$7,785,000 @\$22,763	\$7,084,350 @\$20,714
8	\$7,816,000 @\$22,854	\$7,112,560 @\$20,797
9	\$7,840,000 @\$22,924	\$7,134,400 @\$20,861
10	\$7,868,000 @\$23,006	\$7,159,880 @\$20,935
11	\$7,895,000 @\$23,085	\$7,184,450 @\$21,007
12	\$7,924,000 @\$23,170	\$7,210,840 @\$21,084
17	\$8,019,000 @\$23,447	\$7,297,290 @\$21,337
18	\$8,072,000 @\$23,602	\$7,345,520 @\$21,478
19	\$8,117,000 @\$23,734	\$7,386,470 @\$21,598
20	\$8,166,000 @\$23,877	\$7,431,060 @\$21,728
21	\$8,221,000 @\$24,038	\$7,481,110 @\$21,875
22	\$8,285,000 @\$24,225	\$7,539,350 @\$22,045
23	\$8,354,000 @\$24,427	\$7,602,140 @\$22,228
25	\$8,390,000 @\$24,532	\$7,634,900 @\$22,324
26	\$8,418,000 @\$24,614	\$7,660,380 @\$22,399
27	\$8,447,000 @\$24,699	\$7,686,770 @\$22,476

C : 2房 344'		
樓層	訂價	折實價5%
6	\$7,763,000 @\$22,567	\$7,064,330 @\$20,536
7	\$7,806,000 @\$22,692	\$7,103,460 @\$20,650
8	\$7,840,000 @\$22,791	\$7,134,400 @\$20,740
9	\$7,863,000 @\$22,858	\$7,155,330 @\$20,800
10	\$7,893,000 @\$22,945	\$7,182,630 @\$20,880
11	\$7,921,000 @\$23,026	\$7,208,110 @\$20,954
12	\$7,951,000 @\$23,113	\$7,235,410 @\$21,033
17	\$8,058,000 @\$23,424	\$7,332,780 @\$21,316
18	\$8,105,000 @\$23,561	\$7,375,550 @\$21,441
19	\$8,152,000 @\$23,698	\$7,418,320 @\$21,565
20	\$8,200,000 @\$23,837	\$7,462,000 @\$21,692
21	\$8,259,000 @\$24,009	\$7,515,690 @\$21,848
22	\$8,324,000 @\$24,198	\$7,574,840 @\$22,020
23	\$8,394,000 @\$24,401	\$7,638,540 @\$22,205
25	\$8,446,000 @\$24,552	\$7,685,860 @\$22,343
26	\$8,475,000 @\$24,637	\$7,712,250 @\$22,419
27	\$8,505,000 @\$24,724	\$7,739,550 @\$22,499
28	\$8,538,000 @\$24,820	\$7,769,580 @\$22,586

E : 2房 342'		
樓層	訂價	折實價5%
6	\$7,771,000 @\$22,722	\$7,071,610 @\$20,677
7	\$7,798,000 @\$22,801	\$7,096,180 @\$20,749
8	\$7,830,000 @\$22,895	\$7,125,300 @\$20,834
9	\$7,854,000 @\$22,965	\$7,147,140 @\$20,898
10	\$7,881,000 @\$23,044	\$7,171,710 @\$20,970
11	\$7,909,000 @\$23,126	\$7,197,190 @\$21,044
12	\$7,937,000 @\$23,208	\$7,222,670 @\$21,119
17	\$8,040,000 @\$23,509	\$7,316,400 @\$21,393
18	\$8,085,000 @\$23,640	\$7,357,350 @\$21,513
19	\$8,131,000 @\$23,775	\$7,399,210 @\$21,635
20	\$8,181,000 @\$23,921	\$7,444,710 @\$21,768
21	\$8,236,000 @\$24,082	\$7,494,760 @\$21,915
22	\$8,299,000 @\$24,266	\$7,552,090 @\$22,082
23	\$8,369,000 @\$24,471	\$7,615,790 @\$22,268
M : 2房 469'		
樓層	訂價	折實價5%
6	\$10,509,000 @\$22,407	\$9,563,190 @\$20,391
7	\$10,595,000 @\$22,591	\$9,641,450 @\$20,557
9	\$10,720,000 @\$22,857	\$9,755,200 @\$20,800
10	\$10,788,000 @\$23,002	\$9,817,080 @\$20,932
12	\$10,939,000 @\$23,324	\$9,954,490 @\$21,225
16	\$11,048,000 @\$23,557	\$10,053,680 @\$21,436
20	\$11,282,000 @\$24,055	\$10,266,620 @\$21,890
21	\$11,391,000 @\$24,288	\$10,365,810 @\$22,102

紅色為最高售價、最高平均呎價；藍色為最低售價、最低平均呎價
 以上的物業資料只供參考，一切以發展商最新公布為準，如有任何資料錯漏本網頁不會承擔任何責任。