

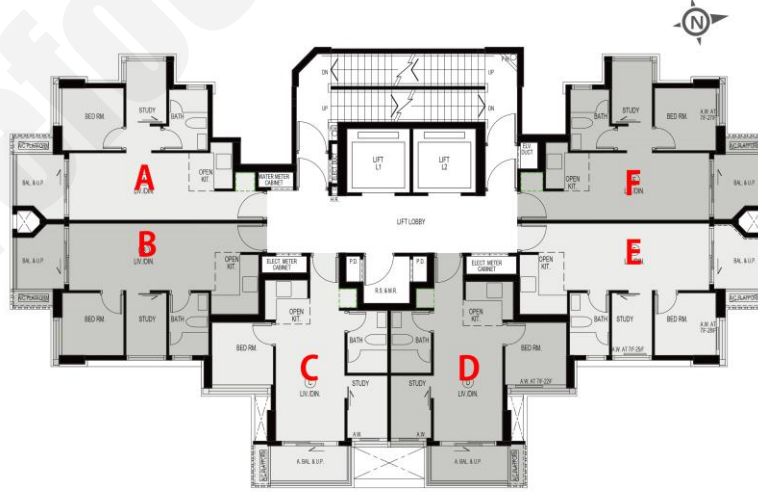
新盤價單表

映居

價單1號

以最高12%折扣計算

制作日期: 2026-03-16



C : 1房 305'/338'/343'		
樓層	訂價	折實價12%
5	\$7,460,300 @\$24,460	\$6,117,446 @\$20,057
6	\$6,816,000 @\$19,872	\$5,589,120 @\$16,295
7	\$7,002,400 @\$20,717	\$5,741,968 @\$16,988
8	\$7,128,500 @\$21,090	\$5,845,370 @\$17,294
9	\$7,192,100 @\$21,278	\$5,897,522 @\$17,448
10	\$7,256,900 @\$21,470	\$5,950,658 @\$17,605
11	\$7,322,800 @\$21,665	\$6,004,696 @\$17,765
15	\$7,479,600 @\$22,129	\$6,133,272 @\$18,146
16	\$7,621,700 @\$22,549	\$6,249,794 @\$18,491

D : 1房 301'/339'		
樓層	訂價	折實價12%
5	\$7,551,200 @\$25,087	\$6,191,984 @\$20,571
6	\$6,838,700 @\$20,173	\$5,607,734 @\$16,542
7	\$7,024,000 @\$20,720	\$5,759,680 @\$16,990
8	\$7,150,100 @\$21,092	\$5,863,082 @\$17,295
9	\$7,213,700 @\$21,279	\$5,915,234 @\$17,449
10	\$7,278,500 @\$21,471	\$5,968,370 @\$17,606
11	\$7,344,400 @\$21,665	\$6,022,408 @\$17,765
15	\$7,501,200 @\$22,127	\$6,150,984 @\$18,144
16	\$7,644,400 @\$22,550	\$6,268,408 @\$18,491

E : 1房 343'		
樓層	訂價	折實價12%
5	\$6,660,300 @\$19,418	\$5,461,446 @\$15,923
6	\$6,579,600 @\$19,183	\$5,395,272 @\$15,730
7	\$6,842,100 @\$19,948	\$5,610,522 @\$16,357
8	\$6,983,100 @\$20,359	\$5,726,142 @\$16,694
9	\$7,045,600 @\$20,541	\$5,777,392 @\$16,844
10	\$7,109,200 @\$20,727	\$5,829,544 @\$16,996
11	\$7,172,800 @\$20,912	\$5,881,696 @\$17,148
15	\$7,326,200 @\$21,359	\$6,007,484 @\$17,515
16	\$7,466,000 @\$21,767	\$6,122,120 @\$17,849

A : 1房 347'		
樓層	訂價	折實價12%
7	\$7,406,900 @\$21,346	\$6,073,658 @\$17,503
8	\$7,539,900 @\$21,729	\$6,182,718 @\$17,818
9	\$7,608,100 @\$21,925	\$6,238,642 @\$17,979
10	\$7,676,200 @\$22,122	\$6,294,484 @\$18,140
11	\$7,744,400 @\$22,318	\$6,350,408 @\$18,301
15	\$7,930,800 @\$22,855	\$6,503,256 @\$18,741
16	\$8,142,100 @\$23,464	\$6,676,522 @\$19,241

F : 1房 345'		
樓層	訂價	折實價12%
5	\$7,019,400 @\$20,346	\$5,755,908 @\$16,684
6	\$6,970,600 @\$20,205	\$5,715,892 @\$16,568
7	\$7,158,100 @\$20,748	\$5,869,642 @\$17,013
8	\$7,287,600 @\$21,123	\$5,975,832 @\$17,321
9	\$7,352,400 @\$21,311	\$6,028,968 @\$17,475
10	\$7,418,300 @\$21,502	\$6,083,006 @\$17,632
11	\$7,485,300 @\$21,697	\$6,137,946 @\$17,791
15	\$7,633,100 @\$22,125	\$6,259,142 @\$18,142
16	\$7,739,900 @\$22,434	\$6,346,718 @\$18,396

B : 1房 345'		
樓層	訂價	折實價12%
7	\$7,133,100 @\$20,676	\$5,849,142 @\$16,954
8	\$7,261,500 @\$21,048	\$5,954,430 @\$17,259
9	\$7,326,200 @\$21,235	\$6,007,484 @\$17,413
10	\$7,392,100 @\$21,426	\$6,061,522 @\$17,570
11	\$7,459,200 @\$21,621	\$6,116,544 @\$17,729
15	\$7,650,100 @\$22,174	\$6,273,082 @\$18,183
16	\$7,893,300 @\$22,879	\$6,472,506 @\$18,761

紅色為最高售價、最高平均呎價；藍色為最低售價、最低平均呎價  
 以上的物業資料只供參考，一切以發展商最新公布為準，如有任何資料錯漏本網頁不會承擔任何責任。