

新盤價單表

東邊街9號

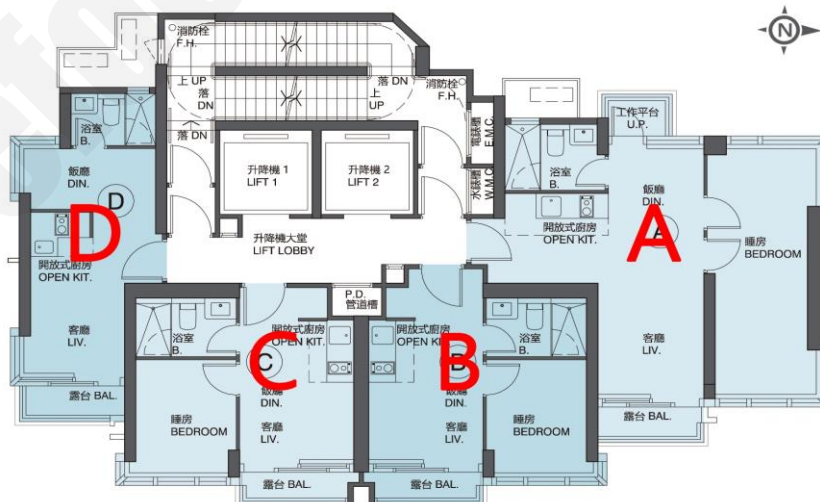
價單1號

以最高10%折扣計算

制作日期: 2025-07-07



A : 1房 488'/508'		
樓層	訂價	折實價10%
6	\$11,982,100 @\$23,587	\$10,783,890 @\$21,228
7	\$12,042,000 @\$23,705	\$10,837,800 @\$21,334
8	\$12,102,200 @\$23,823	\$10,891,980 @\$21,441
9	\$12,162,700 @\$23,942	\$10,946,430 @\$21,548
10	\$12,223,600 @\$24,062	\$11,001,240 @\$21,656
11	\$12,284,700 @\$24,182	\$11,056,230 @\$21,764
18	\$12,880,400 @\$26,394	\$11,592,360 @\$23,755
19	\$12,944,900 @\$26,526	\$11,650,410 @\$23,874



B : 1房 282'		
樓層	訂價	折實價10%
6	\$6,141,300 @\$21,778	\$5,527,170 @\$19,600
7	\$6,172,100 @\$21,887	\$5,554,890 @\$19,698
8	\$6,203,000 @\$21,996	\$5,582,700 @\$19,797
9	\$6,234,000 @\$22,106	\$5,610,600 @\$19,896
10	\$6,265,100 @\$22,217	\$5,638,590 @\$19,995
11	\$6,296,400 @\$22,328	\$5,666,760 @\$20,095
12	\$6,485,300 @\$22,998	\$5,836,770 @\$20,698

C : 1房 275'		
樓層	訂價	折實價10%
6	\$5,912,600 @\$21,500	\$5,321,340 @\$19,350
7	\$5,942,100 @\$21,608	\$5,347,890 @\$19,447
8	\$5,971,800 @\$21,716	\$5,374,620 @\$19,544
9	\$6,001,700 @\$21,824	\$5,401,530 @\$19,642
10	\$6,031,700 @\$21,933	\$5,428,530 @\$19,740
11	\$6,061,900 @\$22,043	\$5,455,710 @\$19,839
12	\$6,243,700 @\$22,704	\$5,619,330 @\$20,434

D : 開放式/1房 249'		
樓層	訂價	折實價10%
6	\$5,228,400 @\$20,998	\$4,705,560 @\$18,898
7	\$5,335,300 @\$21,427	\$4,801,770 @\$19,284
8	\$5,362,000 @\$21,534	\$4,825,800 @\$19,381
9	\$5,388,800 @\$21,642	\$4,849,920 @\$19,478
10	\$5,415,700 @\$21,750	\$4,874,130 @\$19,575
11	\$5,442,800 @\$21,859	\$4,898,520 @\$19,673
12	\$5,606,100 @\$22,514	\$5,045,490 @\$20,263
15	\$5,634,100 @\$22,627	\$5,070,690 @\$20,364

紅色為最高售價、最高平均呎價；藍色為最低售價、最低平均呎價