

新盤價單表

Double Coast I

價單1號

以最高12%折扣計算
制作日期: 2024-10-24



Tower 3

3座G: 開放式 265'		
樓層	訂價	折實價12%
1	\$4,801,000 @\$18,117	\$4,224,880 @\$15,943
2	\$4,852,000 @\$18,309	\$4,269,760 @\$16,112
3	\$4,963,000 @\$18,728	\$4,367,440 @\$16,481
5	\$5,026,000 @\$18,966	\$4,422,880 @\$16,690
6	\$5,038,000 @\$19,011	\$4,433,440 @\$16,730
7	\$5,051,000 @\$19,060	\$4,444,880 @\$16,773
8	\$5,102,000 @\$19,253	\$4,489,760 @\$16,942
9	\$5,115,000 @\$19,302	\$4,501,200 @\$16,986
10	\$5,127,000 @\$19,347	\$4,511,760 @\$17,026

3座H: 1房 324'		
樓層	訂價	折實價12%
1	\$5,943,000 @\$18,343	\$5,229,840 @\$16,141
2	\$6,006,000 @\$18,537	\$5,285,280 @\$16,313
3	\$6,144,000 @\$18,963	\$5,406,720 @\$16,687
5	\$6,221,000 @\$19,201	\$5,474,480 @\$16,897
6	\$6,237,000 @\$19,250	\$5,488,560 @\$16,940
7	\$6,253,000 @\$19,299	\$5,502,640 @\$16,983
8	\$6,315,000 @\$19,491	\$5,557,200 @\$17,152
9	\$6,331,000 @\$19,540	\$5,571,280 @\$17,195
10	\$6,347,000 @\$19,590	\$5,585,360 @\$17,239
11	\$6,363,000 @\$19,639	\$5,599,440 @\$17,282
15	\$6,395,000 @\$19,738	\$5,627,600 @\$17,369

3座J: 2房 441/445'		
樓層	訂價	折實價12%
1	\$8,183,000 @\$18,389	\$7,201,040 @\$16,182
2	\$8,269,000 @\$18,582	\$7,276,720 @\$16,352
3	\$8,459,000 @\$19,009	\$7,443,920 @\$16,728
5	\$8,566,000 @\$19,249	\$7,538,080 @\$16,940
6	\$8,587,000 @\$19,297	\$7,556,560 @\$16,981
7	\$8,609,000 @\$19,346	\$7,575,920 @\$17,025
8	\$8,617,000 @\$19,540	\$7,582,960 @\$17,195
9	\$8,639,000 @\$19,590	\$7,602,320 @\$17,239
10	\$8,660,000 @\$19,637	\$7,620,800 @\$17,281
11	\$8,682,000 @\$19,687	\$7,640,160 @\$17,325
15	\$8,725,000 @\$19,785	\$7,678,000 @\$17,410
16	\$8,747,000 @\$19,834	\$7,697,360 @\$17,454
17	\$8,769,000 @\$19,884	\$7,716,720 @\$17,498
18	\$8,813,000 @\$19,984	\$7,755,440 @\$17,586

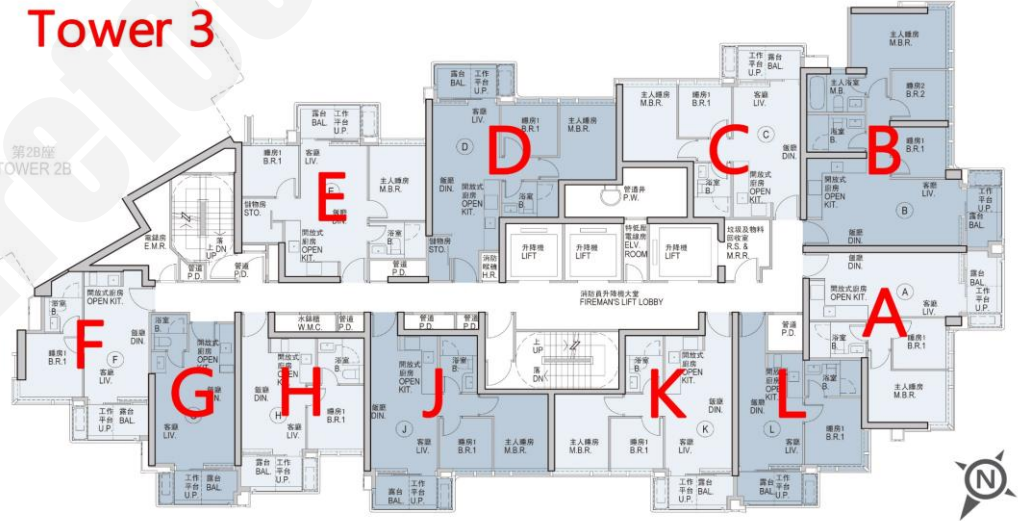
3座B: 2房 462'		
樓層	訂價	折實價12%
5	\$9,574,000 @\$20,723	\$8,425,120 @\$18,236
6	\$9,598,000 @\$20,775	\$8,446,240 @\$18,282
7	\$9,622,000 @\$20,827	\$8,467,360 @\$18,328
8	\$9,670,000 @\$20,931	\$8,509,600 @\$18,419
9	\$9,694,000 @\$20,983	\$8,530,720 @\$18,465
10	\$9,719,000 @\$21,037	\$8,552,720 @\$18,512

3座C: 2房 420'		
樓層	訂價	折實價12%
8	\$8,771,000 @\$20,883	\$7,718,480 @\$18,377
9	\$8,793,000 @\$20,936	\$7,737,840 @\$18,423
10	\$8,815,000 @\$20,988	\$7,757,200 @\$18,470
11	\$8,837,000 @\$21,040	\$7,776,560 @\$18,516
12	\$8,859,000 @\$21,093	\$7,795,920 @\$18,562
15	\$8,881,000 @\$21,145	\$7,815,280 @\$18,608
16	\$8,903,000 @\$21,198	\$7,834,640 @\$18,654
17	\$8,926,000 @\$21,252	\$7,854,880 @\$18,702
18	\$8,970,000 @\$21,357	\$7,893,600 @\$18,794
19	\$8,993,000 @\$21,412	\$7,913,840 @\$18,842
20	\$9,015,000 @\$21,464	\$7,933,200 @\$18,889
21	\$9,038,000 @\$21,519	\$7,953,440 @\$18,937
22	\$9,060,000 @\$21,571	\$7,972,800 @\$18,983
23	\$9,083,000 @\$21,626	\$7,993,040 @\$19,031

3座K: 2房 437'		
樓層	訂價	折實價12%
8	\$8,539,000 @\$19,540	\$7,514,320 @\$17,195
9	\$8,560,000 @\$19,588	\$7,532,800 @\$17,238
10	\$8,582,000 @\$19,638	\$7,552,160 @\$17,282
11	\$8,603,000 @\$19,686	\$7,570,640 @\$17,324
15	\$8,646,000 @\$19,785	\$7,608,480 @\$17,411
16	\$8,668,000 @\$19,835	\$7,627,840 @\$17,455
17	\$8,689,000 @\$19,883	\$7,646,320 @\$17,497
18	\$8,733,000 @\$19,984	\$7,685,040 @\$17,586

3座L: 1房 320'		
樓層	訂價	折實價12%
8	\$6,161,000 @\$19,253	\$5,421,680 @\$16,943
9	\$6,176,000 @\$19,300	\$5,434,880 @\$16,984
10	\$6,191,000 @\$19,347	\$5,448,080 @\$17,025
11	\$6,207,000 @\$19,397	\$5,462,160 @\$17,069
15	\$6,238,000 @\$19,494	\$5,489,440 @\$17,155
16	\$6,254,000 @\$19,544	\$5,503,520 @\$17,199

3座B: 3房 627'		
樓層	訂價	折實價12%
9	\$14,109,000 @\$22,502	\$12,415,920 @\$19,802
10	\$14,316,000 @\$22,833	\$12,598,080 @\$20,093
11	\$14,351,000 @\$22,888	\$12,628,880 @\$20,142
12	\$14,387,000 @\$22,946	\$12,660,560 @\$20,192



紅色為最高售價、最高平均呎價；藍色為最低售價、最低平均呎價

以上的物業資料只供參考，一切以發展商最新公布為準，如有任何資料錯漏本網頁不會承擔任何責任。

新盤價單表

Double Coast I

價單1號

以最高12%折扣計算

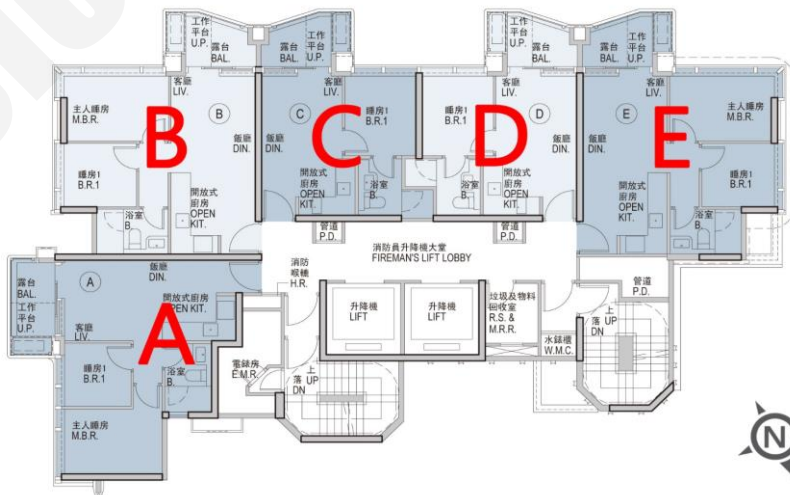
制作日期: 2024-10-24



Tower 5

5座A: 2房 427'		
樓層	訂價	折實價12%
2	\$9,165,000 @\$21,464	\$8,065,200 @\$18,888
3	\$9,220,000 @\$21,593	\$8,113,600 @\$19,001
5	\$9,276,000 @\$21,724	\$8,162,880 @\$19,117

5座C: 1房 305'		
樓層	訂價	折實價12%
2	\$6,956,000 @\$22,807	\$6,121,280 @\$20,070
3	\$6,998,000 @\$22,944	\$6,158,240 @\$20,191
5	\$7,040,000 @\$23,082	\$6,195,200 @\$20,312



紅色為最高售價、最高平均呎價；藍色為最低售價、最低平均呎價

以上的物業資料只供參考，一切以發展商最新公布為準，如有任何資料錯漏本網頁不會承擔任何責任。