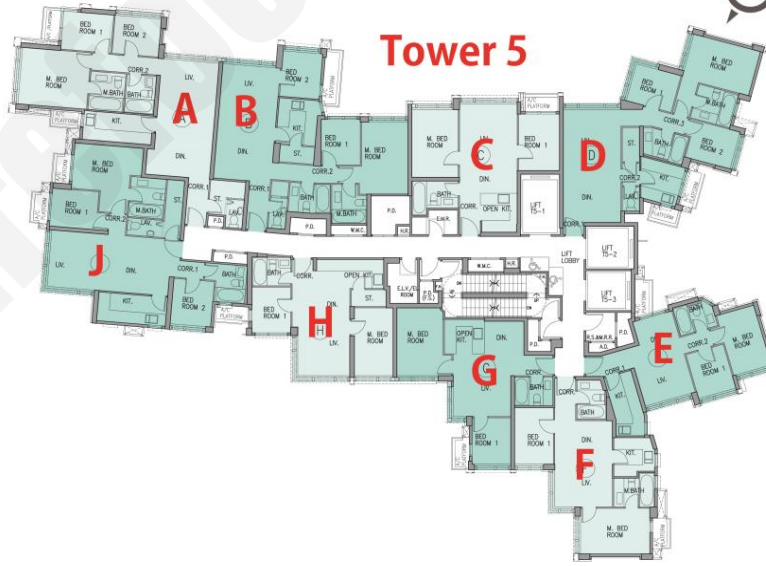


新盤價單表

Blue Coast II

價單1號

以最高14%折扣計算
制作日期: 2024-10-09



B: 3房 781'		
樓層	訂價	折實價14%
7	\$19,155,000 @ \$24,526	\$16,473,300 @ \$21,093
8	\$19,327,000 @ \$24,746	\$16,621,220 @ \$21,282
9	\$19,411,000 @ \$24,854	\$16,693,460 @ \$21,374
10	\$19,494,000 @ \$24,960	\$16,764,840 @ \$21,466
11	\$19,578,000 @ \$25,068	\$16,837,080 @ \$21,558
12	\$19,755,000 @ \$25,294	\$16,989,300 @ \$21,753
15	\$19,833,000 @ \$25,394	\$17,056,380 @ \$21,839
16	\$19,908,000 @ \$25,490	\$17,120,880 @ \$21,922
17	\$19,984,000 @ \$25,588	\$17,186,240 @ \$22,005
18	\$20,060,000 @ \$25,685	\$17,251,600 @ \$22,089
19	\$20,136,000 @ \$25,782	\$17,316,960 @ \$22,173
20	\$20,212,000 @ \$25,880	\$17,382,320 @ \$22,256
21	\$20,323,000 @ \$26,022	\$17,477,780 @ \$22,379
22	\$20,435,000 @ \$26,165	\$17,574,100 @ \$22,502
23	\$20,548,000 @ \$26,310	\$17,671,280 @ \$22,626
25	\$20,660,000 @ \$26,453	\$17,767,600 @ \$22,750
26	\$20,774,000 @ \$26,599	\$17,865,640 @ \$22,875
27	\$20,887,000 @ \$26,744	\$17,962,820 @ \$23,000
28	\$21,003,000 @ \$26,892	\$18,062,580 @ \$23,128
29	\$21,119,000 @ \$27,041	\$18,162,340 @ \$23,255
30	\$21,235,000 @ \$27,190	\$18,262,100 @ \$23,383
31	\$21,352,000 @ \$27,339	\$18,362,720 @ \$23,512
32	\$21,565,000 @ \$27,612	\$18,545,900 @ \$23,746
33	\$21,781,000 @ \$27,889	\$18,731,660 @ \$23,984
35	\$21,885,000 @ \$28,022	\$18,821,100 @ \$24,099
F: 2房 537'		
樓層	訂價	折實價14%
7	\$12,487,000 @ \$23,253	\$10,738,820 @ \$19,998
11	\$12,853,000 @ \$23,935	\$11,053,580 @ \$20,584
12	\$12,911,000 @ \$24,043	\$11,103,460 @ \$20,677
15	\$12,969,000 @ \$24,151	\$11,153,340 @ \$20,770
16	\$13,020,000 @ \$24,246	\$11,197,200 @ \$20,851
17	\$13,072,000 @ \$24,343	\$11,241,920 @ \$20,935
18	\$13,124,000 @ \$24,439	\$11,286,640 @ \$21,018
19	\$13,176,000 @ \$24,536	\$11,331,360 @ \$21,101
20	\$13,230,000 @ \$24,637	\$11,377,800 @ \$21,188
21	\$13,302,000 @ \$24,771	\$11,439,720 @ \$21,303
22	\$13,375,000 @ \$24,907	\$11,502,500 @ \$21,420
23	\$13,449,000 @ \$25,045	\$11,566,140 @ \$21,538
25	\$13,536,000 @ \$25,207	\$11,640,960 @ \$21,678
26	\$13,625,000 @ \$25,372	\$11,717,500 @ \$21,820
27	\$13,712,000 @ \$25,534	\$11,792,320 @ \$21,960
28	\$13,802,000 @ \$25,702	\$11,869,720 @ \$22,104
29	\$13,891,000 @ \$25,868	\$11,946,260 @ \$22,246
30	\$13,996,000 @ \$26,063	\$12,036,560 @ \$22,414

C: 2房 509'		
樓層	訂價	折實價14%
7	\$12,331,000 @ \$24,226	\$10,604,660 @ \$20,834
8	\$12,441,000 @ \$24,442	\$10,699,260 @ \$21,020
9	\$12,495,000 @ \$24,548	\$10,745,700 @ \$21,111
10	\$12,549,000 @ \$24,654	\$10,792,140 @ \$21,203
11	\$12,602,000 @ \$24,758	\$10,837,720 @ \$21,292
12	\$12,715,000 @ \$24,980	\$10,934,900 @ \$21,483
15	\$12,766,000 @ \$25,081	\$10,978,760 @ \$21,569
16	\$12,815,000 @ \$25,177	\$11,020,900 @ \$21,652
17	\$12,863,000 @ \$25,271	\$11,062,180 @ \$21,733
18	\$12,913,000 @ \$25,369	\$11,105,180 @ \$21,818
19	\$12,962,000 @ \$25,466	\$11,147,320 @ \$21,900
20	\$13,011,000 @ \$25,562	\$11,189,460 @ \$21,983
21	\$13,082,000 @ \$25,701	\$11,250,520 @ \$22,103
22	\$13,155,000 @ \$25,845	\$11,313,300 @ \$22,227
23	\$13,227,000 @ \$25,986	\$11,375,220 @ \$22,348
25	\$13,300,000 @ \$26,130	\$11,438,000 @ \$22,472
26	\$13,373,000 @ \$26,273	\$11,500,780 @ \$22,595
27	\$13,446,000 @ \$26,417	\$11,563,560 @ \$22,718
28	\$13,520,000 @ \$26,562	\$11,627,200 @ \$22,843
29	\$13,595,000 @ \$26,709	\$11,691,700 @ \$22,970
30	\$13,669,000 @ \$26,855	\$11,755,340 @ \$23,095
31	\$13,745,000 @ \$27,004	\$11,820,700 @ \$23,223
32	\$13,882,000 @ \$27,273	\$11,938,520 @ \$23,455
33	\$14,021,000 @ \$27,546	\$12,058,060 @ \$23,690
35	\$14,088,000 @ \$27,678	\$12,115,680 @ \$23,803

D: 3房 770'		
樓層	訂價	折實價14%
7	\$17,768,000 @ \$23,075	\$15,280,480 @ \$19,845
8	\$17,928,000 @ \$23,283	\$15,418,080 @ \$20,023
9	\$18,006,000 @ \$23,384	\$15,485,160 @ \$20,111
10	\$18,083,000 @ \$23,484	\$15,551,380 @ \$20,197
11	\$18,161,000 @ \$23,586	\$15,618,460 @ \$20,284
12	\$18,325,000 @ \$23,799	\$15,759,500 @ \$20,467
15	\$18,397,000 @ \$23,892	\$15,821,420 @ \$20,547
16	\$18,468,000 @ \$23,984	\$15,882,480 @ \$20,627
17	\$18,537,000 @ \$24,074	\$15,941,820 @ \$20,704
18	\$18,608,000 @ \$24,166	\$16,002,880 @ \$20,783
19	\$18,679,000 @ \$24,258	\$16,063,940 @ \$20,862
20	\$18,749,000 @ \$24,349	\$16,124,140 @ \$20,940
21	\$18,852,000 @ \$24,483	\$16,212,720 @ \$21,055
22	\$18,957,000 @ \$24,619	\$16,303,020 @ \$21,173
23	\$19,061,000 @ \$24,755	\$16,392,460 @ \$21,289
25	\$19,166,000 @ \$24,891	\$16,482,760 @ \$21,406
26	\$19,271,000 @ \$25,027	\$16,573,060 @ \$21,523
27	\$19,377,000 @ \$25,165	\$16,664,220 @ \$21,642
28	\$19,483,000 @ \$25,303	\$16,755,380 @ \$21,760
29	\$19,591,000 @ \$25,443	\$16,848,260 @ \$21,881
30	\$19,699,000 @ \$25,583	\$16,941,140 @ \$22,001
31	\$19,807,000 @ \$25,723	\$17,034,020 @ \$22,122
32	\$20,006,000 @ \$25,982	\$17,205,160 @ \$22,344
33	\$20,205,000 @ \$26,240	\$17,376,300 @ \$22,567
35	\$20,303,000 @ \$26,368	\$17,460,580 @ \$22,676

G: 2房 485'		
樓層	訂價	折實價14%
7	\$10,714,000 @ \$22,091	\$9,214,040 @ \$18,998
11	\$10,933,000 @ \$22,542	\$9,402,380 @ \$19,386
12	\$10,982,000 @ \$22,643	\$9,444,520 @ \$19,473
15	\$11,031,000 @ \$22,744	\$9,486,660 @ \$19,560
16	\$11,075,000 @ \$22,835	\$9,524,500 @ \$19,638
17	\$11,120,000 @ \$22,928	\$9,563,200 @ \$19,718
18	\$11,164,000 @ \$23,019	\$9,601,040 @ \$19,796
19	\$11,209,000 @ \$23,111	\$9,639,740 @ \$19,876
20	\$11,254,000 @ \$23,204	\$9,678,440 @ \$19,956
21	\$11,307,000 @ \$23,313	\$9,724,020 @ \$20,050
22	\$11,360,000 @ \$23,423	\$9,769,600 @ \$20,144
23	\$11,414,000 @ \$23,534	\$9,816,040 @ \$20,239
25	\$11,467,000 @ \$23,643	\$9,861,620 @ \$20,333
26	\$11,521,000 @ \$23,755	\$9,908,060 @ \$20,429
27	\$11,575,000 @ \$23,866	\$9,954,500 @ \$20,525
28	\$11,629,000 @ \$23,977	\$10,000,940 @ \$20,620
29	\$11,684,000 @ \$24,091	\$10,048,240 @ \$20,718
30	\$11,739,000 @ \$24,204	\$10,095,540 @ \$20,816

以上的物業資料只供參考，此處之發展商最新公布為準，如有任何資料錯誤，本行概不承擔任何責任。
紅色為最高售價、最高平均折實價，藍色為最低售價、最低平均折實價

