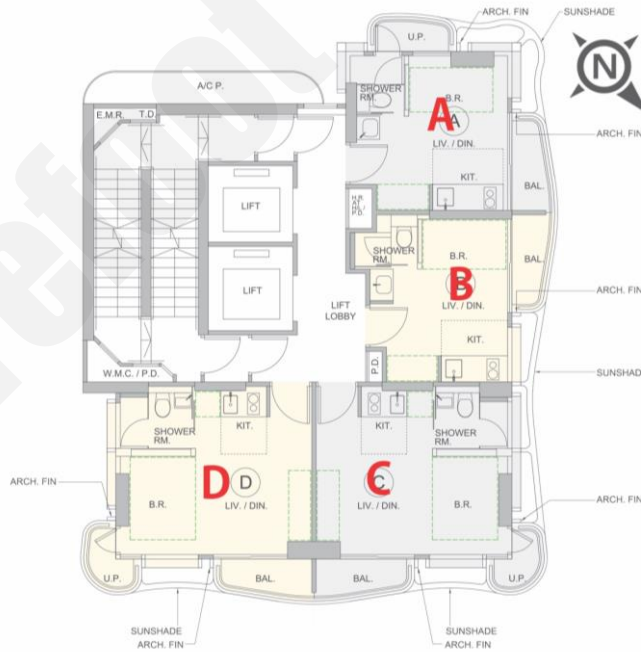


新盤價單表

Upper Central

價單1號

以最高12%折扣計算  
制作日期: 2024-09-20



A: 開放式 175'/193'/194'		
樓層	訂價	折實價12%
6	\$5,118,000 @\$26,381	\$4,503,840 @\$23,216
8	\$5,243,000 @\$27,026	\$4,613,840 @\$23,783
9	\$5,268,000 @\$27,155	\$4,635,840 @\$23,896
16	\$5,530,000 @\$28,505	\$4,866,400 @\$25,085
19	\$5,692,000 @\$29,340	\$5,008,960 @\$25,819
22	\$5,857,000 @\$30,191	\$5,154,160 @\$26,568
29	\$6,567,000 @\$34,026	\$5,778,960 @\$29,943
30	\$6,008,000 @\$34,331	\$5,287,040 @\$30,212
E: 2房 388'		
樓層	訂價	折實價12%
27	\$13,419,000 @\$34,585	\$11,808,720 @\$30,436

D: 開放式 208'/242'		
樓層	訂價	折實價12%
6	\$6,222,000 @\$29,913	\$5,475,360 @\$26,324
7	\$6,326,000 @\$26,140	\$5,566,880 @\$23,004
10	\$6,511,000 @\$26,905	\$5,729,680 @\$23,676
15	\$6,703,000 @\$27,698	\$5,898,640 @\$24,375
21	\$7,101,000 @\$29,343	\$6,248,880 @\$25,822
26	\$7,865,000 @\$32,500	\$6,921,200 @\$28,600
27	\$7,936,000 @\$32,793	\$6,983,680 @\$28,858

C: 開放式 239'		
樓層	訂價	折實價12%
9	\$6,369,000 @\$26,649	\$5,604,720 @\$23,451
19	\$6,880,000 @\$28,787	\$6,054,400 @\$25,332
20	\$6,947,000 @\$29,067	\$6,113,360 @\$25,579
21	\$7,013,000 @\$29,343	\$6,171,440 @\$25,822
25	\$7,699,000 @\$32,213	\$6,775,120 @\$28,348

B: 開放式 155'/167'		
樓層	訂價	折實價12%
12	\$4,532,000 @\$27,138	\$3,988,160 @\$23,881
16	\$4,623,000 @\$27,683	\$4,068,240 @\$24,361
18	\$4,739,000 @\$28,377	\$4,170,320 @\$24,972
20	\$4,809,000 @\$28,796	\$4,231,920 @\$25,341
22	\$4,905,000 @\$29,371	\$4,316,400 @\$25,847
23	\$4,953,000 @\$29,659	\$4,358,640 @\$26,100
25	\$5,345,000 @\$32,006	\$4,703,600 @\$28,165
29	\$5,544,000 @\$33,198	\$4,878,720 @\$29,214
30	\$5,193,000 @\$33,503	\$4,569,840 @\$29,483

紅色為最高售價、最高平均呎價；藍色為最低售價、最低平均呎價  
以上的物業資料只供參考，一切以發展商最新公布為準，如有任何資料錯漏本網頁不會承擔任何責任。