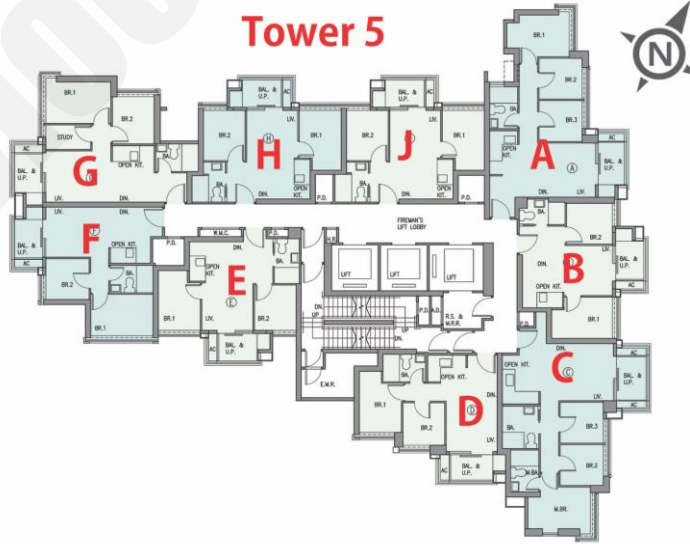


Tower 5



5座A: 3房 512'		
樓層	訂價	折實價18%
2	\$11,685,000 @\$22,822	\$9,581,700 @\$18,714
3	\$11,743,000 @\$22,936	\$9,629,260 @\$18,807
5	\$11,802,000 @\$23,051	\$9,677,640 @\$18,902
6	\$11,860,000 @\$23,164	\$9,725,200 @\$18,995
7	\$11,921,000 @\$23,283	\$9,775,220 @\$19,092
8	\$11,980,000 @\$23,398	\$9,823,600 @\$19,187
9	\$12,040,000 @\$23,516	\$9,872,800 @\$19,283
10	\$12,125,000 @\$23,682	\$9,942,500 @\$19,419
11	\$12,209,000 @\$23,846	\$10,011,380 @\$19,553
12	\$12,295,000 @\$24,014	\$10,081,900 @\$19,691

5座B: 2房 374'		
樓層	訂價	折實價18%
2	\$8,715,000 @\$23,302	\$7,146,300 @\$19,108
3	\$8,759,000 @\$23,420	\$7,182,380 @\$19,204
5	\$8,803,000 @\$23,537	\$7,218,460 @\$19,301
6	\$8,847,000 @\$23,655	\$7,254,540 @\$19,397
7	\$8,891,000 @\$23,773	\$7,290,620 @\$19,494
8	\$8,935,000 @\$23,890	\$7,326,700 @\$19,590
9	\$8,981,000 @\$24,013	\$7,364,420 @\$19,691
10	\$9,043,000 @\$24,179	\$7,415,260 @\$19,827
11	\$9,107,000 @\$24,350	\$7,467,740 @\$19,967

5座C: 3房 560'		
樓層	訂價	折實價18%
2	\$13,004,000 @\$23,221	\$10,663,280 @\$19,042
3	\$13,070,000 @\$23,339	\$10,717,400 @\$19,138
5	\$13,135,000 @\$23,455	\$10,770,700 @\$19,233
6	\$13,202,000 @\$23,575	\$10,825,640 @\$19,332
7	\$13,267,000 @\$23,691	\$10,878,940 @\$19,427

5座D: 2房 392'		
樓層	訂價	折實價18%
2	\$7,748,000 @\$19,765	\$6,353,360 @\$16,208
3	\$7,771,000 @\$19,824	\$6,372,220 @\$16,256
5	\$7,795,000 @\$19,885	\$6,391,900 @\$16,306
6	\$7,818,000 @\$19,944	\$6,410,760 @\$16,354
7	\$7,841,000 @\$20,003	\$6,429,620 @\$16,402
8	\$7,864,000 @\$20,061	\$6,448,480 @\$16,450
9	\$7,889,000 @\$20,125	\$6,468,980 @\$16,503
10	\$8,125,000 @\$20,727	\$6,662,500 @\$16,996
11	\$8,289,000 @\$21,145	\$6,796,980 @\$17,339
12	\$8,412,000 @\$21,459	\$6,897,840 @\$17,597
15	\$8,437,000 @\$21,523	\$6,918,340 @\$17,649

5座E: 2房 353'/391'		
樓層	訂價	折實價18%
2	\$7,303,000 @\$20,688	\$5,988,460 @\$16,964
3	\$7,768,000 @\$19,867	\$6,369,760 @\$16,291
5	\$7,791,000 @\$19,926	\$6,388,620 @\$16,339
6	\$7,814,000 @\$19,985	\$6,407,480 @\$16,387
7	\$7,837,000 @\$20,043	\$6,426,340 @\$16,436
8	\$7,860,000 @\$20,102	\$6,445,200 @\$16,484
9	\$7,885,000 @\$20,166	\$6,465,700 @\$16,536
10	\$8,003,000 @\$20,468	\$6,562,460 @\$16,784
11	\$8,084,000 @\$20,675	\$6,628,880 @\$16,954
12	\$8,246,000 @\$21,090	\$6,761,720 @\$17,293
15	\$8,270,000 @\$21,151	\$6,781,400 @\$17,344
16	\$8,295,000 @\$21,215	\$6,801,900 @\$17,396
17	\$8,319,000 @\$21,276	\$6,821,580 @\$17,446
18	\$8,345,000 @\$21,343	\$6,842,900 @\$17,501
19	\$8,369,000 @\$21,404	\$6,862,580 @\$17,551
20	\$8,393,000 @\$21,465	\$6,882,260 @\$17,602
21	\$8,419,000 @\$21,532	\$6,903,580 @\$17,656
22	\$8,446,000 @\$21,601	\$6,925,720 @\$17,713
23	\$8,470,000 @\$21,662	\$6,945,400 @\$17,763

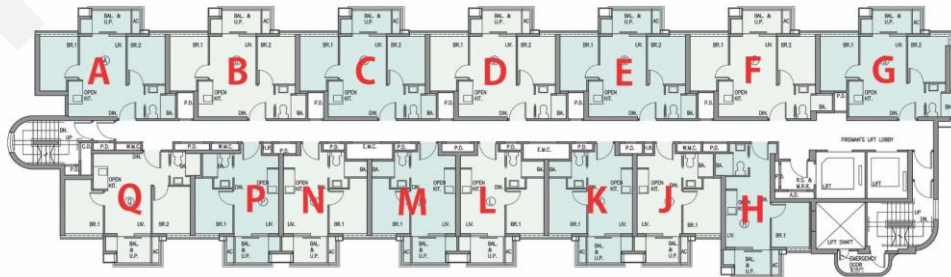
5座F: 2房 400'		
樓層	訂價	折實價18%
2	\$7,809,000 @\$19,523	\$6,403,380 @\$16,008
3	\$7,889,000 @\$19,723	\$6,468,980 @\$16,172
5	\$7,913,000 @\$19,783	\$6,488,660 @\$16,222
6	\$7,936,000 @\$19,840	\$6,507,520 @\$16,269
7	\$7,959,000 @\$19,898	\$6,526,380 @\$16,316
8	\$7,984,000 @\$19,960	\$6,546,880 @\$16,367
9	\$8,007,000 @\$20,018	\$6,565,740 @\$16,414
10	\$8,031,000 @\$20,078	\$6,585,420 @\$16,464
11	\$8,054,000 @\$20,135	\$6,604,280 @\$16,511
12	\$8,080,000 @\$20,200	\$6,625,600 @\$16,564
15	\$8,104,000 @\$20,260	\$6,645,280 @\$16,613
16	\$8,129,000 @\$20,323	\$6,665,780 @\$16,664
17	\$8,153,000 @\$20,383	\$6,685,460 @\$16,714
18	\$8,178,000 @\$20,445	\$6,705,960 @\$16,765
19	\$8,202,000 @\$20,505	\$6,725,640 @\$16,814
20	\$8,226,000 @\$20,565	\$6,745,320 @\$16,863
21	\$8,252,000 @\$20,630	\$6,766,640 @\$16,917
22	\$8,276,000 @\$20,690	\$6,786,320 @\$16,966
23	\$8,301,000 @\$20,753	\$6,806,820 @\$17,017
25	\$8,325,000 @\$20,813	\$6,826,500 @\$17,066
26	\$8,351,000 @\$20,878	\$6,847,820 @\$17,120
27	\$8,375,000 @\$20,938	\$6,867,500 @\$17,169
28	\$8,401,000 @\$21,003	\$6,888,820 @\$17,222

5座G: 2房 469'		
樓層	訂價	折實價18%
2	\$9,298,000 @\$19,825	\$7,624,360 @\$16,257
3	\$9,321,000 @\$19,874	\$7,643,220 @\$16,297
5	\$9,346,000 @\$19,928	\$7,663,720 @\$16,341
6	\$9,369,000 @\$19,977	\$7,682,580 @\$16,381
7	\$9,392,000 @\$20,026	\$7,701,440 @\$16,421
8	\$9,415,000 @\$20,075	\$7,720,300 @\$16,461
9	\$9,439,000 @\$20,126	\$7,739,980 @\$16,503
10	\$9,463,000 @\$20,177	\$7,759,660 @\$16,545
11	\$9,486,000 @\$20,226	\$7,778,520 @\$16,585
12	\$9,509,000 @\$20,275	\$7,797,380 @\$16,626
15	\$9,535,000 @\$20,330	\$7,818,700 @\$16,671
16	\$9,558,000 @\$20,380	\$7,837,560 @\$16,711
17	\$9,582,000 @\$20,431	\$7,857,240 @\$16,753
18	\$9,606,000 @\$20,482	\$7,876,920 @\$16,795

5座H: 2房 385'		
樓層	訂價	折實價18%
2	\$7,912,000 @\$20,551	\$6,487,840 @\$16,852
3	\$7,951,000 @\$20,652	\$6,519,820 @\$16,935
5	\$7,991,000 @\$20,756	\$6,552,620 @\$17,020
6	\$8,030,000 @\$20,857	\$6,584,600 @\$17,103
7	\$8,191,000 @\$21,275	\$6,716,620 @\$17,446
8	\$8,356,000 @\$21,704	\$6,851,920 @\$17,797
9	\$8,481,000 @\$22,029	\$6,954,420 @\$18,063



Tower 6



6座B : 2房 380'		
樓層	訂價	折實價18%
2	\$8,918,000 @\$23,468	\$7,312,760 @\$19,244
3	\$8,962,000 @\$23,584	\$7,348,840 @\$19,339
5	\$9,008,000 @\$23,705	\$7,386,560 @\$19,438
6	\$9,052,000 @\$23,821	\$7,422,640 @\$19,533
7	\$9,234,000 @\$24,300	\$7,571,880 @\$19,926

6座C : 2房 380'		
樓層	訂價	折實價18%
2	\$8,934,000 @\$23,511	\$7,325,880 @\$19,279
3	\$8,979,000 @\$23,629	\$7,362,780 @\$19,376
5	\$9,024,000 @\$23,747	\$7,399,680 @\$19,473
6	\$9,068,000 @\$23,863	\$7,435,760 @\$19,568
7	\$9,250,000 @\$24,342	\$7,585,000 @\$19,961

6座J : 1房 234'/272'		
樓層	訂價	折實價18%
2	\$4,713,000 @\$20,141	\$3,864,660 @\$16,516
3	\$5,353,000 @\$19,680	\$4,389,460 @\$16,138
5	\$5,380,000 @\$19,779	\$4,411,600 @\$16,219
6	\$5,407,000 @\$19,879	\$4,433,740 @\$16,301
7	\$5,515,000 @\$20,276	\$4,522,300 @\$16,626

6座K : 1房 238'/276'		
樓層	訂價	折實價18%
2	\$4,824,000 @\$20,269	\$3,955,680 @\$16,621
3	\$5,431,000 @\$19,678	\$4,453,420 @\$16,136
5	\$5,458,000 @\$19,775	\$4,475,560 @\$16,216
6	\$5,486,000 @\$19,877	\$4,498,520 @\$16,299
7	\$5,596,000 @\$20,275	\$4,588,720 @\$16,626

6座L : 1房 239'/276'		
樓層	訂價	折實價18%
2	\$4,836,000 @\$20,234	\$3,965,520 @\$16,592
3	\$5,431,000 @\$19,678	\$4,453,420 @\$16,136
5	\$5,458,000 @\$19,775	\$4,475,560 @\$16,216
6	\$5,486,000 @\$19,877	\$4,498,520 @\$16,299
7	\$5,596,000 @\$20,275	\$4,588,720 @\$16,626

6座P : 1房 236'/274'		
樓層	訂價	折實價18%
2	\$4,775,000 @\$20,233	\$3,915,500 @\$16,591
3	\$5,392,000 @\$19,679	\$4,421,440 @\$16,137
5	\$5,419,000 @\$19,777	\$4,443,580 @\$16,217
6	\$5,446,000 @\$19,876	\$4,465,720 @\$16,298
7	\$5,556,000 @\$20,277	\$4,555,920 @\$16,627

6座M : 1房 239'/276'		
樓層	訂價	折實價18%
2	\$4,836,000 @\$20,234	\$3,965,520 @\$16,592
3	\$5,431,000 @\$19,678	\$4,453,420 @\$16,136
5	\$5,458,000 @\$19,775	\$4,475,560 @\$16,216
6	\$5,486,000 @\$19,877	\$4,498,520 @\$16,299
7	\$5,596,000 @\$20,275	\$4,588,720 @\$16,626

6座Q : 2房 382'		
樓層	訂價	折實價18%
3	\$7,519,000 @\$19,683	\$6,165,580 @\$16,140
5	\$7,557,000 @\$19,783	\$6,196,740 @\$16,222
6	\$7,593,000 @\$19,877	\$6,226,260 @\$16,299
7	\$7,746,000 @\$20,277	\$6,351,720 @\$16,628

6座N : 1房 23	
樓層	訂價
2	\$4,824,000 @\$20,269
3	\$5,431,000 @\$19,678
5	\$5,458,000 @\$19,775
6	\$5,486,000 @\$19,877
7	\$5,596,000 @\$20,275