

新盤價單表

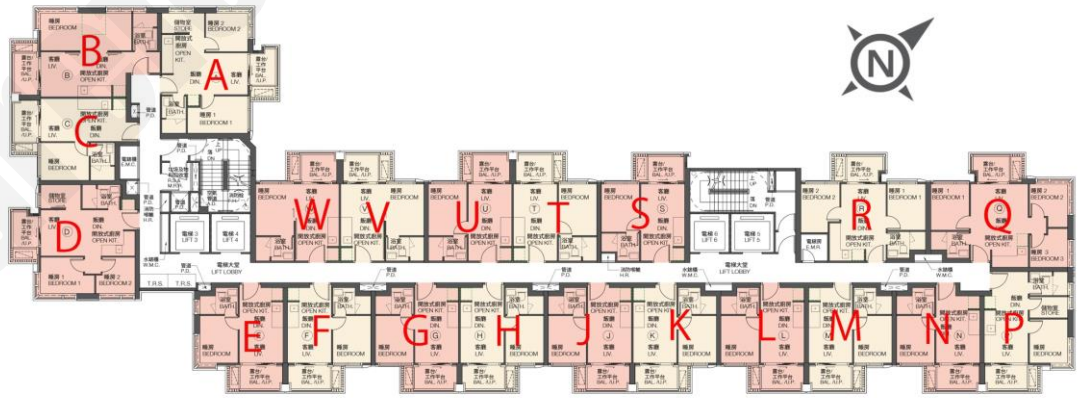
The Haddon



價單1號

以最高10%折扣計算

制作日期: 2024-05-31



B: 1房 369'		
樓層	訂價	折實價10%
6	\$8,081,000 @\$21,900	\$7,272,900 @\$19,710
7	\$8,131,000 @\$22,035	\$7,317,900 @\$19,832
8	\$8,180,000 @\$22,168	\$7,362,000 @\$19,951
9	\$8,180,000 @\$22,168	\$7,362,000 @\$19,951
10	\$8,205,000 @\$22,236	\$7,384,500 @\$20,012
11	\$8,230,000 @\$22,304	\$7,407,000 @\$20,073
12	\$8,255,000 @\$22,371	\$7,429,500 @\$20,134
15	\$8,280,000 @\$22,439	\$7,452,000 @\$20,195
D: 2房 411'		
樓層	訂價	折實價10%
6	\$8,793,000 @\$21,394	\$7,913,700 @\$19,255
16	\$9,063,000 @\$22,051	\$8,156,700 @\$19,846
17	\$9,144,000 @\$22,248	\$8,229,600 @\$20,023
25	\$9,360,000 @\$22,774	\$8,424,000 @\$20,496
26	\$9,414,000 @\$22,905	\$8,472,600 @\$20,615
Q: 3房 430'		
樓層	訂價	折實價10%
6	\$9,053,000 @\$21,053	\$8,147,700 @\$18,948
16	\$9,194,000 @\$21,381	\$8,274,600 @\$19,243
17	\$9,222,000 @\$21,447	\$8,299,800 @\$19,302
25	\$9,418,000 @\$21,902	\$8,476,200 @\$19,712
26	\$9,474,000 @\$22,033	\$8,526,600 @\$19,829
R: 2房 346'		
樓層	訂價	折實價10%
6	\$7,174,000 @\$20,734	\$6,456,600 @\$18,661
7	\$7,195,000 @\$20,795	\$6,475,500 @\$18,715
8	\$7,217,000 @\$20,858	\$6,495,300 @\$18,773
15	\$7,303,000 @\$21,107	\$6,572,700 @\$18,996
16	\$7,325,000 @\$21,171	\$6,592,500 @\$19,053
17	\$7,346,000 @\$21,231	\$6,611,400 @\$19,108
18	\$7,368,000 @\$21,295	\$6,631,200 @\$19,165
23	\$7,476,000 @\$21,607	\$6,728,400 @\$19,446
25	\$7,497,000 @\$21,668	\$6,747,300 @\$19,501
26	\$7,519,000 @\$21,731	\$6,767,100 @\$19,558
V: 1房 262'		
樓層	訂價	折實價10%
6	\$5,440,000 @\$20,763	\$4,896,000 @\$18,687
7	\$5,457,000 @\$20,828	\$4,911,300 @\$18,745
8	\$5,474,000 @\$20,893	\$4,926,600 @\$18,804
9	\$5,474,000 @\$20,893	\$4,926,600 @\$18,804
10	\$5,491,000 @\$20,958	\$4,941,900 @\$18,862
11	\$5,509,000 @\$21,027	\$4,958,100 @\$18,924
12	\$5,526,000 @\$21,092	\$4,973,400 @\$18,982
15	\$5,560,000 @\$21,221	\$5,004,000 @\$19,099
16	\$5,595,000 @\$21,355	\$5,035,500 @\$19,219
17	\$5,629,000 @\$21,485	\$5,066,100 @\$19,336

E: 1房 276'		
樓層	訂價	折實價10%
6	\$5,812,000 @\$21,058	\$5,230,800 @\$18,952
7	\$5,849,000 @\$21,192	\$5,264,100 @\$19,073
8	\$5,867,000 @\$21,257	\$5,280,300 @\$19,132
9	\$5,867,000 @\$21,257	\$5,280,300 @\$19,132
10	\$5,885,000 @\$21,322	\$5,296,500 @\$19,190
11	\$5,904,000 @\$21,391	\$5,313,600 @\$19,252
12	\$5,922,000 @\$21,457	\$5,329,800 @\$19,311
15	\$5,940,000 @\$21,522	\$5,346,000 @\$19,370
16	\$5,959,000 @\$21,591	\$5,363,100 @\$19,432
17	\$5,977,000 @\$21,656	\$5,379,300 @\$19,490
18	\$5,995,000 @\$21,721	\$5,395,500 @\$19,549
19	\$6,014,000 @\$21,790	\$5,412,600 @\$19,611
20	\$6,032,000 @\$21,855	\$5,428,800 @\$19,670
22	\$6,069,000 @\$21,989	\$5,462,100 @\$19,790
23	\$6,087,000 @\$22,054	\$5,478,300 @\$19,849
25	\$6,105,000 @\$22,120	\$5,494,500 @\$19,908
26	\$6,124,000 @\$22,188	\$5,511,600 @\$19,970
27	\$6,142,000 @\$22,254	\$5,527,800 @\$20,028

J: 1房 262'		
樓層	訂價	折實價10%
6	\$5,347,000 @\$20,408	\$4,812,300 @\$18,368
7	\$5,367,000 @\$20,485	\$4,830,300 @\$18,436
8	\$5,383,000 @\$20,546	\$4,844,700 @\$18,491
9	\$5,383,000 @\$20,546	\$4,844,700 @\$18,491
10	\$5,400,000 @\$20,611	\$4,860,000 @\$18,550
11	\$5,416,000 @\$20,672	\$4,874,400 @\$18,605
12	\$5,432,000 @\$20,733	\$4,888,800 @\$18,660
15	\$5,448,000 @\$20,794	\$4,903,200 @\$18,715
16	\$5,464,000 @\$20,855	\$4,917,600 @\$18,769
17	\$5,481,000 @\$20,920	\$4,932,900 @\$18,828
18	\$5,497,000 @\$20,981	\$4,947,300 @\$18,883
19	\$5,513,000 @\$21,042	\$4,961,700 @\$18,938
20	\$5,529,000 @\$21,103	\$4,976,100 @\$18,993
22	\$5,562,000 @\$21,229	\$5,005,800 @\$19,106
23	\$5,578,000 @\$21,290	\$5,020,200 @\$19,161
25	\$5,594,000 @\$21,351	\$5,034,600 @\$19,216
26	\$5,610,000 @\$21,412	\$5,049,000 @\$19,271
27	\$5,626,000 @\$21,473	\$5,063,400 @\$19,326

K: 1房 262'		
樓層	訂價	折實價10%
6	\$5,390,000 @\$20,573	\$4,851,000 @\$18,515
7	\$5,422,000 @\$20,695	\$4,879,800 @\$18,625
8	\$5,438,000 @\$20,756	\$4,894,200 @\$18,680
9	\$5,438,000 @\$20,756	\$4,894,200 @\$18,680
10	\$5,455,000 @\$20,821	\$4,909,500 @\$18,739
11	\$5,471,000 @\$20,882	\$4,923,900 @\$18,794
12	\$5,487,000 @\$20,943	\$4,938,300 @\$18,848
15	\$5,503,000 @\$21,004	\$4,952,700 @\$18,903
16	\$5,519,000 @\$21,065	\$4,967,100 @\$18,958
17	\$5,536,000 @\$21,130	\$4,982,400 @\$19,017
18	\$5,552,000 @\$21,191	\$4,996,800 @\$19,072
19	\$5,568,000 @\$21,252	\$5,011,200 @\$19,127
20	\$5,584,000 @\$21,313	\$5,025,600 @\$19,182
22	\$5,617,000 @\$21,439	\$5,055,300 @\$19,295
23	\$5,633,000 @\$21,500	\$5,069,700 @\$19,350
25	\$5,649,000 @\$21,561	\$5,084,100 @\$19,405
26	\$5,665,000 @\$21,622	\$5,098,500 @\$19,460
27	\$5,681,000 @\$21,683	\$5,112,900 @\$19,515

以上的物業資料只供參考，一切以發展商最新公布為準，如有任何資料錯漏本網頁不會承擔任何責任。
紅色為最高售價、最高平均呎價；藍色為最低售價、最低平均呎價