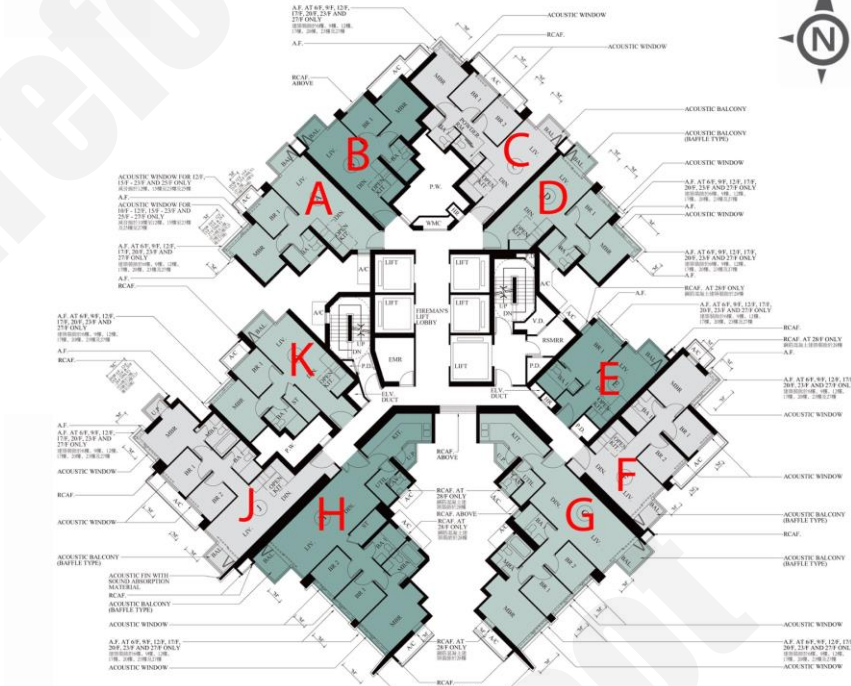


TOWER 8



G : 3房連套房 853'/855'		
樓層	訂價	折實價15.5%
3	\$13,263,000 @ \$15,512	\$11,207,235 @ \$13,108
6	\$13,475,000 @ \$15,760	\$11,386,375 @ \$13,317
8	\$13,624,000 @ \$15,935	\$11,512,280 @ \$13,465
9	\$13,624,000 @ \$15,935	\$11,512,280 @ \$13,465
12	\$13,736,000 @ \$16,065	\$11,606,920 @ \$13,575
15	\$13,775,000 @ \$16,111	\$11,639,875 @ \$13,614
16	\$13,813,000 @ \$16,156	\$11,671,985 @ \$13,651
17	\$13,851,000 @ \$16,200	\$11,704,095 @ \$13,689
18	\$13,928,000 @ \$16,290	\$11,769,160 @ \$13,765
19	\$13,928,000 @ \$16,290	\$11,769,160 @ \$13,765
20	\$13,966,000 @ \$16,335	\$11,801,270 @ \$13,803
21	\$14,005,000 @ \$16,380	\$11,834,225 @ \$13,841
22	\$14,044,000 @ \$16,426	\$11,867,180 @ \$13,880
23	\$14,082,000 @ \$16,470	\$11,899,290 @ \$13,917
25	\$14,121,000 @ \$16,516	\$11,932,245 @ \$13,956
26	\$14,160,000 @ \$16,561	\$11,965,200 @ \$13,994
27	\$14,198,000 @ \$16,606	\$11,997,310 @ \$14,032
28	\$14,238,000 @ \$16,653	\$12,031,110 @ \$14,071
30	\$14,271,000 @ \$16,730	\$12,058,995 @ \$14,137
31	\$14,307,000 @ \$16,773	\$12,089,415 @ \$14,173
32	\$14,342,000 @ \$16,814	\$12,118,990 @ \$14,207
33	\$14,379,000 @ \$16,857	\$12,150,255 @ \$14,244
35	\$14,414,000 @ \$16,898	\$12,179,830 @ \$14,279
36	\$14,450,000 @ \$16,940	\$12,210,250 @ \$14,314
37	\$14,486,000 @ \$16,982	\$12,240,670 @ \$14,350
38	\$14,559,000 @ \$17,068	\$12,302,355 @ \$14,422
39	\$14,559,000 @ \$17,068	\$12,302,355 @ \$14,422
40	\$14,594,000 @ \$17,109	\$12,331,930 @ \$14,457
41	\$14,632,000 @ \$17,154	\$12,364,040 @ \$14,495
42	\$14,669,000 @ \$17,197	\$12,395,305 @ \$14,531
43	\$14,705,000 @ \$17,239	\$12,425,725 @ \$14,567
45	\$14,741,000 @ \$17,281	\$12,456,145 @ \$14,603
46	\$14,779,000 @ \$17,326	\$12,488,255 @ \$14,640



D : 2房 467'		
樓層	訂價	折實價15.5%
3	\$8,082,000 @ \$17,306	\$6,829,290 @ \$14,624
7	\$8,118,000 @ \$17,383	\$6,859,710 @ \$14,689
8	\$8,128,000 @ \$17,405	\$6,868,160 @ \$14,707
9	\$8,128,000 @ \$17,405	\$6,868,160 @ \$14,707
11	\$8,143,000 @ \$17,437	\$6,880,835 @ \$14,734
12	\$8,147,000 @ \$17,445	\$6,884,215 @ \$14,741
15	\$8,153,000 @ \$17,458	\$6,889,285 @ \$14,752
16	\$8,157,000 @ \$17,467	\$6,892,665 @ \$14,759
17	\$8,162,000 @ \$17,478	\$6,896,890 @ \$14,769
18	\$8,174,000 @ \$17,503	\$6,907,030 @ \$14,790
19	\$8,174,000 @ \$17,503	\$6,907,030 @ \$14,790
20	\$8,182,000 @ \$17,520	\$6,913,790 @ \$14,805
21	\$8,189,000 @ \$17,535	\$6,919,705 @ \$14,817
22	\$8,200,000 @ \$17,559	\$6,929,000 @ \$14,837
23	\$8,208,000 @ \$17,576	\$6,935,760 @ \$14,852
25	\$8,219,000 @ \$17,600	\$6,945,055 @ \$14,872
26	\$8,230,000 @ \$17,623	\$6,954,350 @ \$14,892
27	\$8,239,000 @ \$17,642	\$6,961,955 @ \$14,908
28	\$8,249,000 @ \$17,664	\$6,970,405 @ \$14,926

A : 2房 468'		
樓層	訂價	折實價15.5%
3	\$8,144,000 @ \$17,402	\$6,881,680 @ \$14,704
7	\$8,217,000 @ \$17,558	\$6,943,365 @ \$14,836
8	\$8,234,000 @ \$17,594	\$6,957,730 @ \$14,867
9	\$8,234,000 @ \$17,594	\$6,957,730 @ \$14,867
11	\$8,262,000 @ \$17,654	\$6,981,390 @ \$14,918
12	\$8,272,000 @ \$17,675	\$6,989,840 @ \$14,936
15	\$8,282,000 @ \$17,697	\$6,998,290 @ \$14,954
16	\$8,290,000 @ \$17,714	\$7,005,050 @ \$14,968
17	\$8,299,000 @ \$17,733	\$7,012,655 @ \$14,984
18	\$8,323,000 @ \$17,784	\$7,032,935 @ \$15,028
19	\$8,323,000 @ \$17,784	\$7,032,935 @ \$15,028
20	\$8,337,000 @ \$17,814	\$7,044,765 @ \$15,053
21	\$8,350,000 @ \$17,842	\$7,055,750 @ \$15,076
22	\$8,370,000 @ \$17,885	\$7,072,650 @ \$15,113
23	\$8,388,000 @ \$17,923	\$7,087,860 @ \$15,145
25	\$8,407,000 @ \$17,964	\$7,103,915 @ \$15,179
26	\$8,426,000 @ \$18,004	\$7,119,970 @ \$15,214
27	\$8,445,000 @ \$18,045	\$7,136,025 @ \$15,248
28	\$8,464,000 @ \$18,085	\$7,152,080 @ \$15,282

C : 3房 537'		
樓層	訂價	折實價15.5%
3	\$9,202,000 @ \$17,136	\$7,775,690 @ \$14,480
7	\$9,346,000 @ \$17,404	\$7,897,370 @ \$14,706
8	\$9,383,000 @ \$17,473	\$7,928,635 @ \$14,765
9	\$9,383,000 @ \$17,473	\$7,928,635 @ \$14,765
11	\$9,421,000 @ \$17,544	\$7,960,745 @ \$14,824
12	\$9,440,000 @ \$17,579	\$7,976,800 @ \$14,854
15	\$9,459,000 @ \$17,615	\$7,992,855 @ \$14,884
16	\$9,477,000 @ \$17,648	\$8,008,065 @ \$14,913
17	\$9,497,000 @ \$17,685	\$8,024,965 @ \$14,944
18	\$9,535,000 @ \$17,756	\$8,057,075 @ \$15,004
19	\$9,535,000 @ \$17,756	\$8,057,075 @ \$15,004
20	\$9,555,000 @ \$17,793	\$8,073,975 @ \$15,035
21	\$9,573,000 @ \$17,827	\$8,089,185 @ \$15,064
22	\$9,592,000 @ \$17,862	\$8,105,240 @ \$15,094
23	\$9,612,000 @ \$17,899	\$8,122,140 @ \$15,125
25	\$9,631,000 @ \$17,935	\$8,138,195 @ \$15,155
26	\$9,650,000 @ \$17,970	\$8,154,250 @ \$15,185
27	\$9,670,000 @ \$18,007	\$8,171,150 @ \$15,216
28	\$9,689,000 @ \$18,043	\$8,187,205 @ \$15,246

新盤價單表

The YOHO Hub II

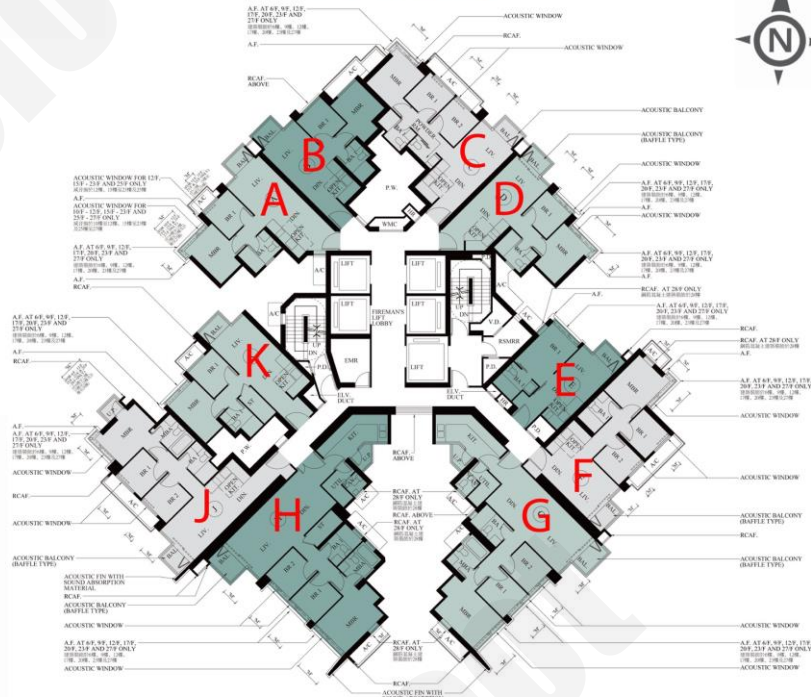
價單1號

以最高15.5%折扣計算

制作日期: 2024-05-02



TOWER 8



H : 3房連套房 901'/905'		
樓層	訂價	折實價15.5%
3	\$13,932,000 @ \$15,394	\$11,772,540 @ \$13,008
6	\$14,117,000 @ \$15,599	\$11,928,865 @ \$13,181
8	\$14,262,000 @ \$15,759	\$12,051,390 @ \$13,316
9	\$14,262,000 @ \$15,759	\$12,051,390 @ \$13,316
12	\$14,372,000 @ \$15,881	\$12,144,340 @ \$13,419
16	\$14,446,000 @ \$15,962	\$12,206,870 @ \$13,488
17	\$14,482,000 @ \$16,002	\$12,237,290 @ \$13,522
18	\$14,556,000 @ \$16,084	\$12,299,820 @ \$13,591
19	\$14,556,000 @ \$16,084	\$12,299,820 @ \$13,591
20	\$14,594,000 @ \$16,126	\$12,331,930 @ \$13,626
21	\$14,631,000 @ \$16,167	\$12,363,195 @ \$13,661
22	\$14,669,000 @ \$16,209	\$12,395,305 @ \$13,696
23	\$14,707,000 @ \$16,251	\$12,427,415 @ \$13,732
25	\$14,743,000 @ \$16,291	\$12,457,835 @ \$13,766
26	\$14,781,000 @ \$16,333	\$12,489,945 @ \$13,801
27	\$14,819,000 @ \$16,375	\$12,522,055 @ \$13,837
28	\$14,857,000 @ \$16,417	\$12,554,165 @ \$13,872
30	\$14,854,000 @ \$16,486	\$12,551,630 @ \$13,931
31	\$14,892,000 @ \$16,528	\$12,583,740 @ \$13,966
32	\$14,930,000 @ \$16,570	\$12,615,850 @ \$14,002
33	\$14,968,000 @ \$16,613	\$12,647,960 @ \$14,038
35	\$15,005,000 @ \$16,654	\$12,679,225 @ \$14,072
36	\$15,043,000 @ \$16,696	\$12,711,335 @ \$14,108
37	\$15,080,000 @ \$16,737	\$12,742,600 @ \$14,143
38	\$15,155,000 @ \$16,820	\$12,805,975 @ \$14,213
39	\$15,155,000 @ \$16,820	\$12,805,975 @ \$14,213
40	\$15,193,000 @ \$16,862	\$12,838,085 @ \$14,249
41	\$15,231,000 @ \$16,905	\$12,870,195 @ \$14,284
42	\$15,269,000 @ \$16,947	\$12,902,305 @ \$14,320
43	\$15,308,000 @ \$16,990	\$12,935,260 @ \$14,357
45	\$15,346,000 @ \$17,032	\$12,967,370 @ \$14,392
46	\$15,383,000 @ \$17,073	\$12,998,635 @ \$14,427
J : 3房連套房 639'/643'		
樓層	訂價	折實價15.5%
3	\$10,181,000 @ \$15,834	\$8,602,945 @ \$13,379
6	\$10,314,000 @ \$16,040	\$8,715,330 @ \$13,554
8	\$10,407,000 @ \$16,185	\$8,793,915 @ \$13,676
9	\$10,407,000 @ \$16,185	\$8,793,915 @ \$13,676
12	\$10,478,000 @ \$16,295	\$8,853,910 @ \$13,770
15	\$10,502,000 @ \$16,333	\$8,874,190 @ \$13,801
16	\$10,525,000 @ \$16,369	\$8,893,625 @ \$13,831
17	\$10,549,000 @ \$16,406	\$8,913,905 @ \$13,863
18	\$10,598,000 @ \$16,482	\$8,955,310 @ \$13,927
19	\$10,598,000 @ \$16,482	\$8,955,310 @ \$13,927
20	\$10,621,000 @ \$16,518	\$8,974,745 @ \$13,958
21	\$10,645,000 @ \$16,555	\$8,995,025 @ \$13,989
22	\$10,669,000 @ \$16,593	\$9,015,305 @ \$14,021
23	\$10,692,000 @ \$16,628	\$9,034,740 @ \$14,051

J : 3房連套房 639'/643'		
樓層	訂價	折實價15.5%
27	\$10,766,000 @ \$16,743	\$9,097,270 @ \$14,148
28	\$10,789,000 @ \$16,779	\$9,116,705 @ \$14,178
30	\$10,806,000 @ \$16,911	\$9,131,070 @ \$14,290
31	\$10,819,000 @ \$16,931	\$9,142,055 @ \$14,307
32	\$10,832,000 @ \$16,951	\$9,153,040 @ \$14,324
33	\$10,844,000 @ \$16,970	\$9,163,180 @ \$14,340
35	\$10,871,000 @ \$17,013	\$9,185,995 @ \$14,376
36	\$10,898,000 @ \$17,055	\$9,208,810 @ \$14,411
37	\$10,925,000 @ \$17,097	\$9,231,625 @ \$14,447
38	\$10,980,000 @ \$17,183	\$9,278,100 @ \$14,520
39	\$10,980,000 @ \$17,183	\$9,278,100 @ \$14,520
40	\$11,007,000 @ \$17,225	\$9,300,915 @ \$14,555
41	\$11,037,000 @ \$17,272	\$9,326,265 @ \$14,595
42	\$11,064,000 @ \$17,315	\$9,349,080 @ \$14,631
43	\$11,091,000 @ \$17,357	\$9,371,895 @ \$14,667
45	\$11,120,000 @ \$17,402	\$9,396,400 @ \$14,705
46	\$11,147,000 @ \$17,444	\$9,419,215 @ \$14,741

K : 2房 490'/493'		
樓層	訂價	折實價15.5%
3	\$8,361,000 @ \$16,959	\$7,065,045 @ \$14,331
5	\$8,426,000 @ \$17,091	\$7,119,970 @ \$14,442
6	\$8,460,000 @ \$17,160	\$7,148,700 @ \$14,500
7	\$8,495,000 @ \$17,231	\$7,178,275 @ \$14,560
8	\$8,530,000 @ \$17,302	\$7,207,850 @ \$14,620
9	\$8,530,000 @ \$17,302	\$7,207,850 @ \$14,620
10	\$8,548,000 @ \$17,339	\$7,223,060 @ \$14,651
11	\$8,566,000 @ \$17,375	\$7,238,270 @ \$14,682
12	\$8,582,000 @ \$17,408	\$7,251,790 @ \$14,710
15	\$8,601,000 @ \$17,446	\$7,267,845 @ \$14,742
16	\$8,618,000 @ \$17,481	\$7,282,210 @ \$14,771
17	\$8,636,000 @ \$17,517	\$7,297,420 @ \$14,802
18	\$8,671,000 @ \$17,588	\$7,326,995 @ \$14,862
19	\$8,671,000 @ \$17,588	\$7,326,995 @ \$14,862
20	\$8,690,000 @ \$17,627	\$7,343,050 @ \$14,895
21	\$8,707,000 @ \$17,661	\$7,357,415 @ \$14,924
22	\$8,724,000 @ \$17,696	\$7,371,780 @ \$14,953

K : 2房 490'	
樓層	訂價
23	\$8,743,000 @ \$17,734
25	\$8,761,000 @ \$17,771
26	\$8,780,000 @ \$17,809
27	\$8,796,000 @ \$17,842
28	\$8,814,000 @ \$17,878
30	\$8,825,000 @ \$18,010
31	\$8,836,000 @ \$18,033
32	\$8,847,000 @ \$18,055
33	\$8,858,000 @ \$18,078
35	\$8,880,000 @ \$18,122
36	\$8,902,000 @ \$18,167
37	\$8,924,000 @ \$18,212
38	\$8,969,000 @ \$18,304
39	\$8,969,000 @ \$18,304
40	\$8,992,000 @ \$18,351
41	\$9,014,000 @ \$18,396

以上的物業資料只供參考，一切以發展商最新公布為準，如有任何資料錯漏本網頁不會承擔任何責任。