

新盤價單表

利奧坊·首隅

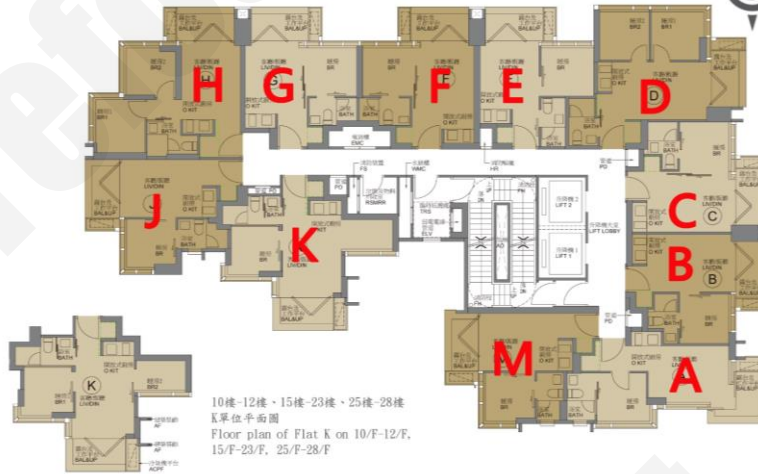
價單1號

以最高8%折扣計算

制作日期: 2024-03-18



比例 Scale: 1:500



A: 1房 285'		
樓層	訂價	折實價8%
6	\$5,519,000 @\$19,365	\$5,077,480 @\$17,816
7	\$5,618,000 @\$19,712	\$5,168,560 @\$18,135
8	\$5,682,000 @\$19,937	\$5,227,440 @\$18,342
9	\$5,718,000 @\$20,063	\$5,260,560 @\$18,458
10	\$5,753,000 @\$20,186	\$5,292,760 @\$18,571
11	\$5,836,000 @\$20,477	\$5,369,120 @\$18,839
12	\$5,890,000 @\$20,667	\$5,418,800 @\$19,013
15	\$5,957,000 @\$20,902	\$5,480,440 @\$19,230
26	\$6,631,000 @\$23,267	\$6,100,520 @\$21,405
27	\$6,687,000 @\$23,463	\$6,152,040 @\$21,586

D: 2房 353'		
樓層	訂價	折實價8%
6	\$6,534,000 @\$18,510	\$6,011,280 @\$17,029
7	\$6,644,000 @\$18,822	\$6,112,480 @\$17,316
8	\$6,798,000 @\$19,258	\$6,254,160 @\$17,717
9	\$6,864,000 @\$19,445	\$6,314,880 @\$17,889
23	\$7,746,000 @\$21,943	\$7,126,320 @\$20,188
25	\$7,882,000 @\$22,329	\$7,251,440 @\$20,542
26	\$7,971,000 @\$22,581	\$7,333,320 @\$20,774

E: 1房 252'		
樓層	訂價	折實價8%
6	\$4,754,000 @\$18,865	\$4,373,680 @\$17,356
7	\$4,835,000 @\$19,187	\$4,448,200 @\$17,652
8	\$4,917,000 @\$19,512	\$4,523,640 @\$17,951
9	\$4,998,000 @\$19,833	\$4,598,160 @\$18,247
10	\$5,080,000 @\$20,159	\$4,673,600 @\$18,546
11	\$5,145,000 @\$20,417	\$4,733,400 @\$18,783
21	\$5,536,000 @\$21,968	\$5,093,120 @\$20,211
22	\$5,585,000 @\$22,163	\$5,138,200 @\$20,390
23	\$5,634,000 @\$22,357	\$5,183,280 @\$20,569
25	\$5,683,000 @\$22,552	\$5,228,360 @\$20,747
26	\$5,732,000 @\$22,746	\$5,273,440 @\$20,926

F: 1房 273'		
樓層	訂價	折實價8%
6	\$5,132,000 @\$18,799	\$4,721,440 @\$17,295
7	\$5,219,000 @\$19,117	\$4,801,480 @\$17,588
8	\$5,306,000 @\$19,436	\$4,881,520 @\$17,881
9	\$5,393,000 @\$19,755	\$4,961,560 @\$18,174
10	\$5,480,000 @\$20,073	\$5,041,600 @\$18,467
11	\$5,549,000 @\$20,326	\$5,105,080 @\$18,700
M: 1房 268'		
樓層	訂價	折實價8%
6	\$5,125,000 @\$19,123	\$4,715,000 @\$17,593
7	\$5,199,000 @\$19,399	\$4,783,080 @\$17,847
8	\$5,274,000 @\$19,679	\$4,852,080 @\$18,105
9	\$5,333,000 @\$19,899	\$4,906,360 @\$18,307
10	\$5,458,000 @\$20,366	\$5,021,360 @\$18,736
11	\$5,480,000 @\$20,448	\$5,041,600 @\$18,812
12	\$5,518,000 @\$20,590	\$5,076,560 @\$18,942
15	\$5,534,000 @\$20,649	\$5,091,280 @\$18,997
16	\$5,550,000 @\$20,709	\$5,106,000 @\$19,052
17	\$5,567,000 @\$20,772	\$5,121,640 @\$19,111
18	\$5,583,000 @\$20,832	\$5,136,360 @\$19,166

K: 1房 322'		
樓層	訂價	折實價8%
6	\$6,173,000 @\$19,171	\$5,679,160 @\$17,637
7	\$6,330,000 @\$19,658	\$5,823,600 @\$18,086
8	\$6,423,000 @\$19,947	\$5,909,160 @\$18,351
9	\$6,497,000 @\$20,177	\$5,977,240 @\$18,563
10	\$6,604,000 @\$20,509	\$6,075,680 @\$18,869
11	\$6,645,000 @\$20,637	\$6,113,400 @\$18,986
12	\$6,707,000 @\$20,829	\$6,170,440 @\$19,163
15	\$6,748,000 @\$20,957	\$6,208,160 @\$19,280
16	\$6,769,000 @\$21,022	\$6,227,480 @\$19,340
17	\$6,790,000 @\$21,087	\$6,246,800 @\$19,400
18	\$6,810,000 @\$21,149	\$6,265,200 @\$19,457
19	\$6,852,000 @\$21,280	\$6,303,840 @\$19,577
20	\$6,893,000 @\$21,407	\$6,341,560 @\$19,694
21	\$6,934,000 @\$21,534	\$6,379,280 @\$19,811
22	\$6,975,000 @\$21,661	\$6,417,000 @\$19,929

紅色為最高售價、最高平均呎價；藍色為最低售價、最低平均呎價

以上的物業資料只供參考，一切以發展商最新公布為準，如有任何資料錯漏本網頁不會承擔任何責任。