

新盤價單表

蒼鳴

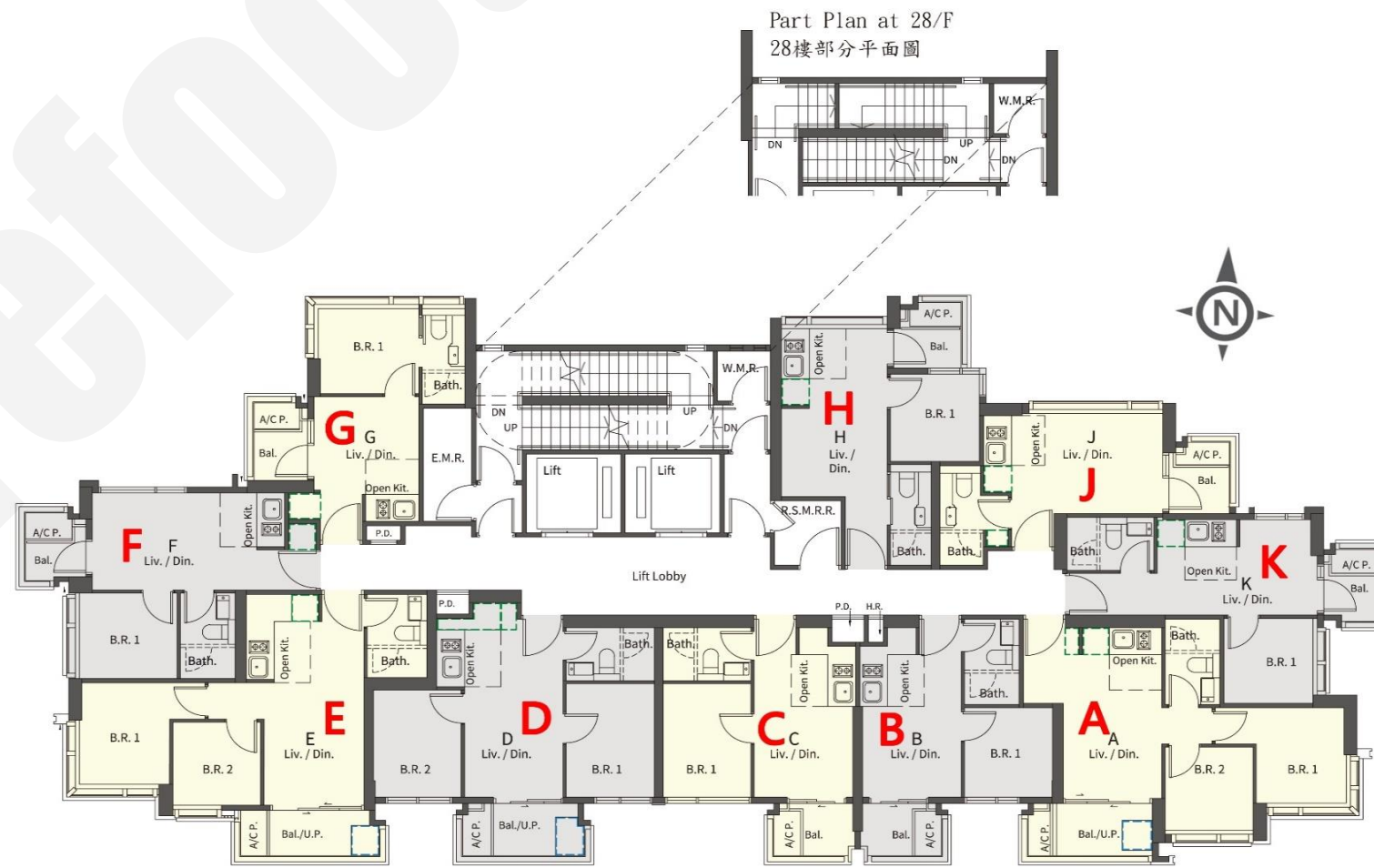
價單1號

以最高30%折扣計算

制作日期: 2024-01-04



B : 1房 204'/226'		
樓層	訂價	折實價30%
2	\$5,561,000 @\$27,260	\$3,892,700 @\$19,082
3	\$5,097,000 @\$22,553	\$3,567,900 @\$15,787
5	\$5,110,000 @\$22,611	\$3,577,000 @\$15,827
6	\$5,121,000 @\$22,659	\$3,584,700 @\$15,862
7	\$5,134,000 @\$22,717	\$3,593,800 @\$15,902
8	\$5,147,000 @\$22,774	\$3,602,900 @\$15,942
9	\$5,159,000 @\$22,827	\$3,611,300 @\$15,979
10	\$5,171,000 @\$22,881	\$3,619,700 @\$16,016
11	\$5,184,000 @\$22,938	\$3,628,800 @\$16,057
D : 2房 312'/350'		
樓層	訂價	折實價30%
2	\$8,249,000 @\$26,439	\$5,774,300 @\$18,507
3	\$7,126,000 @\$20,360	\$4,988,200 @\$14,252
5	\$7,149,000 @\$20,426	\$5,004,300 @\$14,298
6	\$7,174,000 @\$20,497	\$5,021,800 @\$14,348
7	\$7,199,000 @\$20,569	\$5,039,300 @\$14,398
8	\$7,223,000 @\$20,637	\$5,056,100 @\$14,446
9	\$7,249,000 @\$20,711	\$5,074,300 @\$14,498
10	\$7,273,000 @\$20,780	\$5,091,100 @\$14,546
11	\$7,297,000 @\$20,849	\$5,107,900 @\$14,594
12	\$7,323,000 @\$20,923	\$5,126,100 @\$14,646
15	\$7,347,000 @\$20,991	\$5,142,900 @\$14,694
16	\$7,371,000 @\$21,060	\$5,159,700 @\$14,742



A : 2房 356'		
樓層	訂價	折實價30%
3	\$7,411,000 @\$20,817	\$5,187,700 @\$14,572
5	\$7,437,000 @\$20,890	\$5,205,900 @\$14,623
6	\$7,461,000 @\$20,958	\$5,222,700 @\$14,671
7	\$7,486,000 @\$21,028	\$5,240,200 @\$14,720
8	\$7,511,000 @\$21,098	\$5,257,700 @\$14,769
9	\$7,536,000 @\$21,169	\$5,275,200 @\$14,818
10	\$7,560,000 @\$21,236	\$5,292,000 @\$14,865
11	\$7,586,000 @\$21,309	\$5,310,200 @\$14,916
12	\$7,610,000 @\$21,376	\$5,327,000 @\$14,963
15	\$7,634,000 @\$21,444	\$5,343,800 @\$15,011

K : 1房 242'		
樓層	訂價	折實價30%
3	\$5,357,000 @\$22,136	\$3,749,900 @\$15,495
5	\$5,370,000 @\$22,190	\$3,759,000 @\$15,533
6	\$5,381,000 @\$22,236	\$3,766,700 @\$15,565
7	\$5,394,000 @\$22,289	\$3,775,800 @\$15,602
8	\$5,407,000 @\$22,343	\$3,784,900 @\$15,640
9	\$5,419,000 @\$22,393	\$3,793,300 @\$15,675
J : 開放式 200'		
樓層	訂價	折實價30%
8	\$5,126,000 @\$25,630	\$3,588,200 @\$17,941
9	\$5,140,000 @\$25,700	\$3,598,000 @\$17,990

G : 1房 230'		
樓層	訂價	折實價30%
3	\$4,840,000 @\$21,043	\$3,388,000 @\$14,730
5	\$4,911,000 @\$21,352	\$3,437,700 @\$14,947
6	\$5,011,000 @\$21,787	\$3,507,700 @\$15,251
7	\$5,140,000 @\$22,348	\$3,598,000 @\$15,643
8	\$5,164,000 @\$22,452	\$3,614,800 @\$15,717
9	\$5,190,000 @\$22,565	\$3,633,000 @\$15,796
10	\$5,214,000 @\$22,670	\$3,649,800 @\$15,869
11	\$5,239,000 @\$22,778	\$3,667,300 @\$15,945
12	\$5,264,000 @\$22,887	\$3,684,800 @\$16,021
15	\$5,289,000 @\$22,996	\$3,702,300 @\$16,097
16	\$5,313,000 @\$23,100	\$3,719,100 @\$16,170

紅色為最高售價、最高平均呎價；藍色為最低售價、最低平均呎價

以上的物業資料只供參考，一切以發展商最新公布為準，如有任何資料錯漏本網頁不會承擔任何責任。

Squarefoot

Squarefoot

Squarefoot

新盤價單表

柏瓏I

價單1號

以最高16%折扣計算

制作日期: 2022-04-21



3座A5 : 2房 474'		
樓層	訂價	折實價16%
15	\$10,644,000 @\$22,456	\$8,940,960 @\$18,863
12	\$10,601,000 @\$22,365	\$8,904,840 @\$18,787
11	\$10,558,000 @\$22,274	\$8,868,720 @\$18,710
10	\$10,517,000 @\$22,188	\$8,834,280 @\$18,638
9	\$10,474,000 @\$22,097	\$8,798,160 @\$18,562
8	\$10,474,000 @\$22,097	\$8,798,160 @\$18,562
7	\$10,389,000 @\$21,918	\$8,726,760 @\$18,411
6	\$10,348,000 @\$21,831	\$8,692,320 @\$18,338
5	\$10,327,000 @\$21,787	\$8,674,680 @\$18,301
3座A2 : 3房連套房及儲物室 727'		
樓層	訂價	折實價16%
15	\$15,612,000 @\$21,475	\$13,114,080 @\$18,039
12	\$15,550,000 @\$21,389	\$13,062,000 @\$17,967
11	\$15,489,000 @\$21,305	\$13,010,760 @\$17,897
10	\$15,427,000 @\$21,220	\$12,958,680 @\$17,825
9	\$15,367,000 @\$21,138	\$12,908,280 @\$17,756
8	\$15,367,000 @\$21,138	\$12,908,280 @\$17,756
7	\$15,245,000 @\$20,970	\$12,805,800 @\$17,615
6	\$15,186,000 @\$20,889	\$12,756,240 @\$17,546
5	\$15,156,000 @\$20,847	\$12,731,040 @\$17,512



紅色為最高售價、最高平均呎價；藍色為最低售價、最低平均呎價

以上的物業資料只供參考，一切以發展商最新公布為準，如有任何資料錯漏本網頁不會承擔任何責任。

Squarefoot

Squarefoot

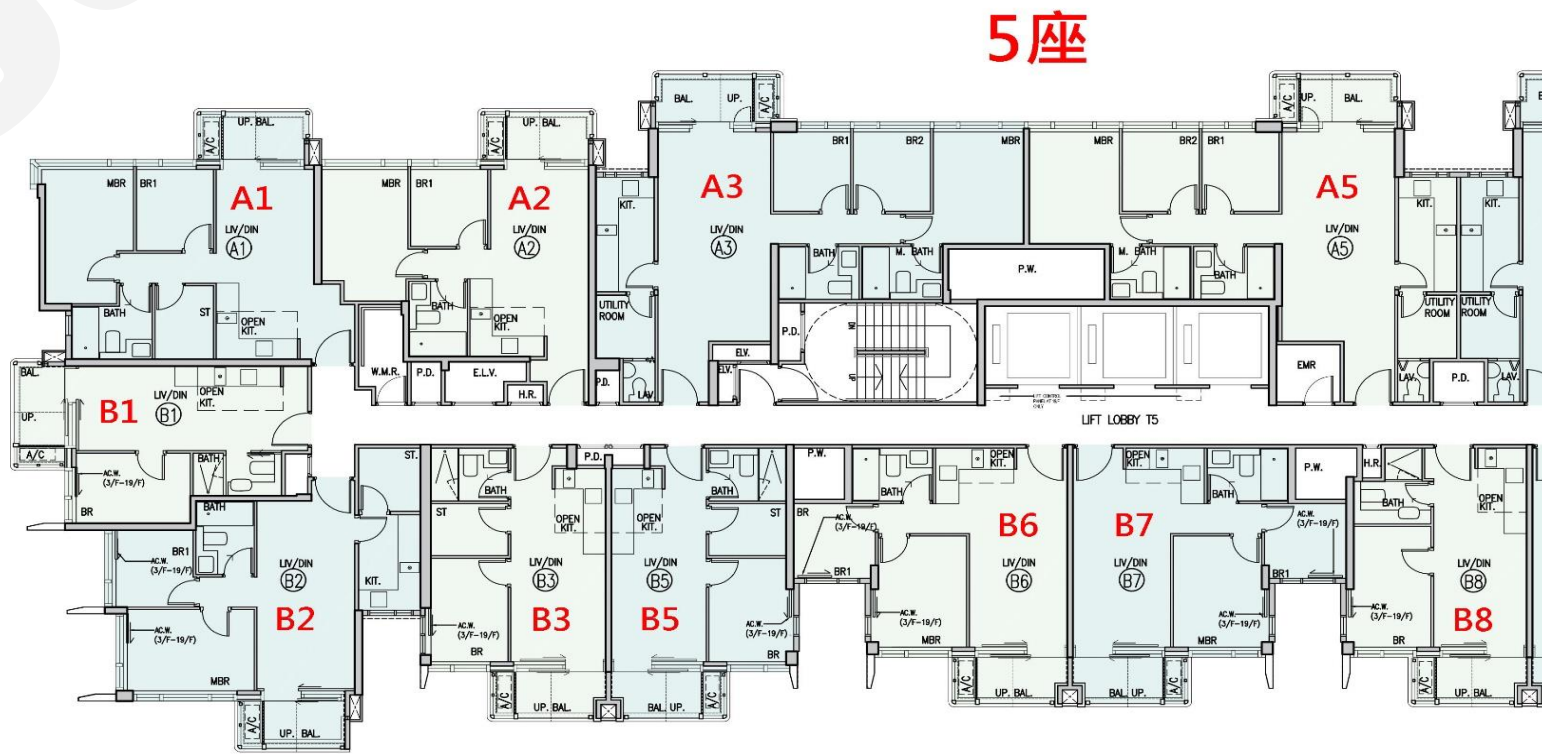
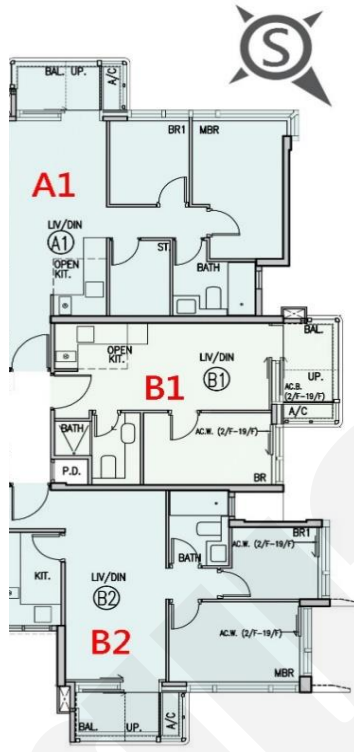
Squarefoot

新盤價單表

柏瓏I

價單1號

以最高16%折扣計算
制作日期: 2022-04-21



5座B8: 1房 354'		
樓層	訂價	折實價16%
16	\$7,967,000 @\$22,506	\$6,692,280 @\$18,905
15	\$7,927,000 @\$22,393	\$6,658,680 @\$18,810
12	\$7,887,000 @\$22,280	\$6,625,080 @\$18,715
11	\$7,846,000 @\$22,164	\$6,590,640 @\$18,618
10	\$7,807,000 @\$22,054	\$6,557,880 @\$18,525
9	\$7,768,000 @\$21,944	\$6,525,120 @\$18,433
8	\$7,768,000 @\$21,944	\$6,525,120 @\$18,433
7	\$7,689,000 @\$21,720	\$6,458,760 @\$18,245
6	\$7,651,000 @\$21,613	\$6,426,840 @\$18,155
5	\$7,596,000 @\$21,458	\$6,380,640 @\$18,024
3	\$7,543,000 @\$21,308	\$6,336,120 @\$17,899
2	\$7,490,000 @\$21,158	\$6,291,600 @\$17,773
1	\$7,437,000 @\$21,008	\$6,247,080 @\$17,647

5座B7: 2房 464'		
樓層	訂價	折實價16%
16	\$9,820,000 @\$21,164	\$8,248,800 @\$17,778
15	\$9,771,000 @\$21,058	\$8,207,640 @\$17,689
12	\$9,723,000 @\$20,955	\$8,167,320 @\$17,602
11	\$9,674,000 @\$20,849	\$8,126,160 @\$17,513
10	\$9,626,000 @\$20,746	\$8,085,840 @\$17,426
9	\$9,579,000 @\$20,644	\$8,046,360 @\$17,341
8	\$9,579,000 @\$20,644	\$8,046,360 @\$17,341
7	\$9,483,000 @\$20,438	\$7,965,720 @\$17,168
6	\$9,436,000 @\$20,336	\$7,926,240 @\$17,082
5	\$9,370,000 @\$20,194	\$7,870,800 @\$16,963
3	\$9,305,000 @\$20,054	\$7,816,200 @\$16,845
2	\$9,240,000 @\$19,914	\$7,761,600 @\$16,728
1	\$9,176,000 @\$19,776	\$7,707,840 @\$16,612

5座B6: 2房 464'		
樓層	訂價	折實價16%
16	\$9,800,000 @\$21,121	\$8,232,000 @\$17,741
15	\$9,751,000 @\$21,015	\$8,190,840 @\$17,653
12	\$9,702,000 @\$20,909	\$8,149,680 @\$17,564
11	\$9,655,000 @\$20,808	\$8,110,200 @\$17,479
10	\$9,607,000 @\$20,705	\$8,069,880 @\$17,392
9	\$9,558,000 @\$20,599	\$8,028,720 @\$17,303
8	\$9,558,000 @\$20,599	\$8,028,720 @\$17,303
7	\$9,464,000 @\$20,397	\$7,949,760 @\$17,133
6	\$9,417,000 @\$20,295	\$7,910,280 @\$17,048
5	\$9,351,000 @\$20,153	\$7,854,840 @\$16,929
3	\$9,287,000 @\$20,015	\$7,801,080 @\$16,813
2	\$9,223,000 @\$19,877	\$7,747,320 @\$16,697
1	\$9,158,000 @\$19,737	\$7,692,720 @\$16,579

5座B5: 1房及儲物室 384'		
樓層	訂價	折實價16%
16	\$8,556,000 @\$22,281	\$7,187,040 @\$18,716
15	\$8,514,000 @\$22,172	\$7,151,760 @\$18,624
12	\$8,471,000 @\$22,060	\$7,115,640 @\$18,530
11	\$8,430,000 @\$21,953	\$7,081,200 @\$18,441
10	\$8,387,000 @\$21,841	\$7,045,080 @\$18,347
9	\$8,345,000 @\$21,732	\$7,009,800 @\$18,255
8	\$8,345,000 @\$21,732	\$7,009,800 @\$18,255
7	\$8,263,000 @\$21,518	\$6,940,920 @\$18,075
6	\$8,221,000 @\$21,409	\$6,905,640 @\$17,983
5	\$8,164,000 @\$21,260	\$6,857,760 @\$17,859
3	\$8,108,000 @\$21,115	\$6,810,720 @\$17,736
2	\$8,051,000 @\$20,966	\$6,762,840 @\$17,612
1	\$7,995,000 @\$20,820	\$6,715,800 @\$17,489

5座A5: 3房連套房及工人套房 762'		
樓層	訂價	折實價16%
15	\$16,660,000 @\$21,864	\$13,994,400 @\$18,365
12	\$16,593,000 @\$21,776	\$13,938,120 @\$18,291
11	\$16,526,000 @\$21,688	\$13,881,840 @\$18,218
10	\$16,461,000 @\$21,602	\$13,827,240 @\$18,146
9	\$16,395,000 @\$21,516	\$13,771,800 @\$18,073
8	\$16,395,000 @\$21,516	\$13,771,800 @\$18,073
7	\$16,264,000 @\$21,344	\$13,661,760 @\$17,929
6	\$16,199,000 @\$21,259	\$13,607,160 @\$17,857
5	\$16,167,000 @\$21,217	\$13,580,280 @\$17,822
5	\$8,164,000 @\$21,260	\$6,857,760 @\$17,859

5座B3: 1房及儲物室 382'		
樓層	訂價	折實價16%
16	\$8,492,000 @\$22,230	\$7,133,280 @\$18,674
15	\$8,449,000 @\$22,118	\$7,097,160 @\$18,579
12	\$8,407,000 @\$22,008	\$7,061,880 @\$18,487
11	\$8,365,000 @\$21,898	\$7,026,600 @\$18,394
10	\$8,324,000 @\$21,791	\$6,992,160 @\$18,304
9	\$8,282,000 @\$21,681	\$6,956,880 @\$18,212
8	\$8,282,000 @\$21,681	\$6,956,880 @\$18,212
7	\$8,200,000 @\$21,466	\$6,888,000 @\$18,031
6	\$8,160,000 @\$21,361	\$6,854,400 @\$17,943
5	\$8,102,000 @\$21,209	\$6,805,680 @\$17,816
3	\$8,046,000 @\$21,063	\$6,758,640 @\$17,693
2	\$7,990,000 @\$20,916	\$6,711,600 @\$17,570
1	\$7,935,000 @\$20,772	\$6,665,400 @\$17,449

5座
樓層
16
15
12
11
10
9
8
7
6
5
3
2
1

紅色為最高售價、最高平均呎價；藍色為最低售價、最



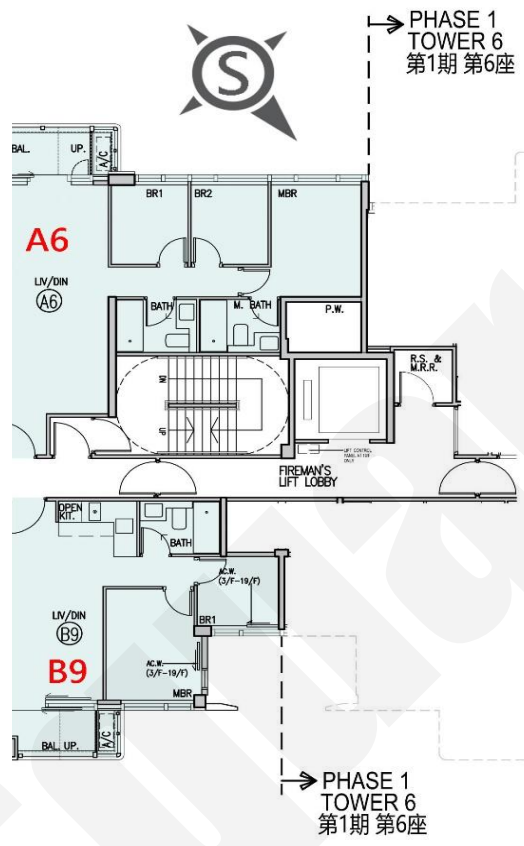
squarefoot



Squarefoot

Squarefoot

Squarefoot



B2 : 2房及儲物室 547/557'	
訂價	折實價16%
\$11,399,000 @\$20,839	\$9,575,160 @\$17,505
\$11,370,000 @\$20,786	\$9,550,800 @\$17,460
\$11,343,000 @\$20,737	\$9,528,120 @\$17,419
\$11,314,000 @\$20,684	\$9,503,760 @\$17,374
\$11,287,000 @\$20,634	\$9,481,080 @\$17,333
\$11,260,000 @\$20,585	\$9,458,400 @\$17,291
\$11,260,000 @\$20,585	\$9,458,400 @\$17,291
\$11,204,000 @\$20,483	\$9,411,360 @\$17,205
\$11,176,000 @\$20,431	\$9,387,840 @\$17,162
\$11,132,000 @\$20,351	\$9,350,880 @\$17,095
\$11,088,000 @\$20,271	\$9,313,920 @\$17,027
\$11,044,000 @\$20,190	\$9,276,960 @\$16,960
\$11,200,000 @\$20,108	\$9,408,000 @\$16,890

最低平均呎價

