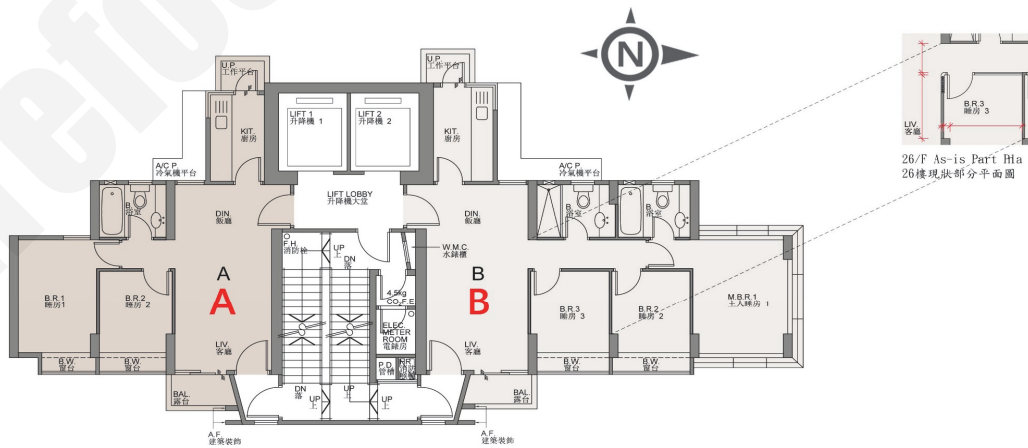


B : 3房連套房 708'		
樓層	訂價	折實價11%
6	\$13,537,000 @\$19,120	\$12,047,930 @\$17,917
7	\$13,622,000 @\$19,240	\$12,123,580 @\$17,124
8	\$13,727,000 @\$19,388	\$12,217,030 @\$17,256
9	\$13,831,000 @\$19,535	\$12,309,590 @\$17,386
10	\$13,936,000 @\$19,684	\$12,403,040 @\$17,518
11	\$14,041,000 @\$19,846	\$12,505,390 @\$17,663
12	\$14,163,000 @\$20,004	\$12,605,070 @\$17,804
15	\$14,278,000 @\$20,167	\$12,707,420 @\$17,948
16	\$14,399,000 @\$20,338	\$12,815,110 @\$18,100
17	\$14,521,000 @\$20,510	\$12,923,690 @\$18,254
19	\$14,740,000 @\$20,819	\$13,118,600 @\$18,529
20	\$14,940,000 @\$21,102	\$13,296,600 @\$18,781
21	\$15,143,000 @\$21,388	\$13,477,270 @\$19,036
22	\$15,343,000 @\$21,671	\$13,655,270 @\$19,287
23	\$15,552,000 @\$21,966	\$13,841,280 @\$19,550

A : 2房 510'		
樓層	訂價	折實價11%
7	\$9,663,000 @\$18,947	\$8,600,070 @\$16,863
8	\$9,737,000 @\$19,092	\$8,665,930 @\$16,992
9	\$9,811,000 @\$19,237	\$8,731,790 @\$17,121
10	\$9,887,000 @\$19,386	\$8,799,430 @\$17,254
11	\$9,966,000 @\$19,541	\$8,869,740 @\$17,392
12	\$10,047,000 @\$19,700	\$8,941,830 @\$17,533
15	\$10,127,000 @\$19,857	\$9,013,030 @\$17,673
16	\$10,215,000 @\$20,029	\$9,091,350 @\$17,826
17	\$10,301,000 @\$20,198	\$9,167,890 @\$17,976
19	\$10,456,000 @\$20,502	\$9,305,840 @\$18,247
20	\$10,598,000 @\$20,780	\$9,432,220 @\$18,495
21	\$10,740,000 @\$21,059	\$9,558,600 @\$18,742
22	\$10,883,000 @\$21,339	\$9,685,870 @\$18,992
23	\$11,031,000 @\$21,629	\$9,817,590 @\$19,250



紅色為最高售價、最高平均呎價；藍色為最低售價、最低平均呎價