

新盤價單表

親海駅II

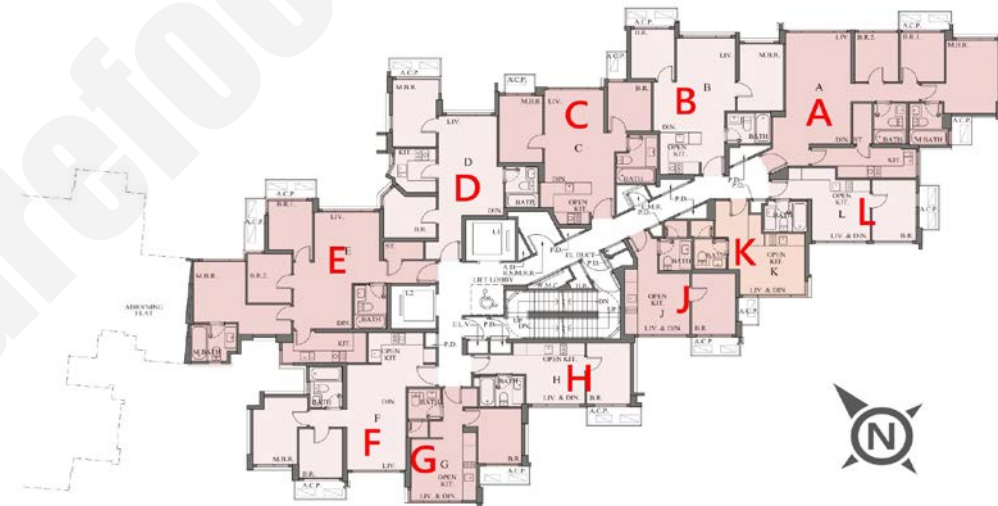
價單1號

以最高18%/19%(3房)折扣計算

制作日期: 2023-08-04



K: 開放式 210'		
樓層	訂價	折實價18%
31	\$3,971,000 @\$18,910	\$3,256,220 @\$15,506
30	\$3,960,000 @\$18,857	\$3,247,200 @\$15,463
29	\$3,948,000 @\$18,800	\$3,237,360 @\$15,416
28	\$3,936,000 @\$18,743	\$3,227,520 @\$15,369
27	\$3,898,000 @\$18,562	\$3,196,360 @\$15,221
26	\$3,886,000 @\$18,505	\$3,186,520 @\$15,174
25	\$3,874,000 @\$18,448	\$3,176,680 @\$15,127
23	\$3,862,000 @\$18,390	\$3,166,840 @\$15,080
20	\$3,827,000 @\$18,224	\$3,138,140 @\$14,944
19	\$3,816,000 @\$18,171	\$3,129,120 @\$14,901
18	\$3,804,000 @\$18,114	\$3,119,280 @\$14,854
17	\$3,794,000 @\$18,067	\$3,111,080 @\$14,815
15	\$3,749,000 @\$17,852	\$3,074,180 @\$14,639
12	\$3,741,000 @\$17,814	\$3,067,620 @\$14,608
11	\$3,734,000 @\$17,781	\$3,061,880 @\$14,580
10	\$3,726,000 @\$17,743	\$3,055,320 @\$14,549
9	\$3,714,000 @\$17,686	\$3,045,480 @\$14,502
8	\$3,704,000 @\$17,638	\$3,037,280 @\$14,463
7	\$3,693,000 @\$17,586	\$3,028,260 @\$14,420
6	\$3,681,000 @\$17,529	\$3,018,420 @\$14,373
5	\$3,670,000 @\$17,476	\$3,009,400 @\$14,330
1	\$3,536,000 @\$16,838	\$2,899,520 @\$13,807
D: 2房 464'/465'		
樓層	訂價	折實價18%
30	\$8,826,000 @\$19,022	\$7,237,320 @\$15,598
29	\$8,801,000 @\$18,968	\$7,216,820 @\$15,553
28	\$8,757,000 @\$18,873	\$7,180,740 @\$15,476
27	\$8,670,000 @\$18,685	\$7,109,400 @\$15,322
23	\$8,592,000 @\$18,517	\$7,045,440 @\$15,184
22	\$8,567,000 @\$18,463	\$7,024,940 @\$15,140
21	\$8,541,000 @\$18,407	\$7,003,620 @\$15,094
20	\$8,516,000 @\$18,353	\$6,983,120 @\$15,050
19	\$8,489,000 @\$18,295	\$6,960,980 @\$15,002
16	\$8,390,000 @\$18,082	\$6,879,800 @\$14,827
15	\$8,363,000 @\$18,024	\$6,857,660 @\$14,779
12	\$8,339,000 @\$17,972	\$6,837,980 @\$14,737
11	\$8,297,000 @\$17,881	\$6,803,540 @\$14,663
10	\$8,256,000 @\$17,793	\$6,769,920 @\$14,590
9	\$8,214,000 @\$17,703	\$6,735,480 @\$14,516
6	\$8,110,000 @\$17,441	\$6,650,200 @\$14,302
5	\$8,028,000 @\$17,265	\$6,582,960 @\$14,157



J: 1房 272'		
樓層	訂價	折實價18%
31	\$5,168,000 @\$19,000	\$4,237,760 @\$15,580
30	\$5,151,000 @\$18,938	\$4,223,820 @\$15,529
29	\$5,136,000 @\$18,882	\$4,211,520 @\$15,484
28	\$5,121,000 @\$18,827	\$4,199,220 @\$15,438
27	\$5,070,000 @\$18,640	\$4,157,400 @\$15,285
26	\$5,056,000 @\$18,588	\$4,145,920 @\$15,242
25	\$5,039,000 @\$18,526	\$4,131,980 @\$15,191
23	\$5,025,000 @\$18,474	\$4,120,500 @\$15,149
20	\$4,980,000 @\$18,309	\$4,083,600 @\$15,013
19	\$4,965,000 @\$18,254	\$4,071,300 @\$14,968
18	\$4,950,000 @\$18,199	\$4,059,000 @\$14,923
17	\$4,935,000 @\$18,143	\$4,046,700 @\$14,878
15	\$4,877,000 @\$17,930	\$3,999,140 @\$14,703
12	\$4,868,000 @\$17,897	\$3,991,760 @\$14,676
11	\$4,858,000 @\$17,860	\$3,983,560 @\$14,645
10	\$4,847,000 @\$17,820	\$3,974,540 @\$14,612
9	\$4,833,000 @\$17,768	\$3,963,060 @\$14,570
8	\$4,818,000 @\$17,713	\$3,950,760 @\$14,525
7	\$4,804,000 @\$17,662	\$3,939,280 @\$14,483
6	\$4,790,000 @\$17,610	\$3,927,800 @\$14,440
5	\$4,775,000 @\$17,555	\$3,915,500 @\$14,395
1	\$4,600,000 @\$16,912	\$3,772,000 @\$13,868

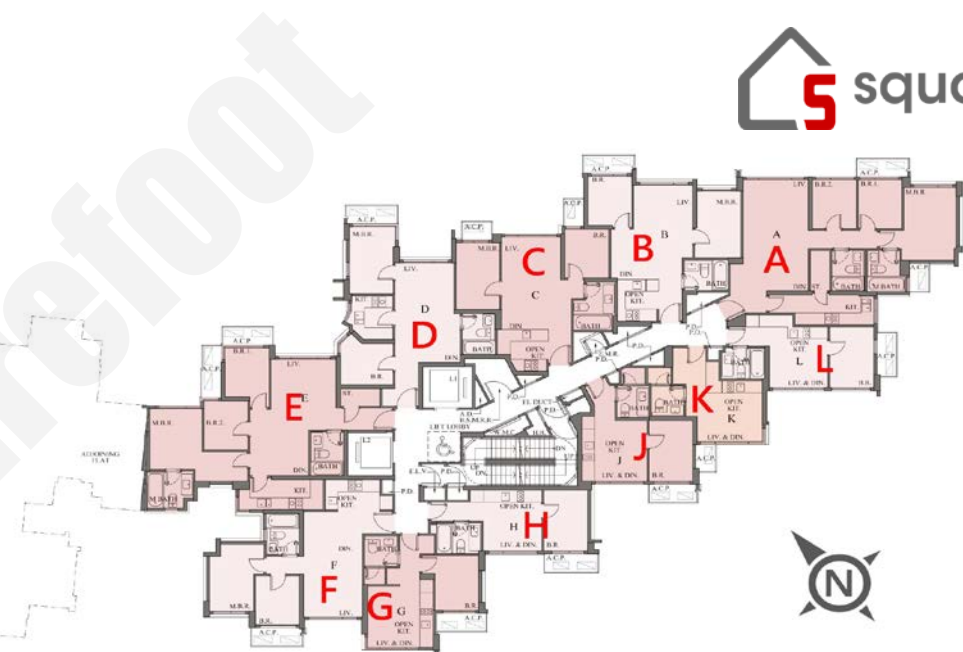
H: 1房 263'		
樓層	訂價	折實價18%
31	\$5,262,000 @\$20,008	\$4,314,840 @\$16,406
30	\$5,247,000 @\$19,951	\$4,302,540 @\$16,359
29	\$5,231,000 @\$19,890	\$4,289,420 @\$16,310
28	\$5,216,000 @\$19,833	\$4,277,120 @\$16,263
27	\$5,164,000 @\$19,635	\$4,234,480 @\$16,101
26	\$5,148,000 @\$19,574	\$4,221,360 @\$16,051
25	\$5,133,000 @\$19,517	\$4,209,060 @\$16,004
23	\$5,118,000 @\$19,460	\$4,196,760 @\$15,957
20	\$5,072,000 @\$19,285	\$4,159,040 @\$15,814
19	\$5,056,000 @\$19,224	\$4,145,920 @\$15,764
18	\$5,042,000 @\$19,171	\$4,134,440 @\$15,720
17	\$5,026,000 @\$19,110	\$4,121,320 @\$15,670
15	\$4,967,000 @\$18,886	\$4,072,940 @\$15,486
12	\$4,956,000 @\$18,844	\$4,063,920 @\$15,452
11	\$4,947,000 @\$18,810	\$4,056,540 @\$15,424
10	\$4,937,000 @\$18,772	\$4,048,340 @\$15,393
9	\$4,912,000 @\$18,677	\$4,027,840 @\$15,315
8	\$4,898,000 @\$18,624	\$4,016,360 @\$15,271
7	\$4,883,000 @\$18,567	\$4,004,060 @\$15,225
6	\$4,868,000 @\$18,510	\$3,991,760 @\$15,178
5	\$4,854,000 @\$18,456	\$3,980,280 @\$15,134

C: 2房 447'		
樓層	訂價	折實價18%
30	\$8,406,000 @\$18,805	\$6,892,920 @\$15,420
29	\$8,382,000 @\$18,752	\$6,873,240 @\$15,376
28	\$8,340,000 @\$18,658	\$6,838,800 @\$15,299
27	\$8,259,000 @\$18,477	\$6,772,380 @\$15,151
23	\$8,184,000 @\$18,309	\$6,710,880 @\$15,013
22	\$8,159,000 @\$18,253	\$6,690,380 @\$14,967
21	\$8,135,000 @\$18,199	\$6,670,700 @\$14,923
20	\$8,111,000 @\$18,145	\$6,651,020 @\$14,879
19	\$8,086,000 @\$18,089	\$6,630,520 @\$14,833
16	\$7,990,000 @\$17,875	\$6,551,800 @\$14,657
15	\$7,967,000 @\$17,823	\$6,532,940 @\$14,615
12	\$7,926,000 @\$17,732	\$6,499,320 @\$14,540
11	\$7,887,000 @\$17,644	\$6,467,340 @\$14,468
10	\$7,848,000 @\$17,557	\$6,435,360 @\$14,397
9	\$7,809,000 @\$17,470	\$6,403,380 @\$14,325
6	\$7,692,000 @\$17,208	\$6,307,440 @\$14,111
5	\$7,614,000 @\$17,034	\$6,243,480 @\$13,968

紅色為最高售價、最高平均呎價；藍色為最低售價、最低平均呎價

以上的物業資料只供參考，一切以發展商最新公布為準，如有任何資料錯漏本網頁不會承擔任何責任。

B : 2房 449'		
樓層	訂價	折實價18%
30	\$8,634,000 @\$19,229	\$7,079,880 @\$15,768
29	\$8,608,000 @\$19,171	\$7,058,560 @\$15,721
28	\$8,566,000 @\$19,078	\$7,024,120 @\$15,644
27	\$8,481,000 @\$18,889	\$6,954,420 @\$15,489
23	\$8,405,000 @\$18,719	\$6,892,100 @\$15,350
22	\$8,380,000 @\$18,664	\$6,871,600 @\$15,304
21	\$8,355,000 @\$18,608	\$6,851,100 @\$15,259
20	\$8,330,000 @\$18,552	\$6,830,600 @\$15,213
19	\$8,304,000 @\$18,494	\$6,809,280 @\$15,165
16	\$8,206,000 @\$18,276	\$6,728,920 @\$14,986
15	\$8,182,000 @\$18,223	\$6,709,240 @\$14,943
12	\$8,141,000 @\$18,131	\$6,675,620 @\$14,868
11	\$8,100,000 @\$18,040	\$6,642,000 @\$14,793
10	\$8,060,000 @\$17,951	\$6,609,200 @\$14,720
9	\$8,020,000 @\$17,862	\$6,576,400 @\$14,647
6	\$7,900,000 @\$17,595	\$6,478,000 @\$14,428
5	\$7,821,000 @\$17,419	\$6,413,220 @\$14,283
1	\$7,361,000 @\$16,394	\$6,036,020 @\$13,443



A : 3房 718'		
樓層	訂價	折實價19%
30	\$13,757,000 @\$19,160	\$11,143,170 @\$15,520
29	\$13,716,000 @\$19,103	\$11,109,960 @\$15,473
28	\$13,647,000 @\$19,007	\$11,054,070 @\$15,396
27	\$13,512,000 @\$18,819	\$10,944,720 @\$15,243
23	\$13,391,000 @\$18,650	\$10,846,710 @\$15,107
22	\$13,352,000 @\$18,596	\$10,815,120 @\$15,063
21	\$13,311,000 @\$18,539	\$10,781,910 @\$15,017
20	\$13,271,000 @\$18,483	\$10,749,510 @\$14,971
19	\$13,233,000 @\$18,430	\$10,718,730 @\$14,929
16	\$13,075,000 @\$18,210	\$10,590,750 @\$14,750
15	\$13,035,000 @\$18,155	\$10,558,350 @\$14,705
12	\$12,997,000 @\$18,102	\$10,527,570 @\$14,662
11	\$12,932,000 @\$18,011	\$10,474,920 @\$14,589
10	\$12,867,000 @\$17,921	\$10,422,270 @\$14,516
9	\$12,803,000 @\$17,831	\$10,370,430 @\$14,443

紅色為最高售價、最高平均呎價；藍色為最低售價、最低平均呎價