

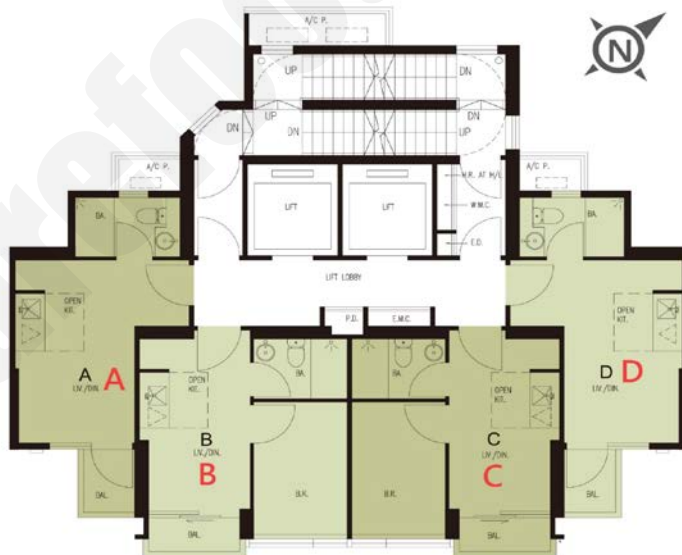
新盤價單表

明雋

價單1號

以最高20%折扣計算

制作日期: 2023-06-23



D : 開放式 231'

樓層	訂價	折實價20%
16	\$5,690,000 @\$24,632	\$4,552,000 @\$19,706
15	\$5,590,000 @\$24,199	\$4,472,000 @\$19,359
12	\$5,491,000 @\$23,771	\$4,392,800 @\$19,016
10	\$5,284,000 @\$22,874	\$4,227,200 @\$18,300
9	\$5,176,000 @\$22,407	\$4,140,800 @\$17,926
7	\$4,943,000 @\$21,398	\$3,954,400 @\$17,119
6	\$4,845,000 @\$20,974	\$3,876,000 @\$16,779
5	\$4,732,000 @\$20,485	\$3,785,600 @\$16,388

A : 開放式 232'

樓層	訂價	折實價20%
16	\$5,726,000 @\$24,681	\$4,580,800 @\$19,745
15	\$5,625,000 @\$24,246	\$4,500,000 @\$19,397
12	\$5,526,000 @\$23,819	\$4,420,800 @\$19,055
10	\$5,308,000 @\$22,879	\$4,246,400 @\$18,303
9	\$5,199,000 @\$22,409	\$4,159,200 @\$17,928
7	\$4,964,000 @\$21,397	\$3,971,200 @\$17,117
6	\$4,866,000 @\$20,974	\$3,892,800 @\$16,779
5	\$4,771,000 @\$20,565	\$3,816,800 @\$16,452

C : 1房 260'

樓層	訂價	折實價20%
15	\$6,765,000 @\$26,019	\$5,412,000 @\$20,815
12	\$6,633,000 @\$25,512	\$5,306,400 @\$20,409
10	\$6,320,000 @\$24,308	\$5,056,000 @\$19,446
9	\$6,173,000 @\$23,742	\$4,938,400 @\$18,994
7	\$5,888,000 @\$22,646	\$4,710,400 @\$18,117
6	\$5,761,000 @\$22,158	\$4,608,800 @\$17,726
5	\$5,638,000 @\$21,685	\$4,510,400 @\$17,348

B : 1房 259'

樓層	訂價	折實價20%
15	\$6,739,000 @\$26,019	\$5,391,200 @\$20,815
12	\$6,608,000 @\$25,514	\$5,286,400 @\$20,411
10	\$6,296,000 @\$24,309	\$5,036,800 @\$19,447
9	\$6,149,000 @\$23,741	\$4,919,200 @\$18,993
7	\$5,865,000 @\$22,645	\$4,692,000 @\$18,116
6	\$5,739,000 @\$22,158	\$4,591,200 @\$17,727
5	\$5,597,000 @\$21,610	\$4,477,600 @\$17,288

紅色為最高售價、最高平均呎價；藍色為最低售價、最低平均呎價