

新盤價單表

弦岸

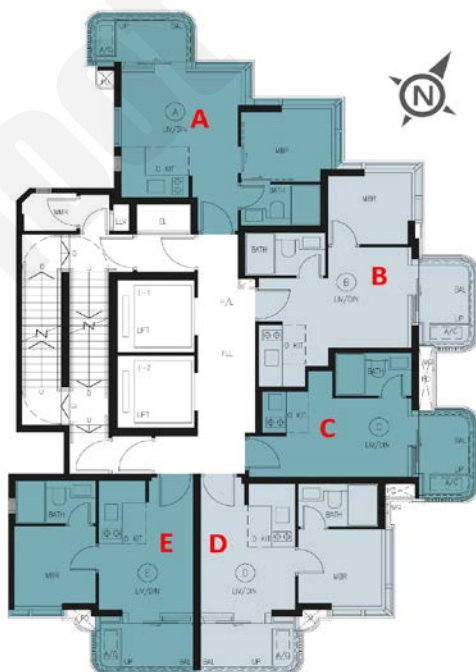
價單1號

以最高16%折扣計算

制作日期: 2023-06-13



C : 開放式 205'		
樓層	訂價	折實價16%
19	\$6,782,000 @\$33,083	\$5,696,880 @\$27,790
18	\$6,782,000 @\$33,083	\$5,696,880 @\$27,790
17	\$6,694,000 @\$32,654	\$5,622,960 @\$27,429
16	\$6,652,000 @\$32,449	\$5,587,680 @\$27,257
15	\$6,613,000 @\$32,259	\$5,554,920 @\$27,097
12	\$6,577,000 @\$32,083	\$5,524,680 @\$26,950
11	\$6,543,000 @\$31,917	\$5,496,120 @\$26,810
10	\$6,511,000 @\$31,761	\$5,469,240 @\$26,679
9	\$6,482,000 @\$31,620	\$5,444,880 @\$26,560
8	\$6,482,000 @\$31,620	\$5,444,880 @\$26,560
7	\$6,428,000 @\$31,356	\$5,399,520 @\$26,339
6	\$6,379,000 @\$31,117	\$5,358,360 @\$26,138
5	\$6,331,000 @\$30,883	\$5,318,040 @\$25,942



D : 1房 272'		
樓層	訂價	折實價16%
17	\$8,904,000 @\$32,735	\$7,479,360 @\$27,498
16	\$8,849,000 @\$32,533	\$7,433,160 @\$27,328
15	\$8,797,000 @\$32,342	\$7,389,480 @\$27,167
12	\$8,748,000 @\$32,162	\$7,348,320 @\$27,016
11	\$8,703,000 @\$31,996	\$7,310,520 @\$26,877
10	\$8,661,000 @\$31,842	\$7,275,240 @\$26,747
9	\$8,622,000 @\$31,699	\$7,242,480 @\$26,627
8	\$8,622,000 @\$31,699	\$7,242,480 @\$26,627
7	\$8,551,000 @\$31,438	\$7,182,840 @\$26,408
6	\$8,486,000 @\$31,199	\$7,128,240 @\$26,207

E : 1房 274'		
樓層	訂價	折實價16%
17	\$8,883,000 @\$32,420	\$7,461,720 @\$27,233
16	\$8,828,000 @\$32,219	\$7,415,520 @\$27,064
15	\$8,776,000 @\$32,029	\$7,371,840 @\$26,905
12	\$8,727,000 @\$31,850	\$7,330,680 @\$26,754
11	\$8,681,000 @\$31,682	\$7,292,040 @\$26,613
10	\$8,639,000 @\$31,529	\$7,256,760 @\$26,485
9	\$8,599,000 @\$31,383	\$7,223,160 @\$26,362
8	\$8,599,000 @\$31,383	\$7,223,160 @\$26,362
7	\$8,528,000 @\$31,124	\$7,163,520 @\$26,144
6	\$8,462,000 @\$30,883	\$7,108,080 @\$25,942

A : 1房 317'		
樓層	訂價	折實價16%
15	\$10,421,000 @\$32,874	\$8,753,640 @\$27,614
12	\$10,364,000 @\$32,694	\$8,705,760 @\$27,463
11	\$10,311,000 @\$32,527	\$8,661,240 @\$27,323
10	\$10,262,000 @\$32,372	\$8,620,080 @\$27,193
9	\$10,217,000 @\$32,230	\$8,582,280 @\$27,073
8	\$10,217,000 @\$32,230	\$8,582,280 @\$27,073
7	\$10,134,000 @\$31,968	\$8,512,560 @\$26,854
6	\$10,070,000 @\$31,767	\$8,458,800 @\$26,684
B : 1房 292'		
樓層	訂價	折實價16%
15	\$9,515,000 @\$32,586	\$7,992,600 @\$27,372
12	\$9,463,000 @\$32,408	\$7,948,920 @\$27,222
11	\$9,415,000 @\$32,243	\$7,908,600 @\$27,084
10	\$9,369,000 @\$32,086	\$7,869,960 @\$26,952
9	\$9,328,000 @\$31,945	\$7,835,520 @\$26,834
8	\$9,328,000 @\$31,945	\$7,835,520 @\$26,834
7	\$9,251,000 @\$31,682	\$7,770,840 @\$26,612
6	\$9,189,000 @\$31,469	\$7,718,760 @\$26,434
5	\$9,160,000 @\$31,370	\$7,694,400 @\$26,351

紅色為最高售價、最高平均呎價；藍色為最低售價、最低平均呎價

以上的物業資料只供參考，一切以發展商最新公布為準，如有任何資料錯漏本網頁不會承擔任何責任。