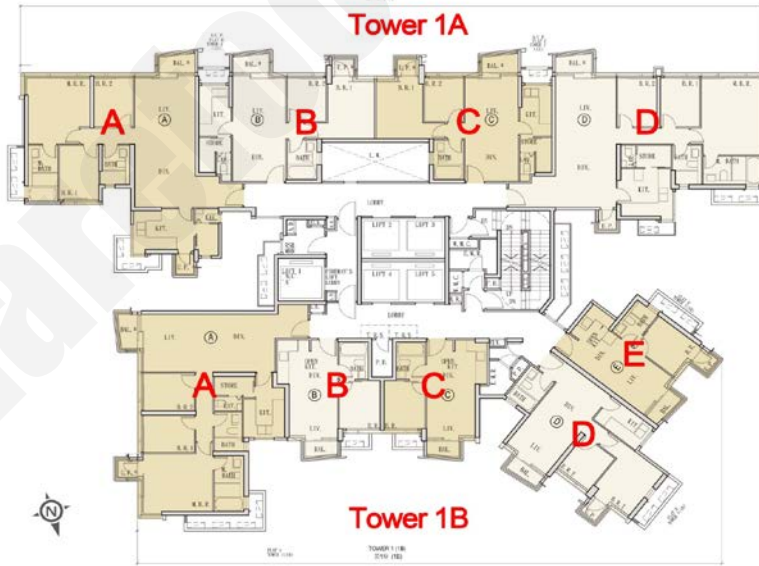


新盤價單表

瑜一·天海

價單1號

以最高15%折扣計算  
制作日期: 2023-05-22



1B座 E: 1房 327/364'		
樓層	訂價	折實價15%
28	Sold	
27	Sold	
26	\$10,439,000 @\$28,679	\$8,873,150 @\$24,377
25	\$10,408,000 @\$28,593	\$8,846,800 @\$24,304
23	Sold	
22	Sold	
21	Sold	
20	\$10,284,000 @\$28,253	\$8,741,400 @\$24,015
19	Sold	
18	Sold	
17	\$10,191,000 @\$27,997	\$8,662,350 @\$23,798
16	Sold	
15	\$10,131,000 @\$27,832	\$8,611,350 @\$23,658
12	\$10,091,000 @\$27,723	\$8,577,350 @\$23,564
11	\$10,050,000 @\$27,610	\$8,542,500 @\$23,468
10	Sold	
9	\$9,804,000 @\$26,934	\$8,333,400 @\$22,894
8	Sold	
7	Sold	
6	\$9,706,000 @\$26,665	\$8,250,100 @\$22,665
5	\$9,658,000 @\$26,533	\$8,209,300 @\$22,553
3	\$9,516,000 @\$26,143	\$8,088,600 @\$22,221
2	\$9,399,000 @\$25,821	\$7,989,150 @\$21,948
1	\$9,810,000 @\$30,000	\$8,338,500 @\$25,500

1B座 A: 3房連套房 917/960'		
樓層	訂價	折實價15%
18	\$35,167,000 @\$36,632	\$29,891,950 @\$31,137
17	\$34,750,000 @\$36,198	\$29,537,500 @\$30,768
16	\$34,542,000 @\$35,981	\$29,360,700 @\$30,584
15	\$34,336,000 @\$35,767	\$29,185,600 @\$30,402
12	\$34,131,000 @\$35,553	\$29,011,350 @\$30,220
11	\$33,928,000 @\$35,342	\$28,838,800 @\$30,040
10	Sold	
9	Sold	
8	\$32,513,000 @\$33,868	\$27,636,050 @\$28,788
7	\$31,720,000 @\$33,042	\$26,962,000 @\$28,085
6	\$30,946,000 @\$32,235	\$26,304,100 @\$27,400
5	\$30,192,000 @\$31,450	\$25,663,200 @\$26,733
3	\$29,456,000 @\$30,683	\$25,037,600 @\$26,081
2	\$28,737,000 @\$29,934	\$24,426,450 @\$25,444
1	Sold	

紅色為最高售價、最高平均呎價；藍色為最低售價、最低平均呎價

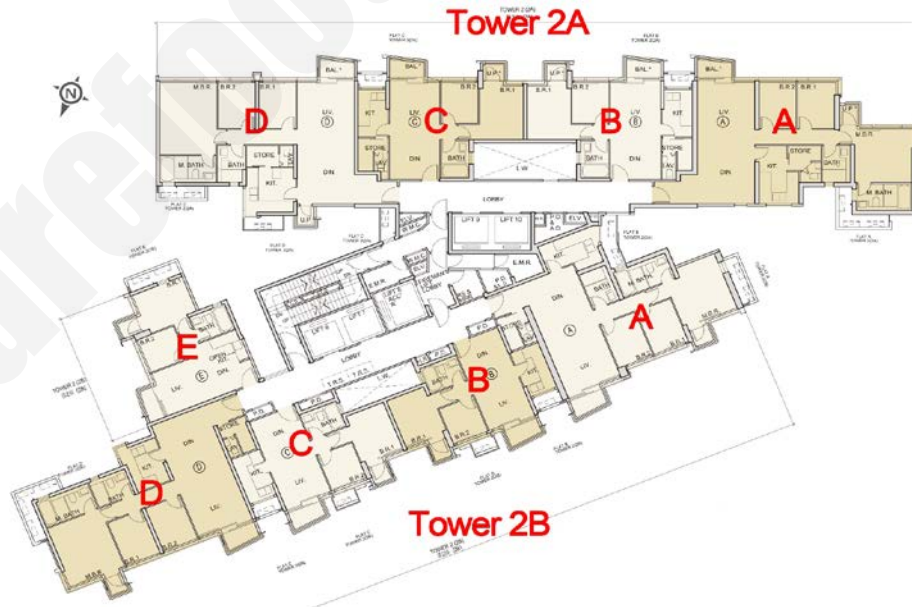
以上的物業資料只供參考，一切以發展商最新公布為準，如有任何資料錯漏本網頁不會承擔任何責任。

新盤價單表

瑜一·天海

價單1號

以最高15%折扣計算  
制作日期: 2023-05-22



2A座 B: 2房 555'/597'		
樓層	訂價	折實價15%
11	Sold	
10	\$21,739,000 @\$36,414	\$18,478,150 @\$30,952
9	\$21,524,000 @\$36,054	\$18,295,400 @\$30,646
8	\$20,938,000 @\$35,072	\$17,797,300 @\$29,811
7	Sold	
6	\$19,736,000 @\$33,059	\$16,775,600 @\$28,100
5	Sold	
3	\$18,603,000 @\$31,161	\$15,812,550 @\$26,487
2	\$18,061,000 @\$30,253	\$15,351,850 @\$25,715
1	\$19,882,000 @\$35,823	\$16,899,700 @\$30,450

2B座 B: 2房 482'/525'		
樓層	訂價	折實價15%
20	\$17,892,000 @\$34,080	\$15,208,200 @\$28,968
19	\$17,750,000 @\$33,810	\$15,087,500 @\$28,738
18	\$17,750,000 @\$33,810	\$15,087,500 @\$28,738
17	\$17,574,000 @\$33,474	\$14,937,900 @\$28,453
16	\$17,487,000 @\$33,309	\$14,863,950 @\$28,312
15	\$17,400,000 @\$33,143	\$14,790,000 @\$28,171
12	\$17,313,000 @\$32,977	\$14,716,050 @\$28,031
11	Sold	
10	\$16,889,000 @\$32,170	\$14,355,650 @\$27,344
9	\$16,640,000 @\$31,695	\$14,144,000 @\$26,941
8	\$16,394,000 @\$31,227	\$13,934,900 @\$26,543
7	Sold	
6	Sold	
5	\$15,678,000 @\$29,863	\$13,326,300 @\$25,383
3	\$15,371,000 @\$29,278	\$13,065,350 @\$24,886
2	\$14,996,000 @\$28,564	\$12,746,600 @\$24,279
1	\$16,008,000 @\$33,212	\$13,606,800 @\$28,230

2A座 C: 2房 550'/593'		
樓層	訂價	折實價15%
11	Sold	
10	\$21,561,000 @\$36,359	\$18,326,850 @\$30,905
9	\$21,348,000 @\$36,000	\$18,145,800 @\$30,600
8	\$20,767,000 @\$35,020	\$17,651,950 @\$29,767
7	\$20,162,000 @\$34,000	\$17,137,700 @\$28,900
6	Sold	
5	\$19,004,000 @\$32,047	\$16,153,400 @\$27,240
3	Sold	
2	Sold	
1	\$19,574,000 @\$35,589	\$16,637,900 @\$30,251

2B座 C: 2房 479'/522'		
樓層	訂價	折實價15%
20	\$17,681,000 @\$33,872	\$15,028,850 @\$28,791
19	\$17,541,000 @\$33,603	\$14,909,850 @\$28,563
18	\$17,541,000 @\$33,603	\$14,909,850 @\$28,563
17	\$17,367,000 @\$33,270	\$14,761,950 @\$28,280
16	\$17,280,000 @\$33,103	\$14,688,000 @\$28,138
15	\$17,194,000 @\$32,939	\$14,614,900 @\$27,998
12	\$17,108,000 @\$32,774	\$14,541,800 @\$27,858
11	Sold	
10	\$16,689,000 @\$31,971	\$14,185,650 @\$27,176
9	\$16,442,000 @\$31,498	\$13,975,700 @\$26,773
8	\$16,199,000 @\$31,033	\$13,769,150 @\$26,378
7	Sold	
6	Sold	
5	\$15,492,000 @\$29,678	\$13,168,200 @\$25,226
3	\$15,188,000 @\$29,096	\$12,909,800 @\$24,731
2	\$14,817,000 @\$28,385	\$12,594,450 @\$24,127
1	\$16,230,000 @\$33,883	\$13,795,500 @\$28,801

2B座 E: 2房 431'/469'		
樓層	訂價	折實價15%
28	\$14,940,000 @\$31,855	\$12,699,000 @\$27,077
27	\$14,851,000 @\$31,665	\$12,623,350 @\$26,915
26	\$14,762,000 @\$31,475	\$12,547,700 @\$26,754
25	\$14,674,000 @\$31,288	\$12,472,900 @\$26,595
23	\$14,586,000 @\$31,100	\$12,398,100 @\$26,435
22	\$14,499,000 @\$30,915	\$12,324,150 @\$26,278
21	Sold	
20	Sold	
19	Sold	
18	Sold	
17	Sold	
16	Sold	
15	Sold	
12	Sold	
11	Sold	
10	Sold	
9	Sold	
8	Sold	
7	\$13,576,000 @\$28,947	\$11,539,600 @\$24,605
6	Sold	
5	Sold	
3	Sold	
2	Sold	
1	Sold	

2B座 A: 3房連套房 914'/957'		
樓層	訂價	折實價15%
21	Sold	
20	\$34,224,000 @\$57,762	\$29,090,400 @\$48,397
19	\$34,020,000 @\$57,549	\$28,917,000 @\$48,216
18	\$34,020,000 @\$57,549	\$28,917,000 @\$48,216
17	\$33,617,000 @\$56,127	\$28,574,450 @\$47,858
16	\$33,417,000 @\$55,918	\$28,404,450 @\$47,681
15	Sold	
12	\$33,019,000 @\$55,503	\$28,066,150 @\$47,327
11	\$32,822,000 @\$55,297	\$27,898,700 @\$47,152
10	\$32,497,000 @\$54,957	\$27,622,450 @\$46,864
9	\$31,860,000 @\$53,292	\$27,081,000 @\$45,298
8	\$31,235,000 @\$52,638	\$26,549,750 @\$44,743
7	\$30,622,000 @\$51,998	\$26,028,700 @\$44,198
6	\$30,022,000 @\$51,371	\$25,518,700 @\$43,665
5	\$29,433,000 @\$50,755	\$25,018,050 @\$43,142
3	\$28,856,000 @\$50,153	\$24,527,600 @\$42,630
2	\$28,152,000 @\$49,417	\$23,929,200 @\$42,004
1	\$31,722,000 @\$52,870	\$26,963,700 @\$44,295

紅色為最高售價、最高平均呎價；藍色為最低售價、最低平均呎價

以上的物業資料只供參考，一切以發展商最新公布為準，如有任何資料錯漏本網頁不會承擔任何責任。