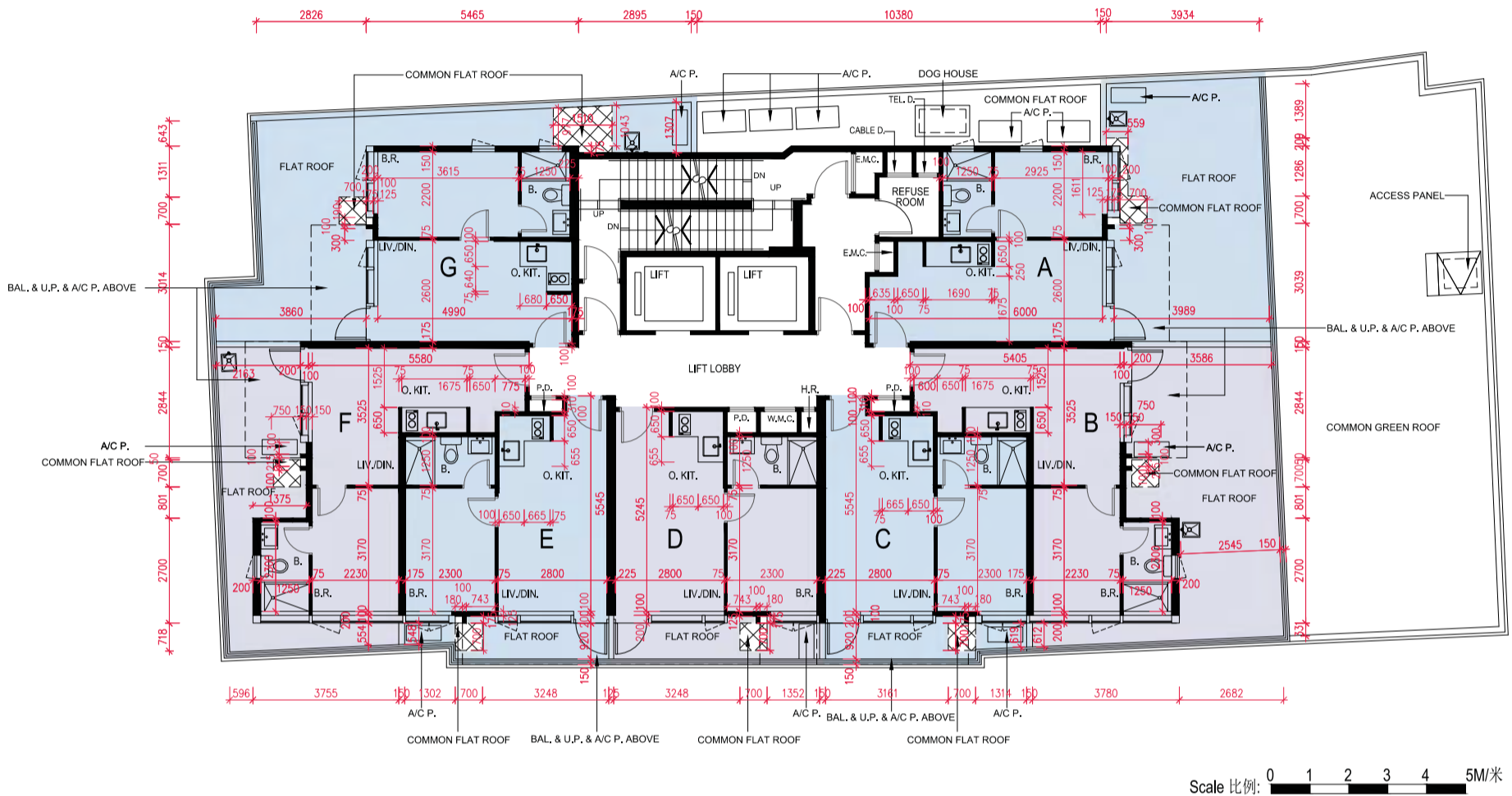
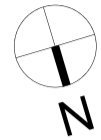


3/F FLOOR PLAN

三樓樓面平面圖



Each Residential Property 每個住宅物業	Floor 樓層	Unit 單位						
		A	B	C	D	E	F	G
Floor-to-Floor Height (mm) 層與層之間的高度 (毫米)	三樓	2750, 3150	2750, 2850, 3150	2750, 3150	2750, 3150	2750, 3150	2750, 2850, 3150	2750, 3150
Thickness of Floor Slabs (excluding plaster) (mm) 樓板(不包括灰泥)的厚度 (毫米)	3/F	150, 550*	150, 550*	150, 550*	150, 550*	150, 550*	150, 550*	150, 550*

The internal areas of the residential properties on the upper floors will generally be slightly larger than those on the lower floors because of the reducing thickness of the structural walls on the upper floors.

因住宅物業的較高樓層的結構牆的厚度遞減，較高樓層的內部面積，一般比較低樓層的內部面積稍大。

Notes:

- Please refer to page 21 of this Sales Brochure for legend of terms and abbreviations shown in the floor plans.
- *Denotes that the slab thickness includes 300mm and 400mm thick concrete fill.

備註:

- 平面圖中所使用之名詞及簡稱請參閱本售樓說明書第21頁。
- *標示該樓板的厚度包括300毫米及400毫米的混凝土填料。