

T2A C : 2房及儲物室 498'		
樓層	訂價	折實價22%
1	\$12,810,000 @\$25,723	\$9,991,800 @\$20,064
2	\$12,896,000 @\$25,896	\$10,058,880 @\$20,199
3	\$12,971,000 @\$26,046	\$10,117,380 @\$20,316
5	\$13,046,000 @\$26,197	\$10,175,880 @\$20,433
6	\$13,106,000 @\$26,317	\$10,222,680 @\$20,527
7	\$13,168,000 @\$26,442	\$10,271,040 @\$20,625
8	\$13,290,000 @\$26,687	\$10,366,200 @\$20,816
9	\$13,290,000 @\$26,687	\$10,366,200 @\$20,816
10	\$13,328,000 @\$26,763	\$10,395,840 @\$20,875

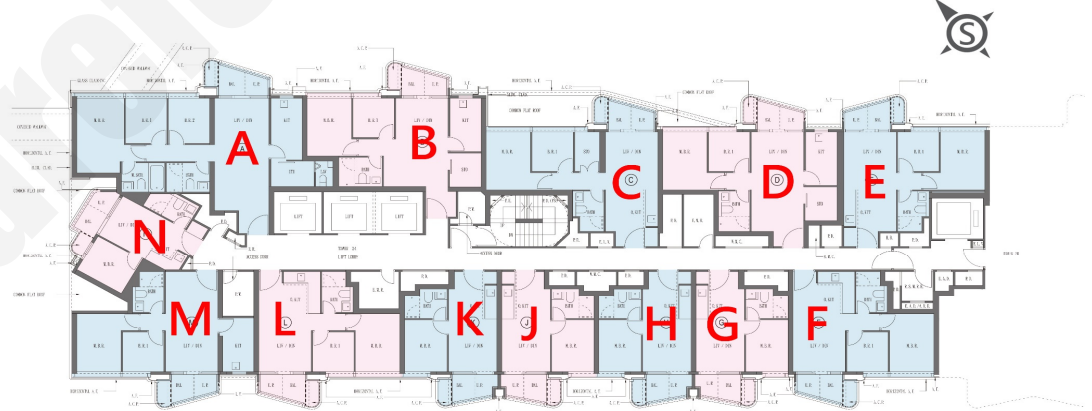
T2A G : 1房 306'		
樓層	訂價	折實價22%
1	\$7,544,000 @\$24,654	\$5,884,320 @\$19,230
2	\$7,592,000 @\$24,810	\$5,921,760 @\$19,352
3	\$7,623,000 @\$24,912	\$5,945,940 @\$19,431
5	\$7,653,000 @\$25,010	\$5,969,340 @\$19,508
6	\$7,683,000 @\$25,108	\$5,992,740 @\$19,584
7	\$7,714,000 @\$25,209	\$6,016,920 @\$19,663
8	\$7,767,000 @\$25,382	\$6,058,260 @\$19,798
9	\$7,767,000 @\$25,382	\$6,058,260 @\$19,798
10	\$7,776,000 @\$25,412	\$6,065,280 @\$19,821
11	\$7,793,000 @\$25,467	\$6,078,540 @\$19,865
12	\$7,810,000 @\$25,523	\$6,091,800 @\$19,908
15	\$7,824,000 @\$25,569	\$6,102,720 @\$19,944
16	\$7,839,000 @\$25,618	\$6,114,420 @\$19,982
17	\$7,877,000 @\$25,742	\$6,144,060 @\$20,079
18	\$7,941,000 @\$25,951	\$6,193,980 @\$20,242
19	\$7,941,000 @\$25,951	\$6,193,980 @\$20,242
20	\$7,958,000 @\$26,007	\$6,207,240 @\$20,285
21	\$7,976,000 @\$26,065	\$6,221,280 @\$20,331
22	\$7,990,000 @\$26,111	\$6,232,200 @\$20,367
23	\$8,006,000 @\$26,163	\$6,244,680 @\$20,407
25	\$8,024,000 @\$26,222	\$6,258,720 @\$20,453
26	\$8,038,000 @\$26,268	\$6,269,640 @\$20,489
27	\$8,078,000 @\$26,399	\$6,300,840 @\$20,991

T2A L : 2房 430'		
樓層	訂價	折實價22%
1	\$10,417,000 @\$24,226	\$8,125,260 @\$18,896
2	\$10,458,000 @\$24,321	\$8,157,240 @\$18,970
3	\$10,484,000 @\$24,381	\$8,177,520 @\$19,017
5	\$10,508,000 @\$24,437	\$8,196,240 @\$19,061
6	\$10,520,000 @\$24,465	\$8,205,600 @\$19,083
7	\$10,544,000 @\$24,521	\$8,224,320 @\$19,126
8	\$10,600,000 @\$24,651	\$8,268,000 @\$19,228
9	\$10,600,000 @\$24,651	\$8,268,000 @\$19,228
10	\$10,624,000 @\$24,707	\$8,286,720 @\$19,271
11	\$10,645,000 @\$24,756	\$8,303,100 @\$19,310
12	\$10,667,000 @\$24,807	\$8,320,260 @\$19,349
15	\$10,690,000 @\$24,860	\$8,338,200 @\$19,391
16	\$10,711,000 @\$24,909	\$8,354,580 @\$19,429
17	\$10,741,000 @\$24,979	\$8,377,980 @\$19,484
18	\$10,852,000 @\$25,237	\$8,464,560 @\$19,685
19	\$10,852,000 @\$25,237	\$8,464,560 @\$19,685
20	\$10,866,000 @\$25,270	\$8,475,480 @\$19,710
21	\$10,886,000 @\$25,316	\$8,491,080 @\$19,747
22	\$10,901,000 @\$25,351	\$8,502,780 @\$19,774
23	\$10,917,000 @\$25,388	\$8,515,260 @\$19,803
25	\$10,935,000 @\$25,430	\$8,529,300 @\$19,836
26	\$10,952,000 @\$25,470	\$8,542,560 @\$19,866
27	\$10,994,000 @\$25,567	\$8,575,320 @\$19,943
28	\$11,123,000 @\$25,867	\$8,675,940 @\$20,177
29	\$11,123,000 @\$25,867	\$8,675,940 @\$20,177
30	\$11,140,000 @\$25,907	\$8,689,200 @\$20,207
31	\$11,156,000 @\$25,944	\$8,701,680 @\$20,236
32	\$11,325,000 @\$26,337	\$8,833,500 @\$20,543
33	\$11,395,000 @\$26,500	\$8,888,100 @\$20,670
35	\$11,427,000 @\$26,574	\$8,913,060 @\$20,728

T2A M : 2房 481'		
樓層	訂價	折實價22%
1	\$11,834,000 @\$24,603	\$9,230,520 @\$19,190
2	\$11,882,000 @\$24,703	\$9,267,960 @\$19,268
3	\$11,900,000 @\$24,740	\$9,282,000 @\$19,297
5	\$11,918,000 @\$24,778	\$9,296,040 @\$19,326
6	\$11,943,000 @\$24,830	\$9,315,540 @\$19,367
7	\$11,966,000 @\$24,877	\$9,333,480 @\$19,404
8	\$12,039,000 @\$25,029	\$9,390,420 @\$19,523
9	\$12,039,000 @\$25,029	\$9,390,420 @\$19,523
10	\$12,065,000 @\$25,083	\$9,410,700 @\$19,565
11	\$12,089,000 @\$25,133	\$9,429,420 @\$19,604
12	\$12,115,000 @\$25,187	\$9,449,700 @\$19,646
15	\$12,140,000 @\$25,239	\$9,469,200 @\$19,686
16	\$12,167,000 @\$25,295	\$9,490,260 @\$19,730
17	\$12,214,000 @\$25,393	\$9,526,920 @\$19,806
18	\$12,299,000 @\$25,570	\$9,593,220 @\$19,944
19	\$12,299,000 @\$25,570	\$9,593,220 @\$19,944
20	\$12,319,000 @\$25,611	\$9,608,820 @\$19,977
21	\$12,339,000 @\$25,653	\$9,624,420 @\$20,009
22	\$12,359,000 @\$25,694	\$9,640,020 @\$20,042
23	\$12,382,000 @\$25,742	\$9,657,960 @\$20,079
25	\$12,401,000 @\$25,782	\$9,672,780 @\$20,110
26	\$12,430,000 @\$25,842	\$9,695,400 @\$20,157
27	\$12,477,000 @\$25,940	\$9,732,060 @\$20,233
28	\$12,586,000 @\$26,166	\$9,817,080 @\$20,410
29	\$12,586,000 @\$26,166	\$9,817,080 @\$20,410
30	\$12,606,000 @\$26,208	\$9,832,680 @\$20,442
31	\$12,625,000 @\$26,247	\$9,847,500 @\$20,473

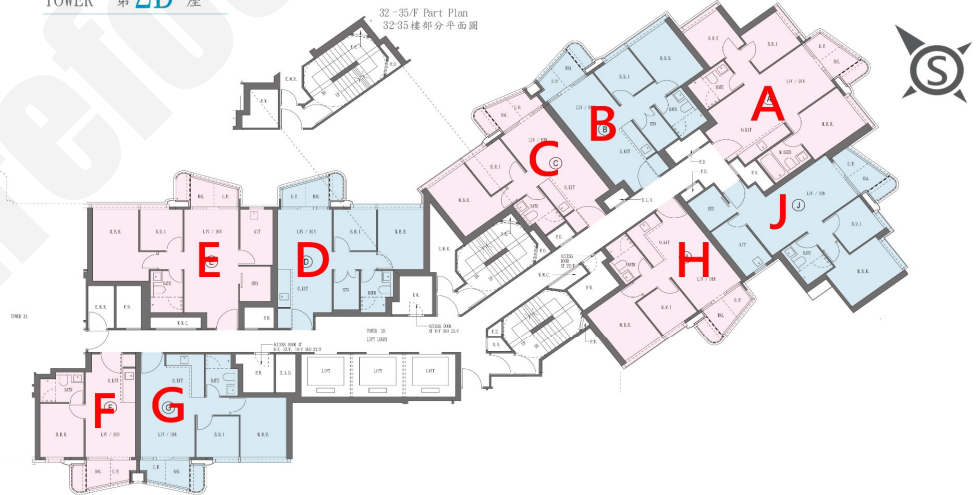
T2B C : 2房 450'		
樓層	訂價	折實價22%
1	\$11,574,000 @\$25,720	\$9,027,720 @\$20,062
2	\$11,650,000 @\$25,889	\$9,087,000 @\$20,193
3	\$11,718,000 @\$26,040	\$9,140,040 @\$20,311
5	\$11,774,000 @\$26,164	\$9,183,720 @\$20,408
6	\$11,832,000 @\$26,293	\$9,228,960 @\$20,509
7	\$11,892,000 @\$26,427	\$9,275,760 @\$20,613
8	\$12,003,000 @\$26,673	\$9,362,340 @\$20,805
9	\$12,003,000 @\$26,673	\$9,362,340 @\$20,805
10	\$12,037,000 @\$26,749	\$9,388,860 @\$20,864
11	\$12,073,000 @\$26,829	\$9,416,940 @\$20,927
12	\$12,107,000 @\$26,904	\$9,443,460 @\$20,985
15	\$12,144,000 @\$26,987	\$9,472,320 @\$21,050

T2B E : 2房及儲物室 553'		
樓層	訂價	折實價22%
1	\$13,977,000 @\$25,275	\$10,902,060 @\$19,714
2	\$14,075,000 @\$25,452	\$10,978,500 @\$19,853
3	\$14,159,000 @\$25,604	\$11,044,020 @\$19,971
5	\$14,226,000 @\$25,725	\$11,096,280 @\$20,066
6	\$14,298,000 @\$25,855	\$11,152,440 @\$20,167
7	\$14,379,000 @\$26,002	\$11,215,620 @\$20,281
8	\$14,540,000 @\$26,293	\$11,341,200 @\$20,508
9	\$14,540,000 @\$26,293	\$11,341,200 @\$20,508
10	\$14,583,000 @\$26,371	\$11,374,740 @\$20,569
11	\$14,627,000 @\$26,450	\$11,409,060 @\$20,631
12	\$14,672,000 @\$26,532	\$11,444,160 @\$20,695
15	\$14,716,000 @\$26,611	\$11,478,480 @\$20,757
16	\$14,760,000 @\$26,691	\$11,512,800 @\$20,819



紅色為最高售價、最高平均呎價；藍色為最低售價、最低平均呎價

TOWER 第2B座



T2B F: 1房 307'		
樓層	訂價	折實價22%
1	\$7,409,000 @\$24,134	\$5,779,020 @\$18,824
2	\$7,450,000 @\$24,267	\$5,811,000 @\$18,928
3	\$7,471,000 @\$24,336	\$5,827,380 @\$18,982
5	\$7,517,000 @\$24,485	\$5,863,260 @\$19,099
6	\$7,540,000 @\$24,560	\$5,881,200 @\$19,157
7	\$7,568,000 @\$24,651	\$5,903,040 @\$19,228
8	\$7,624,000 @\$24,834	\$5,946,720 @\$19,370
9	\$7,624,000 @\$24,834	\$5,946,720 @\$19,370
10	\$7,640,000 @\$24,886	\$5,959,200 @\$19,411
11	\$7,654,000 @\$24,932	\$5,970,120 @\$19,447
12	\$7,669,000 @\$24,980	\$5,981,820 @\$19,485
15	\$7,685,000 @\$25,033	\$5,994,300 @\$19,525
16	\$7,702,000 @\$25,088	\$6,007,560 @\$19,569
17	\$7,729,000 @\$25,176	\$6,028,620 @\$19,637
18	\$7,803,000 @\$25,417	\$6,086,340 @\$19,825
19	\$7,803,000 @\$25,417	\$6,086,340 @\$19,825
20	\$7,819,000 @\$25,469	\$6,098,820 @\$19,866
21	\$7,833,000 @\$25,515	\$6,109,740 @\$19,901
22	\$7,847,000 @\$25,560	\$6,120,660 @\$19,937
23	\$7,864,000 @\$25,616	\$6,133,920 @\$19,980
25	\$7,881,000 @\$25,671	\$6,147,180 @\$20,023
26	\$7,899,000 @\$25,730	\$6,161,220 @\$20,069
27	\$7,935,000 @\$25,847	\$6,189,300 @\$20,161
28	\$8,026,000 @\$26,143	\$6,260,280 @\$20,392
29	\$8,026,000 @\$26,143	\$6,260,280 @\$20,392
30	\$8,040,000 @\$26,189	\$6,271,200 @\$20,427
31	\$8,057,000 @\$26,244	\$6,284,460 @\$20,471
32	\$8,178,000 @\$26,638	\$6,378,840 @\$20,778
33	\$8,230,000 @\$26,808	\$6,419,400 @\$20,910
35	\$8,253,000 @\$26,883	\$6,437,340 @\$20,969

T2B G: 2房 432'		
樓層	訂價	折實價22%
1	\$10,177,000 @\$23,558	\$7,938,060 @\$18,375
2	\$10,238,000 @\$23,699	\$7,985,640 @\$18,485
3	\$10,272,000 @\$23,778	\$8,012,160 @\$18,547
5	\$10,290,000 @\$23,819	\$8,026,200 @\$18,579
6	\$10,310,000 @\$23,866	\$8,041,800 @\$18,615
7	\$10,345,000 @\$23,947	\$8,069,100 @\$18,678
8	\$10,423,000 @\$24,127	\$8,129,940 @\$18,819
9	\$10,423,000 @\$24,127	\$8,129,940 @\$18,819
10	\$10,445,000 @\$24,178	\$8,147,100 @\$18,859
11	\$10,467,000 @\$24,229	\$8,164,260 @\$18,899
12	\$10,489,000 @\$24,280	\$8,181,420 @\$18,938
15	\$10,512,000 @\$24,333	\$8,199,360 @\$18,980
16	\$10,533,000 @\$24,382	\$8,215,740 @\$19,018
17	\$10,555,000 @\$24,433	\$8,232,900 @\$19,058
18	\$10,671,000 @\$24,701	\$8,323,380 @\$19,267
19	\$10,671,000 @\$24,701	\$8,323,380 @\$19,267
20	\$10,694,000 @\$24,755	\$8,341,320 @\$19,309
21	\$10,713,000 @\$24,799	\$8,356,140 @\$19,343
22	\$10,735,000 @\$24,850	\$8,373,300 @\$19,383
23	\$10,757,000 @\$24,900	\$8,390,460 @\$19,422
25	\$10,780,000 @\$24,954	\$8,408,400 @\$19,464
26	\$10,803,000 @\$25,007	\$8,426,340 @\$19,505
27	\$10,851,000 @\$25,118	\$8,463,780 @\$19,592
28	\$10,999,000 @\$25,461	\$8,579,220 @\$19,859
29	\$10,999,000 @\$25,461	\$8,579,220 @\$19,859
30	\$11,021,000 @\$25,512	\$8,596,380 @\$19,899
31	\$11,046,000 @\$25,569	\$8,615,880 @\$19,944
32	\$11,216,000 @\$25,963	\$8,748,480 @\$20,251
33	\$11,284,000 @\$26,120	\$8,801,520 @\$20,374
35	\$11,319,000 @\$26,201	\$8,828,820 @\$20,437

T2B A: 3房連套房 586'		
樓層	訂價	折實價22%
2	\$17,270,000 @\$29,471	\$13,470,600 @\$22,987
3	\$17,562,000 @\$29,969	\$13,698,360 @\$23,376
9	\$18,218,000 @\$31,089	\$14,210,040 @\$24,249
10	\$18,269,000 @\$31,176	\$14,249,820 @\$24,317
11	\$18,320,000 @\$31,263	\$14,289,600 @\$24,385

T2B H: 2房 431'		
樓層	訂價	折實價22%
2	\$9,990,000 @\$23,179	\$7,792,200 @\$18,079
3	\$10,095,000 @\$23,422	\$7,874,100 @\$18,269
5	\$10,185,000 @\$23,631	\$7,944,300 @\$18,432
6	\$10,245,000 @\$23,770	\$7,991,100 @\$18,541
7	\$10,267,000 @\$23,821	\$8,008,260 @\$18,581
8	\$10,363,000 @\$24,044	\$8,083,140 @\$18,754
9	\$10,363,000 @\$24,044	\$8,083,140 @\$18,754
10	\$10,382,000 @\$24,088	\$8,097,960 @\$18,789
11	\$10,426,000 @\$24,190	\$8,132,280 @\$18,868
12	\$10,461,000 @\$24,271	\$8,159,580 @\$18,932
15	\$10,484,000 @\$24,325	\$8,177,520 @\$18,973
16	\$10,512,000 @\$24,390	\$8,199,360 @\$19,024
17	\$10,533,000 @\$24,439	\$8,215,740 @\$19,062
18	\$10,604,000 @\$24,603	\$8,271,120 @\$19,191
19	\$10,604,000 @\$24,603	\$8,271,120 @\$19,191
20	\$10,624,000 @\$24,650	\$8,286,720 @\$19,227
21	\$10,645,000 @\$24,698	\$8,303,100 @\$19,265
22	\$10,667,000 @\$24,749	\$8,320,260 @\$19,305
23	\$10,689,000 @\$24,800	\$8,337,420 @\$19,344
25	\$10,709,000 @\$24,847	\$8,353,020 @\$19,381
26	\$10,730,000 @\$24,896	\$8,369,400 @\$19,419
27	\$10,778,000 @\$25,007	\$8,406,840 @\$19,505
28	\$10,926,000 @\$25,350	\$8,522,280 @\$19,773
29	\$10,926,000 @\$25,350	\$8,522,280 @\$19,773
30	\$10,946,000 @\$25,397	\$8,537,880 @\$19,809
31	\$10,968,000 @\$25,448	\$8,555,040 @\$19,849
32	\$11,137,000 @\$25,840	\$8,686,860 @\$20,155
33	\$11,205,000 @\$25,998	\$8,739,900 @\$20,278
35	\$11,238,000 @\$26,074	\$8,765,640 @\$20,338

紅色為最高售價、最高平均呎價；藍色為最低售價、最低平均呎價