

兩後

價單1號

以最高6%折扣計算

制作日期: 2023-03-08

S: 開放式 294'

樓層	訂價	折實價6%
8	\$5,109,426 @\$17,379	\$4,802,860 @\$16,338
7	\$4,905,978 @\$16,687	\$4,611,619 @\$15,686
6	\$4,758,684 @\$16,186	\$4,473,163 @\$15,215
5	\$4,639,908 @\$15,782	\$4,361,514 @\$14,835

R: 2房 454'

樓層	訂價	折實價6%
8	\$7,600,414 @\$16,741	\$7,144,389 @\$15,737
7	\$7,276,712 @\$16,028	\$6,840,109 @\$15,066
6	\$7,058,338 @\$15,547	\$6,634,838 @\$14,614
5	\$6,882,186 @\$15,159	\$6,469,255 @\$14,249

Q: 2房 454'

樓層	訂價	折實價6%
8	\$7,716,184 @\$16,996	\$7,253,213 @\$15,976
7	\$7,387,488 @\$16,272	\$6,944,239 @\$15,296
6	\$7,165,936 @\$15,784	\$6,735,980 @\$14,837
5	\$6,986,606 @\$15,389	\$6,567,410 @\$14,466

P: 2房 454'

樓層	訂價	折實價6%
8	\$6,736,906 @\$14,839	\$6,332,692 @\$13,949
7	\$6,546,226 @\$14,419	\$6,153,452 @\$13,554
6	\$6,493,108 @\$14,302	\$6,103,522 @\$13,444
5	\$6,470,862 @\$14,253	\$6,082,610 @\$13,398

D: 1房 362'

樓層	訂價	折實價6%
8	\$6,152,552 @\$16,996	\$5,783,399 @\$15,976
7	\$5,890,464 @\$16,272	\$5,537,036 @\$15,296
6	\$5,713,808 @\$15,784	\$5,370,980 @\$14,837
5	\$5,570,818 @\$15,389	\$5,236,569 @\$14,466

C: 1房 362'

樓層	訂價	折實價6%
8	\$6,152,552 @\$16,996	\$5,783,399 @\$15,976
7	\$5,890,464 @\$16,272	\$5,537,036 @\$15,296
6	\$5,713,808 @\$15,784	\$5,370,980 @\$14,837
5	\$5,570,818 @\$15,389	\$5,236,569 @\$14,466



N: 1房 372'

樓層	訂價	折實價6%
8	\$5,564,004 @\$14,957	\$5,230,164 @\$14,060
7	\$5,466,168 @\$14,694	\$5,138,198 @\$13,812
6	\$5,419,668 @\$14,569	\$5,094,488 @\$13,695
5	\$5,398,464 @\$14,512	\$5,074,556 @\$13,641

M: 1房 372'

樓層	訂價	折實價6%
8	\$5,564,004 @\$14,957	\$5,230,164 @\$14,060
7	\$5,466,168 @\$14,694	\$5,138,198 @\$13,812
6	\$5,419,668 @\$14,569	\$5,094,488 @\$13,695
5	\$5,398,464 @\$14,512	\$5,074,556 @\$13,641

L: 1房 372'

樓層	訂價	折實價6%
8	\$5,564,004 @\$14,957	\$5,230,164 @\$14,060
7	\$5,466,168 @\$14,694	\$5,138,198 @\$13,812
6	\$5,419,668 @\$14,569	\$5,094,488 @\$13,695
5	\$5,398,464 @\$14,512	\$5,074,556 @\$13,641

B: 1房 372'

樓層	訂價	折實價6%
8	\$6,322,512 @\$16,996	\$5,943,161 @\$15,976
7	\$6,053,184 @\$16,272	\$5,689,993 @\$15,296
6	\$5,871,648 @\$15,784	\$5,519,349 @\$14,837
5	\$5,724,708 @\$15,389	\$5,381,226 @\$14,466

K: 1房 371'

樓層	訂價	折實價6%
8	\$5,530,126 @\$14,906	\$5,198,318 @\$14,012
7	\$5,433,295 @\$14,645	\$5,107,297 @\$13,766
6	\$5,387,291 @\$14,521	\$5,064,054 @\$13,650
5	\$5,366,886 @\$14,466	\$5,044,873 @\$13,598

J: 2房及書房 592'

樓層	訂價	折實價6%
8	\$8,778,768 @\$14,829	\$8,252,042 @\$13,939
7	\$8,530,128 @\$14,409	\$8,018,320 @\$13,544
6	\$8,460,864 @\$14,292	\$7,953,212 @\$13,434
5	\$8,431,856 @\$14,243	\$7,925,945 @\$13,388

H: 開放式 276'

樓層	訂價	折實價6%
8	\$4,327,404 @\$15,679	\$4,067,760 @\$14,738
7	\$4,246,260 @\$15,385	\$3,991,484 @\$14,462
6	\$4,219,212 @\$15,287	\$3,966,059 @\$14,370
5	\$4,211,484 @\$15,259	\$3,958,795 @\$14,343

A: 2房 454'

樓層	訂價	折實價6%
8	\$7,619,936 @\$16,784	\$7,162,740 @\$15,777
7	\$7,313,486 @\$16,109	\$6,874,677 @\$15,142
6	\$7,094,204 @\$15,626	\$6,668,552 @\$14,688
5	\$6,916,690 @\$15,235	\$6,501,689 @\$14,321

G: 2房 454'

樓層	訂價	折實價6%
8	\$6,906,248 @\$15,212	\$6,491,873 @\$14,299
7	\$6,781,852 @\$14,938	\$6,374,941 @\$14,042
6	\$6,743,262 @\$14,853	\$6,338,666 @\$13,962
5	\$6,735,090 @\$14,835	\$6,330,985 @\$13,945

G: 2房 475'

樓層	訂價	折實價6%
8	\$7,508,325 @\$15,807	\$7,057,826 @\$14,859
7	\$7,288,875 @\$15,345	\$6,851,543 @\$14,424
6	\$7,242,325 @\$15,247	\$6,807,786 @\$14,332
5	\$7,229,500 @\$15,220	\$6,795,730 @\$14,307

E: 3房連套房及儲物室 717'

樓層	訂價	折實價6%
8	\$12,186,132 @\$16,996	\$11,454,964 @\$15,976
7	\$11,667,024 @\$16,272	\$10,967,003 @\$15,296
6	\$11,317,128 @\$15,784	\$10,638,100 @\$14,837
5	\$11,033,913 @\$15,389	\$10,371,878 @\$14,466

紅色為最高售價、最高平均呎價；藍色為最低售價、最低平均呎價

Squarefoot

Squarefoot

Squarefoot

新盤價單表

柏瓏I

價單1號

以最高16%折扣計算

制作日期: 2022-04-21



3座A5: 2房 474'

樓層	訂價	折實價16%
15	\$10,644,000 @ \$22,456	\$8,940,960 @ \$18,863
12	\$10,601,000 @ \$22,365	\$8,904,840 @ \$18,787
11	\$10,558,000 @ \$22,274	\$8,868,720 @ \$18,710
10	\$10,517,000 @ \$22,188	\$8,834,280 @ \$18,638
9	\$10,474,000 @ \$22,097	\$8,798,160 @ \$18,562
8	\$10,474,000 @ \$22,097	\$8,798,160 @ \$18,562
7	\$10,389,000 @ \$21,918	\$8,726,760 @ \$18,411
6	\$10,348,000 @ \$21,831	\$8,692,320 @ \$18,338
5	\$10,327,000 @ \$21,787	\$8,674,680 @ \$18,301

3座A2: 3房連套房及儲物室 727'

樓層	訂價	折實價16%
15	\$15,612,000 @ \$21,475	\$13,114,080 @ \$18,039
12	\$15,550,000 @ \$21,389	\$13,062,000 @ \$17,967
11	\$15,489,000 @ \$21,305	\$13,010,760 @ \$17,897
10	\$15,427,000 @ \$21,220	\$12,958,680 @ \$17,825
9	\$15,367,000 @ \$21,138	\$12,908,280 @ \$17,756
8	\$15,367,000 @ \$21,138	\$12,908,280 @ \$17,756
7	\$15,245,000 @ \$20,970	\$12,805,800 @ \$17,615
6	\$15,186,000 @ \$20,889	\$12,756,240 @ \$17,546
5	\$15,156,000 @ \$20,847	\$12,731,040 @ \$17,512



紅色為最高售價、最高平均呎價；藍色為最低售價、最低平均呎價

以上的物業資料只供參考，一切以發展商最新公布為準，如有任何資料錯漏本網頁不會承擔任何責任。

Squarefoot

Squarefoot

Squarefoot

新盤價單表

柏瓏I

價單1號

以最高16%折扣計算
制作日期: 2022-04-21



5座B8 : 1房 354'		
樓層	訂價	折實價16%
16	\$7,967,000 @\$22,506	\$6,692,280 @ \$18,905
15	\$7,927,000 @\$22,393	\$6,658,680 @ \$18,810
12	\$7,887,000 @\$22,280	\$6,625,080 @ \$18,715
11	\$7,846,000 @\$22,164	\$6,590,640 @ \$18,618
10	\$7,807,000 @\$22,054	\$6,557,880 @ \$18,525
9	\$7,768,000 @\$21,944	\$6,525,120 @ \$18,433
8	\$7,768,000 @\$21,944	\$6,525,120 @ \$18,433
7	\$7,689,000 @\$21,720	\$6,458,760 @ \$18,245
6	\$7,651,000 @\$21,613	\$6,426,840 @ \$18,155
5	\$7,596,000 @\$21,458	\$6,380,640 @ \$18,024
3	\$7,543,000 @\$21,308	\$6,336,120 @ \$17,899
2	\$7,490,000 @\$21,158	\$6,291,600 @ \$17,773
1	\$7,437,000 @\$21,008	\$6,247,080 @ \$17,647



5座B7 : 2房 464'		
樓層	訂價	折實價16%
16	\$9,820,000 @\$21,164	\$8,248,800 @ \$17,778
15	\$9,771,000 @\$21,058	\$8,207,640 @ \$17,689
12	\$9,723,000 @\$20,955	\$8,167,320 @ \$17,602
11	\$9,674,000 @\$20,849	\$8,126,160 @ \$17,513
10	\$9,626,000 @\$20,746	\$8,085,840 @ \$17,426
9	\$9,579,000 @\$20,644	\$8,046,360 @ \$17,341
8	\$9,579,000 @\$20,644	\$8,046,360 @ \$17,341
7	\$9,483,000 @\$20,438	\$7,965,720 @ \$17,168
6	\$9,436,000 @\$20,336	\$7,926,240 @ \$17,082
5	\$9,370,000 @\$20,194	\$7,870,800 @ \$16,963
3	\$9,305,000 @\$20,054	\$7,816,200 @ \$16,845
2	\$9,240,000 @\$19,914	\$7,761,600 @ \$16,728
1	\$9,176,000 @\$19,776	\$7,707,840 @ \$16,612

5座B5 : 1房及儲物室 384'		
樓層	訂價	折實價16%
16	\$8,556,000 @\$22,281	\$7,187,040 @ \$18,716
15	\$8,514,000 @\$22,172	\$7,151,760 @ \$18,624
12	\$8,471,000 @\$22,060	\$7,115,640 @ \$18,530
11	\$8,430,000 @\$21,953	\$7,081,200 @ \$18,441
10	\$8,387,000 @\$21,841	\$7,045,080 @ \$18,347
9	\$8,345,000 @\$21,732	\$7,009,800 @ \$18,255
8	\$8,345,000 @\$21,732	\$7,009,800 @ \$18,255
7	\$8,263,000 @\$21,518	\$6,940,920 @ \$18,075
6	\$8,221,000 @\$21,409	\$6,905,640 @ \$17,983
5	\$8,164,000 @\$21,260	\$6,857,760 @ \$17,859
3	\$8,108,000 @\$21,115	\$6,810,720 @ \$17,736
2	\$8,051,000 @\$20,966	\$6,762,840 @ \$17,612
1	\$7,995,000 @\$20,820	\$6,715,800 @ \$17,489

5座B3 : 1房及儲物室 382'		
樓層	訂價	折實價16%
16	\$8,492,000 @\$22,230	\$7,133,280 @ \$18,674
15	\$8,449,000 @\$22,118	\$7,097,160 @ \$18,579
12	\$8,407,000 @\$22,008	\$7,061,880 @ \$18,487
11	\$8,365,000 @\$21,898	\$7,026,600 @ \$18,394
10	\$8,324,000 @\$21,791	\$6,992,160 @ \$18,304
9	\$8,282,000 @\$21,681	\$6,956,880 @ \$18,212
8	\$8,282,000 @\$21,681	\$6,956,880 @ \$18,212
7	\$8,200,000 @\$21,466	\$6,888,000 @ \$18,031
6	\$8,160,000 @\$21,361	\$6,854,400 @ \$17,943
5	\$8,102,000 @\$21,209	\$6,805,680 @ \$17,816
3	\$8,046,000 @\$21,063	\$6,758,640 @ \$17,693
2	\$7,990,000 @\$20,916	\$6,711,600 @ \$17,570
1	\$7,935,000 @\$20,772	\$6,665,400 @ \$17,449

5座B2 : 2房及儲物室 547/557'		
樓層	訂價	折實價16%
16	\$11,399,000 @\$20,839	\$9,575,160 @ \$17,505
15	\$11,370,000 @\$20,786	\$9,550,800 @ \$17,460
12	\$11,343,000 @\$20,737	\$9,528,120 @ \$17,419
11	\$11,314,000 @\$20,684	\$9,503,760 @ \$17,374
10	\$11,287,000 @\$20,634	\$9,481,080 @ \$17,333
9	\$11,260,000 @\$20,585	\$9,458,400 @ \$17,291
8	\$11,260,000 @\$20,585	\$9,458,400 @ \$17,291
7	\$11,204,000 @\$20,483	\$9,411,360 @ \$17,205
6	\$11,176,000 @\$20,431	\$9,387,840 @ \$17,162
5	\$11,132,000 @\$20,351	\$9,350,880 @ \$17,095
3	\$11,088,000 @\$20,271	\$9,313,920 @ \$17,027
2	\$11,044,000 @\$20,190	\$9,276,960 @ \$16,960
1	\$11,000,000 @\$20,108	\$9,240,000 @ \$16,890

5座B6 : 2房 464'		
樓層	訂價	折實價16%
16	\$9,800,000 @\$21,121	\$8,232,000 @ \$17,741
15	\$9,751,000 @\$21,015	\$8,190,840 @ \$17,653
12	\$9,702,000 @\$20,909	\$8,149,680 @ \$17,564
11	\$9,655,000 @\$20,808	\$8,110,200 @ \$17,479
10	\$9,607,000 @\$20,705	\$8,069,880 @ \$17,392
9	\$9,558,000 @\$20,599	\$8,028,720 @ \$17,303
8	\$9,558,000 @\$20,599	\$8,028,720 @ \$17,303
7	\$9,464,000 @\$20,397	\$7,949,760 @ \$17,133
6	\$9,417,000 @\$20,295	\$7,910,280 @ \$17,048
5	\$9,351,000 @\$20,153	\$7,854,840 @ \$16,929
3	\$9,287,000 @\$20,015	\$7,801,080 @ \$16,813
2	\$9,223,000 @\$19,877	\$7,747,320 @ \$16,697
1	\$9,158,000 @\$19,737	\$7,692,720 @ \$16,579

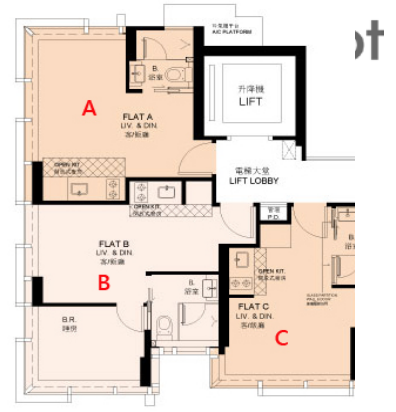
5座A5 : 3房連套房及工人套房 762'		
樓層	訂價	折實價16%
15	\$16,660,000 @\$21,864	\$13,994,400 @ \$18,365
12	\$16,593,000 @\$21,776	\$13,938,120 @ \$18,291
11	\$16,526,000 @\$21,688	\$13,881,840 @ \$18,218
10	\$16,461,000 @\$21,602	\$13,827,240 @ \$18,146
9	\$16,395,000 @\$21,516	\$13,771,800 @ \$18,073
8	\$16,395,000 @\$21,516	\$13,771,800 @ \$18,073
7	\$16,264,000 @\$21,344	\$13,661,760 @ \$17,929
6	\$16,199,000 @\$21,259	\$13,607,160 @ \$17,857
5	\$16,167,000 @\$21,217	\$13,580,280 @ \$17,822
5	\$8,164,000 @\$21,260	\$6,857,760 @ \$17,859

紅色為最高售價、最高平均呎價；藍色為最低售價、最低平均呎價

Squarefoot

Squarefoot

Squarefoot



Squarefoot

Squarefoot

Squarefoot

