

新盤價單表

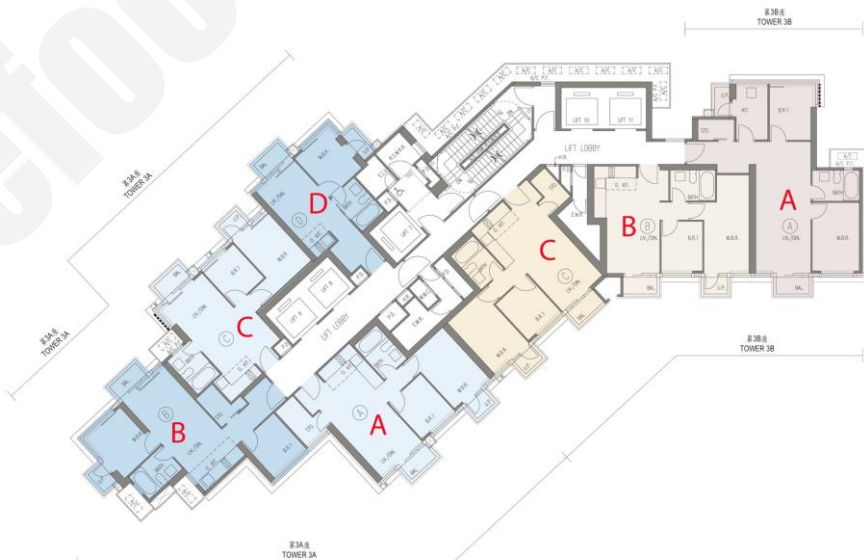
滙環

價單1號

以最高9%折扣計算
制作日期: 2024-03-26



T3A A : 2房 577'		
樓層	訂價	折實價9%
10	\$14,828,200 @\$25,699	\$13,493,662 @\$23,386
11	\$14,902,300 @\$25,827	\$13,561,093 @\$23,503
12	\$14,976,800 @\$25,956	\$13,628,888 @\$23,620
15	\$15,051,700 @\$26,086	\$13,697,047 @\$23,738
16	\$15,126,900 @\$26,216	\$13,765,479 @\$23,857
17	\$15,202,600 @\$26,348	\$13,834,366 @\$23,976
18	\$15,354,600 @\$26,611	\$13,972,686 @\$24,216
19	\$15,431,400 @\$26,744	\$14,042,574 @\$24,337
20	\$15,508,500 @\$26,878	\$14,112,735 @\$24,459
21	\$15,586,000 @\$27,012	\$14,183,260 @\$24,581
22	\$15,663,900 @\$27,147	\$14,254,149 @\$24,704
23	\$15,742,300 @\$27,283	\$14,325,493 @\$24,828
25	\$15,821,000 @\$27,419	\$14,397,110 @\$24,952
26	\$15,900,200 @\$27,557	\$14,469,182 @\$25,077
27	\$15,979,600 @\$27,694	\$14,541,436 @\$25,202
28	\$16,139,400 @\$27,971	\$14,686,854 @\$25,454
29	\$16,220,200 @\$28,111	\$14,760,382 @\$25,581
30	\$16,301,200 @\$28,252	\$14,834,092 @\$25,709
31	\$16,382,700 @\$28,393	\$14,908,257 @\$25,838
32	\$16,464,600 @\$28,535	\$14,982,786 @\$25,967
33	\$16,546,900 @\$28,677	\$15,057,679 @\$26,096
T3B A : 2房 656/659'		
樓層	訂價	折實價9%
10	\$17,193,800 @\$26,210	\$15,646,358 @\$23,851
11	\$17,279,700 @\$26,341	\$15,724,527 @\$23,970
12	\$17,366,200 @\$26,473	\$15,803,242 @\$24,090
15	\$17,453,000 @\$26,605	\$15,882,230 @\$24,211
16	\$17,540,300 @\$26,738	\$15,961,673 @\$24,332
17	\$17,627,900 @\$26,872	\$16,041,389 @\$24,453
18	\$17,804,300 @\$27,141	\$16,201,913 @\$24,698
19	\$17,893,300 @\$27,276	\$16,282,903 @\$24,821
20	\$17,982,700 @\$27,413	\$16,364,257 @\$24,946
21	\$18,155,300 @\$27,550	\$16,521,323 @\$25,070
22	\$18,246,000 @\$27,687	\$16,603,860 @\$25,196
23	\$18,337,300 @\$27,826	\$16,686,943 @\$25,322
25	\$18,428,900 @\$27,965	\$16,770,299 @\$25,448
26	\$18,521,200 @\$28,105	\$16,854,292 @\$25,576
27	\$18,613,700 @\$28,245	\$16,938,467 @\$25,703
28	\$18,799,800 @\$28,528	\$17,107,818 @\$25,960
29	\$18,893,800 @\$28,670	\$17,193,358 @\$26,090
30	\$18,988,400 @\$28,814	\$17,279,444 @\$26,221
31	\$19,083,300 @\$28,958	\$17,365,803 @\$26,352
32	\$19,178,700 @\$29,103	\$17,452,617 @\$26,483
33	\$19,274,500 @\$29,248	\$17,539,795 @\$26,616



紅色為最高售價、最高平均呎價；藍色為最低售價、最低平均呎價

以上的物業資料只供參考，一切以發展商最新公布為準，如有任何資料錯漏本網頁不會承擔任何責任。

新盤價單表

滙環

價單1號

以最高9%折扣計算
制作日期: 2024-03-26



T5 B : 2房 564/567'		
樓層	訂價	折實價9%
10	\$17,351,000 @\$30,601	\$15,789,410 @\$27,847
11	\$17,455,200 @\$30,785	\$15,884,232 @\$28,015
12	\$17,559,900 @\$30,970	\$15,979,509 @\$28,183
15	\$17,665,300 @\$31,156	\$16,075,423 @\$28,352
16	\$17,771,300 @\$31,343	\$16,171,883 @\$28,522
17	\$17,877,900 @\$31,531	\$16,268,889 @\$28,693
18	\$18,074,600 @\$31,878	\$16,447,886 @\$29,009
19	\$18,183,000 @\$32,069	\$16,546,530 @\$29,183
20	\$18,292,200 @\$32,261	\$16,645,902 @\$29,358
21	\$18,304,500 @\$32,455	\$16,657,095 @\$29,534
22	\$18,414,400 @\$32,650	\$16,757,104 @\$29,711
23	\$18,524,800 @\$32,845	\$16,857,568 @\$29,889
25	\$18,635,900 @\$33,042	\$16,958,669 @\$30,069
26	\$18,747,800 @\$33,241	\$17,060,498 @\$30,249
27	\$18,860,300 @\$33,440	\$17,162,873 @\$30,431

T5 C : 2房 619/620'		
樓層	訂價	折實價9%
10	\$18,192,300 @\$29,390	\$16,554,993 @\$26,745
11	\$18,301,400 @\$29,566	\$16,654,274 @\$26,905
12	\$18,411,300 @\$29,744	\$16,754,283 @\$27,067
15	\$18,521,700 @\$29,922	\$16,854,747 @\$27,229
16	\$18,632,800 @\$30,101	\$16,955,848 @\$27,392
17	\$18,744,600 @\$30,282	\$17,057,586 @\$27,557
18	\$18,950,800 @\$30,615	\$17,245,228 @\$27,860
19	\$19,064,500 @\$30,799	\$17,348,695 @\$28,027
20	\$19,178,900 @\$30,984	\$17,452,799 @\$28,195
21	\$19,325,200 @\$31,170	\$17,585,932 @\$28,364
22	\$19,441,000 @\$31,356	\$17,691,310 @\$28,534
23	\$19,557,700 @\$31,545	\$17,797,507 @\$28,706
25	\$19,675,000 @\$31,734	\$17,904,250 @\$28,878
26	\$19,793,200 @\$31,925	\$18,011,812 @\$29,051
27	\$19,911,900 @\$32,116	\$18,119,829 @\$29,226
28	\$20,130,900 @\$32,469	\$18,319,119 @\$29,547
29	\$20,251,700 @\$32,664	\$18,429,047 @\$29,724
30	\$20,373,200 @\$32,860	\$18,539,612 @\$29,903
31	\$20,495,500 @\$33,057	\$18,650,905 @\$30,082
32	\$20,618,400 @\$33,255	\$18,762,744 @\$30,262
33	\$20,742,200 @\$33,455	\$18,875,402 @\$30,444



紅色為最高售價、最高平均呎價；藍色為最低售價、最低平均呎價

以上的物業資料只供參考，一切以發展商最新公布為準，如有任何資料錯漏本網頁不會承擔任何責任。