

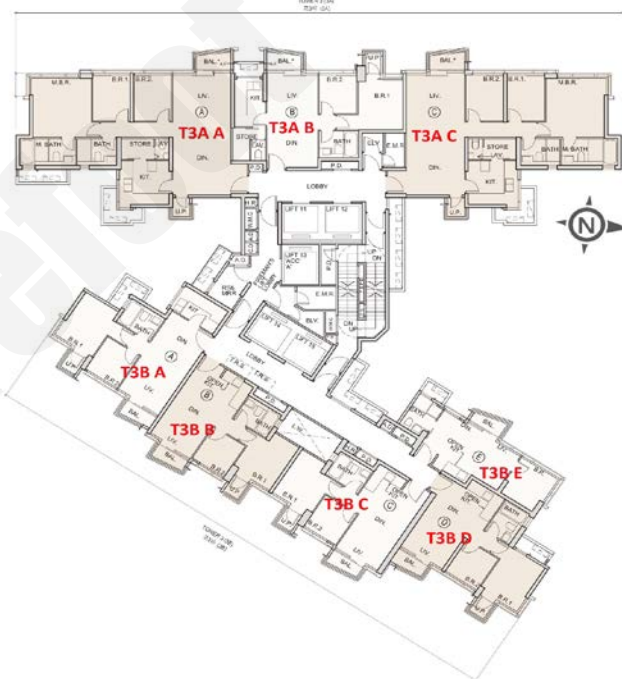
新盤價單表

瑜一B期

價單1號

以最高15%折扣計算

制作日期: 2023-03-16



3A座C: 3房連套房及工人套房 941'

樓層	訂價	折實價15%
18	\$30,679,000 @\$32,603	\$26,077,150 @\$27,712
17	\$30,376,000 @\$32,281	\$25,819,600 @\$27,438
16	\$30,224,000 @\$32,119	\$25,690,400 @\$27,301
15	\$30,075,000 @\$31,961	\$25,563,750 @\$27,167
12	\$29,836,000 @\$31,707	\$25,360,600 @\$26,951
11	\$29,599,000 @\$31,455	\$25,159,150 @\$26,737
10	\$29,018,000 @\$30,837	\$24,665,300 @\$26,212
6	\$26,555,000 @\$28,220	\$22,571,750 @\$23,987
5	\$25,905,000 @\$27,529	\$22,019,250 @\$23,400
3	\$25,273,000 @\$26,858	\$21,482,050 @\$22,829
2	\$24,652,000 @\$26,198	\$20,954,200 @\$22,268

3A座B: 2房及工人套房 576'

樓層	訂價	折實價15%
15	\$18,231,000 @\$31,651	\$15,496,350 @\$26,903
12	\$18,086,000 @\$31,399	\$15,373,100 @\$26,689
11	\$17,943,000 @\$31,151	\$15,251,550 @\$26,478
10	\$17,591,000 @\$30,540	\$14,952,350 @\$25,959
6	\$16,092,000 @\$27,938	\$13,678,200 @\$23,747
5	\$15,700,000 @\$27,257	\$13,345,000 @\$23,168
3	\$15,317,000 @\$26,592	\$13,019,450 @\$22,603
2	\$14,943,800 @\$25,944	\$12,702,230 @\$22,052

3B座E: 1房 336'

樓層	訂價	折實價15%
25	\$9,363,000 @\$27,866	\$7,958,550 @\$23,686
23	\$9,345,000 @\$27,813	\$7,943,250 @\$23,641
22	\$9,327,000 @\$27,759	\$7,927,950 @\$23,595
21	\$9,308,000 @\$27,702	\$7,911,800 @\$23,547
20	\$9,289,000 @\$27,646	\$7,895,650 @\$23,499
19	\$9,257,000 @\$27,551	\$7,868,450 @\$23,418

3B座A: 2房 519'

樓層	訂價	折實價5%
11	\$15,449,000 @\$29,767	\$13,131,650 @\$25,302
10	\$15,386,000 @\$29,645	\$13,078,100 @\$25,199
9	\$15,325,000 @\$29,528	\$13,026,250 @\$25,099
8	\$15,325,000 @\$29,528	\$13,026,250 @\$25,099
7	\$15,173,000 @\$29,235	\$12,897,050 @\$24,850
6	\$15,098,000 @\$29,091	\$12,833,300 @\$24,727
5	\$15,023,000 @\$28,946	\$12,769,550 @\$24,604
3	\$14,949,000 @\$28,803	\$12,706,650 @\$24,483
2	\$14,873,000 @\$28,657	\$12,642,050 @\$24,358

3B座D: 2房 471/477'

樓層	訂價	折實價15%
20	\$14,373,000 @\$30,516	\$12,217,050 @\$25,938
19	\$14,259,000 @\$30,274	\$12,120,150 @\$25,733
18	\$14,259,000 @\$30,274	\$12,120,150 @\$25,733
17	\$14,118,000 @\$29,597	\$12,000,300 @\$25,158
16	\$14,048,000 @\$29,451	\$11,940,800 @\$25,033
15	\$13,978,000 @\$29,304	\$11,881,300 @\$24,908
12	\$13,704,000 @\$28,730	\$11,648,400 @\$24,420
11	\$13,636,000 @\$28,587	\$11,590,600 @\$24,299
10	\$13,568,000 @\$28,444	\$11,532,800 @\$24,178
9	\$13,500,000 @\$28,302	\$11,475,000 @\$24,057
8	\$13,368,000 @\$28,025	\$11,362,800 @\$23,821
7	\$13,170,000 @\$27,610	\$11,194,500 @\$23,469
6	\$12,975,000 @\$27,201	\$11,028,750 @\$23,121
5	\$12,783,000 @\$26,799	\$10,865,550 @\$22,779
3	\$12,593,000 @\$26,400	\$10,704,050 @\$22,440
2	\$12,261,800 @\$25,706	\$10,422,530 @\$21,850

紅色為最高售價、最高平均呎價；藍色為最低售價、最低平均呎價