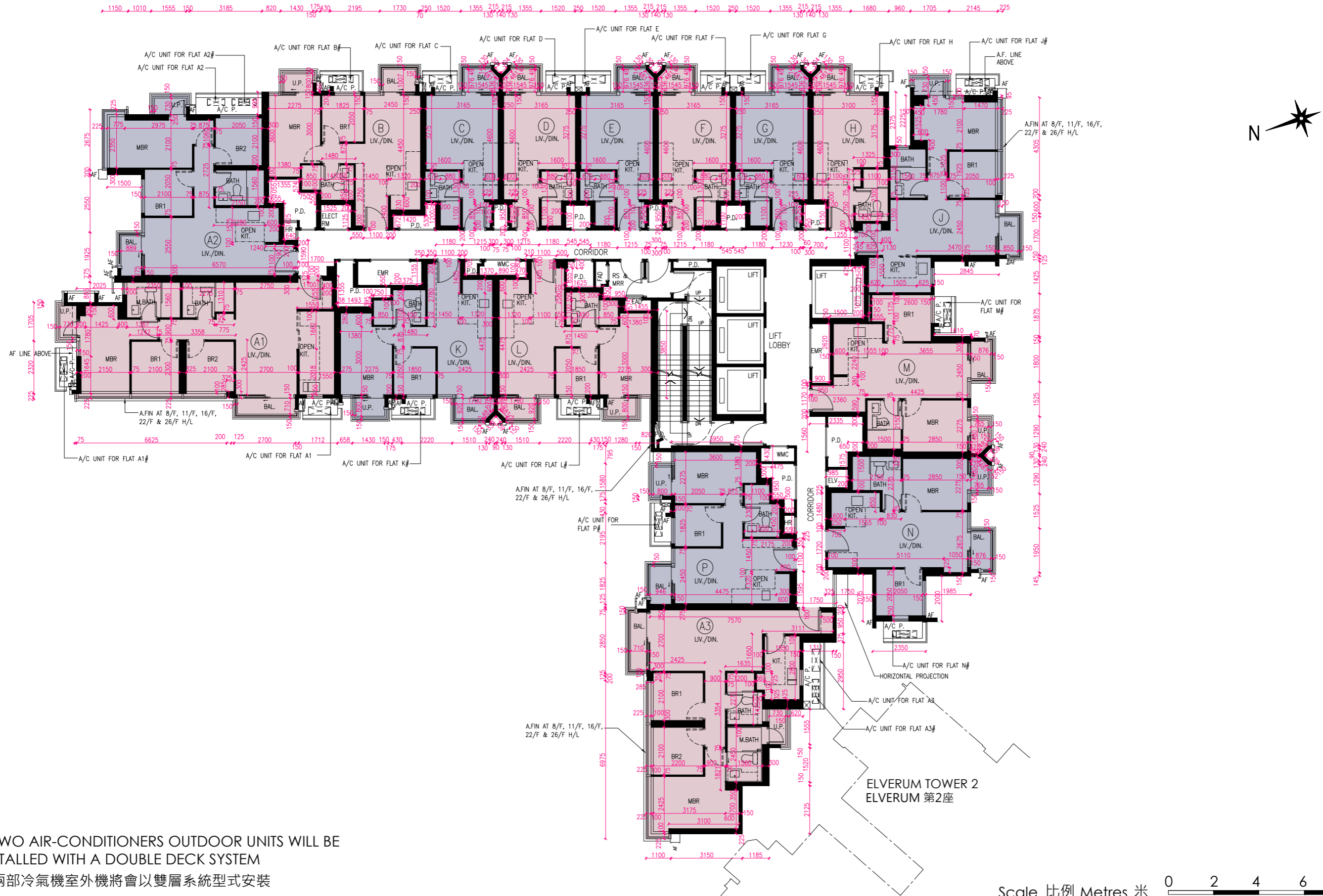


# FLOOR PLANS OF RESIDENTIAL PROPERTIES IN THE PHASE 期數的住宅物業的樓面平面圖

ELVERUM TOWER 1 6/F-12/F, 15/F-18/F, 20/F-23/F & 25/F-28/F | ELVERUM 第1座 6樓至12樓、15樓至18樓、20樓至23樓及25樓至28樓



# TWO AIR-CONDITIONERS OUTDOOR UNITS WILL BE INSTALLED WITH A DOUBLE DECK SYSTEM  
 # 兩部冷氣機室外機將會以雙層系統型式安裝