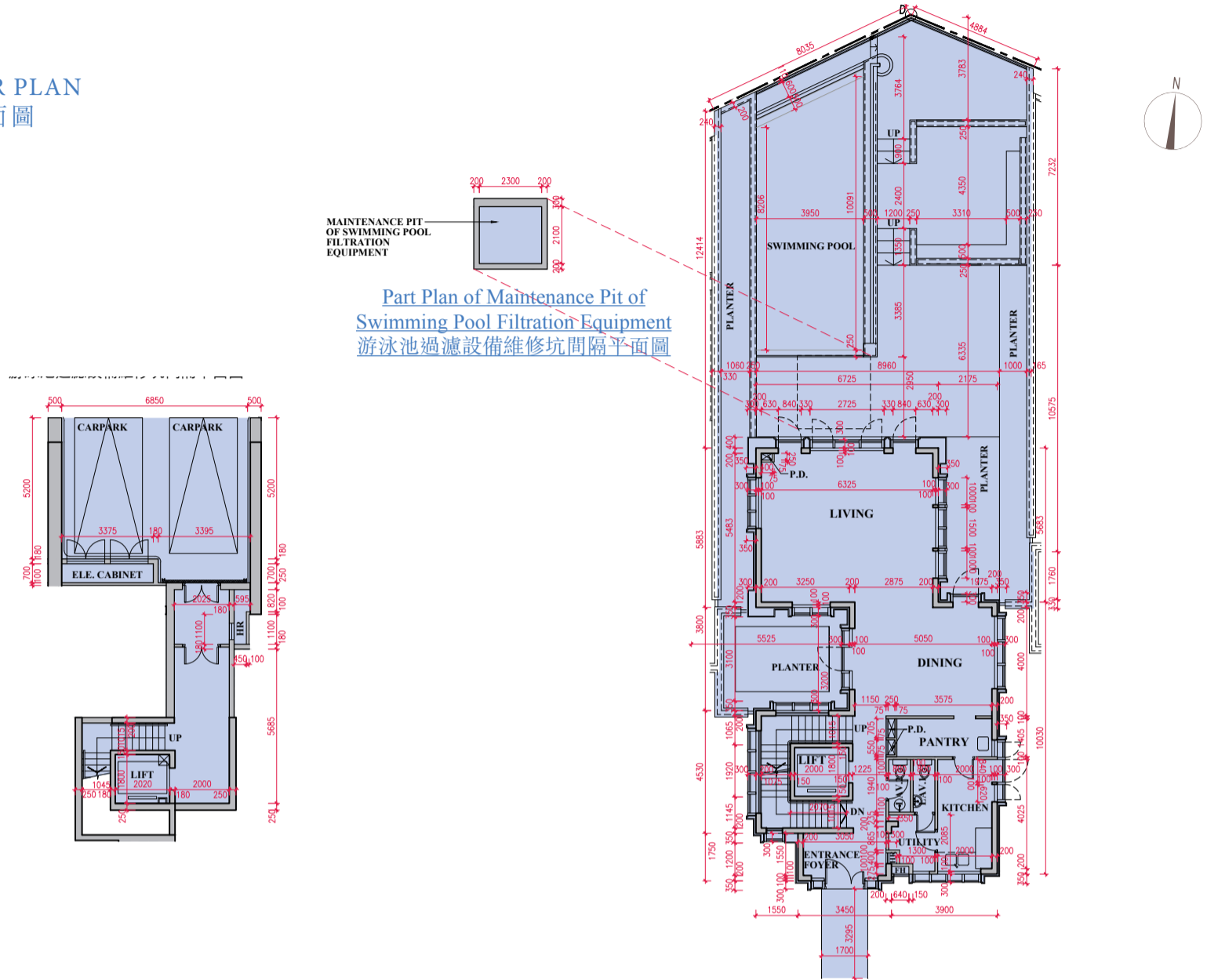


FLOOR PLANS OF RESIDENTIAL PROPERTIES IN THE DEVELOPMENT
發展項目的住宅物業的樓面平面圖

HOUSE 3 FLOOR PLAN
洋房3號樓面平面圖



BASEMENT FLOOR PLAN 地庫平面圖

GROUND FLOOR PLAN 地下平面圖



House 洋房	Floor 樓層	The thickness of the floor slabs (excluding plaster) of each residential property (mm) 每個住宅物業的樓板 (不包括灰泥) 的厚度 (毫米)	The floor-to-floor height (refers to the height between the top surface of the structural slab of a floor and the top surface of the structural slab of its immediate upper floor) of each residential property (mm) 每個住宅物業的層與層之間的高度 (指該樓層之石屎地台 面與上一層石屎地台面之高度距離) (毫米)
HOUSE 3 洋房3號	Basement 地庫	300	5350
	G/F 地下	200	4300/4500
	1/F 1樓	150/200/225	3300/3500
	2/F 2樓	150/200	3350/3500
	Roof 天台	150/225	2550/2700
	Top Roof 上層天台	150	

1. The internal areas of the residential properties on the upper floors will generally be slightly larger than those on the lower floors because of the reducing thickness of the structural walls on the upper floors. (Not applicable)

1. 因住宅物業的較高樓層的結構牆的厚度遞減，較高樓層的內部面積，一般比較低樓層的內部面積稍大。(不適用)

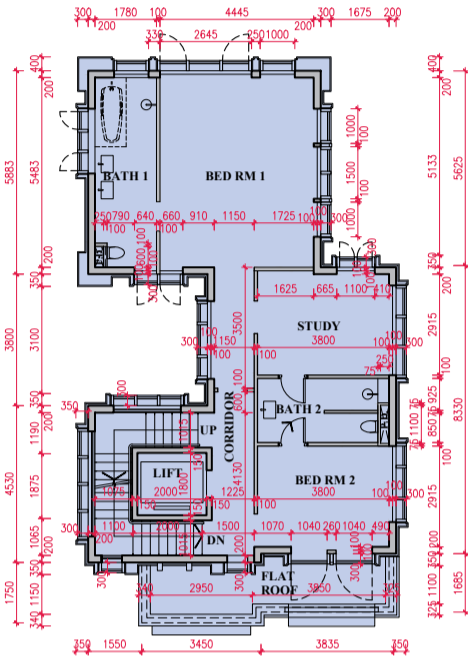
Notes:

- A. Floor to floor height is measured from the structural floor level.
- B. Floor to floor height for Basement Floor is measured at the lift lobby of each house.
- C. Information on floor to floor height shall be according to Buildings Department Approved Plans.
- D. Floor to floor height for Roof is measured up to the roof of top roof.
- E. The dimensions in the floor plans are all structural dimensions in millimetre.
- F. Please refer to page 18 of this sales brochure for legend of the terms and abbreviation shown on the floor plan above.

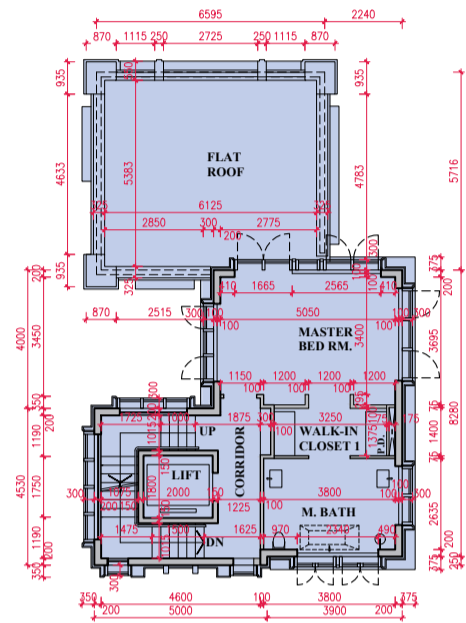
附註:

- A. 層與層之間的高度是從結構層表面測量起計。
- B. 地庫樓層的層與層之間的高度以每座洋房的升降機大堂所測量的數值為準。
- C. 每個層與層之間的高度按照屋宇署所批准的圖則為準。
- D. 天台層的層與層之間的高度計算以達至上層天台屋頂面層為準。
- E. 樓面平面圖所列之尺寸為以毫米標示之建築結構尺寸。
- F. 以上平面圖中顯示之名詞及簡稱請參閱本售樓說明書第18頁。

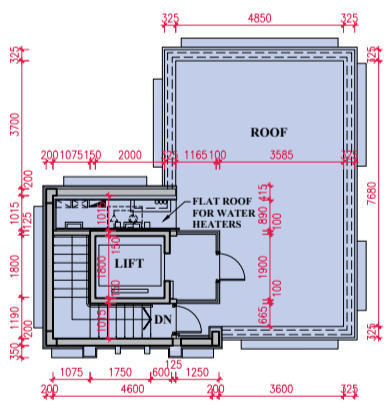
FLOOR PLANS OF RESIDENTIAL PROPERTIES IN THE DEVELOPMENT
發展項目的住宅物業的樓面平面圖



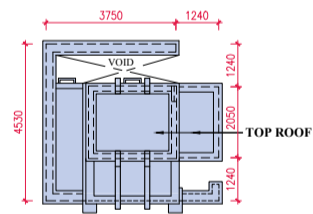
FIRST FLOOR PLAN 一樓平面圖



SECOND FLOOR PLAN 二樓平面圖



ROOF FLOOR PLAN 天台平面圖



TOP ROOF FLOOR PLAN 上層天台平面圖

SCALE(比例)

