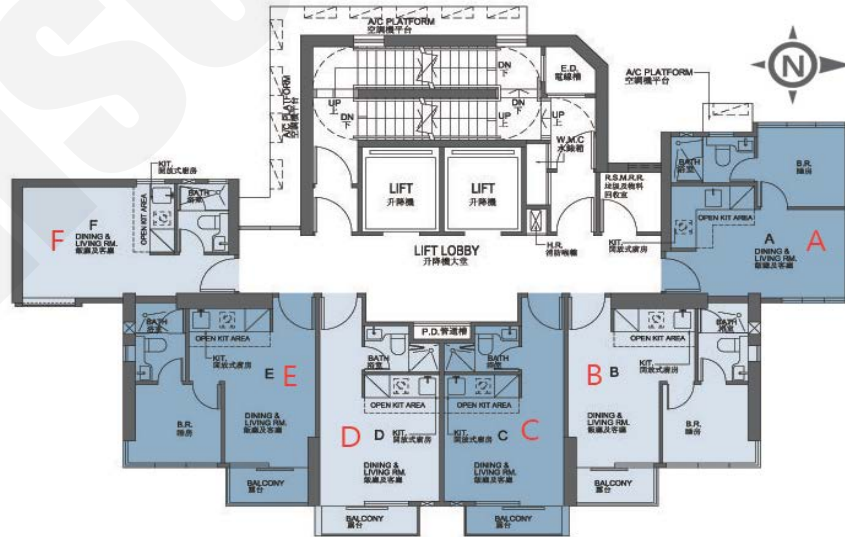


**曼翹**

價單1號

以最高18%折扣計算  
制作日期: 2021-09-10

F: 開放式 192'		
樓層	訂價	折實價18%
15	\$4,782,000 @\$24,906	\$3,921,240 @\$20,423
13	\$4,734,000 @\$24,656	\$3,881,880 @\$20,218
12	\$4,687,000 @\$24,411	\$3,843,340 @\$20,017
11	\$4,463,000 @\$23,245	\$3,659,660 @\$19,061
10	\$4,420,000 @\$23,021	\$3,624,400 @\$18,877
9	\$4,376,000 @\$22,792	\$3,588,320 @\$18,689
8	\$4,207,000 @\$21,911	\$3,449,740 @\$17,967
7	\$4,126,000 @\$21,490	\$3,383,320 @\$17,621
6	\$4,046,000 @\$21,073	\$3,317,720 @\$17,280
E: 1房連套房 249'		
樓層	訂價	折實價18%
13	\$6,283,000 @\$25,233	\$5,152,060 @\$20,691
12	\$6,221,000 @\$24,984	\$5,101,220 @\$20,487
11	\$5,924,000 @\$23,791	\$4,857,680 @\$19,509
10	\$5,866,000 @\$23,558	\$4,810,120 @\$19,318
9	\$5,807,000 @\$23,321	\$4,761,740 @\$19,123
8	\$5,750,000 @\$23,092	\$4,715,000 @\$18,936
7	\$5,637,000 @\$22,639	\$4,622,340 @\$18,564
6	\$5,473,000 @\$21,980	\$4,487,860 @\$18,024
5	\$5,427,000 @\$21,795	\$4,450,140 @\$17,872
D: 開放式 186'		
樓層	訂價	折實價18%
13	\$4,889,000 @\$26,285	\$4,008,980 @\$21,554
12	\$4,840,000 @\$26,022	\$3,968,800 @\$21,338
11	\$4,610,000 @\$24,785	\$3,780,200 @\$20,324
10	\$4,563,000 @\$24,532	\$3,741,660 @\$20,116
9	\$4,518,000 @\$24,290	\$3,704,760 @\$19,918
8	\$4,474,000 @\$24,054	\$3,668,680 @\$19,724
7	\$4,387,000 @\$23,586	\$3,597,340 @\$19,341
6	\$4,259,000 @\$22,898	\$3,492,380 @\$18,776
5	\$4,216,000 @\$22,667	\$3,457,120 @\$18,587



B: 1房連套房 250'		
樓層	訂價	折實價18%
13	\$6,441,000 @\$25,764	\$5,281,620 @\$21,126
12	\$6,378,000 @\$25,512	\$5,229,960 @\$20,920
11	\$6,074,000 @\$24,296	\$4,980,680 @\$19,923
10	\$6,013,000 @\$24,052	\$4,930,660 @\$19,723
9	\$5,955,000 @\$23,820	\$4,883,100 @\$19,532
8	\$5,895,000 @\$23,580	\$4,833,900 @\$19,336
7	\$5,779,000 @\$23,116	\$4,738,780 @\$18,955
6	\$5,667,000 @\$22,668	\$4,646,940 @\$18,588
5	\$5,610,000 @\$22,440	\$4,600,200 @\$18,401

A: 1房連套房 232'		
樓層	訂價	折實價18%
12	\$6,277,000 @\$27,056	\$5,147,140 @\$22,186
11	\$5,978,000 @\$25,767	\$4,901,960 @\$21,129
10	\$5,920,000 @\$25,517	\$4,854,400 @\$20,924
9	\$5,861,000 @\$25,263	\$4,806,020 @\$20,716
8	\$5,802,000 @\$25,009	\$4,757,640 @\$20,507
7	\$5,689,000 @\$24,522	\$4,664,980 @\$20,108
6	\$5,577,000 @\$24,039	\$4,573,140 @\$19,712

C: 開放式 186'		
樓層	訂價	折實價18%
11	\$4,656,000 @\$25,032	\$3,817,920 @\$20,526
10	\$4,610,000 @\$24,785	\$3,780,200 @\$20,324
9	\$4,563,000 @\$24,532	\$3,741,660 @\$20,116
8	\$4,518,000 @\$24,290	\$3,704,760 @\$19,918
7	\$4,430,000 @\$23,817	\$3,632,600 @\$19,530
6	\$4,301,000 @\$23,124	\$3,526,820 @\$18,961
5	\$4,259,000 @\$22,898	\$3,492,380 @\$18,776

紅色為最高售價、最高平均呎價；藍色為最低售價、最低平均呎價

以上的物業資料只供參考，一切以發展商最新公布為準，如有任何資料錯漏本網頁不會承擔任何責任。