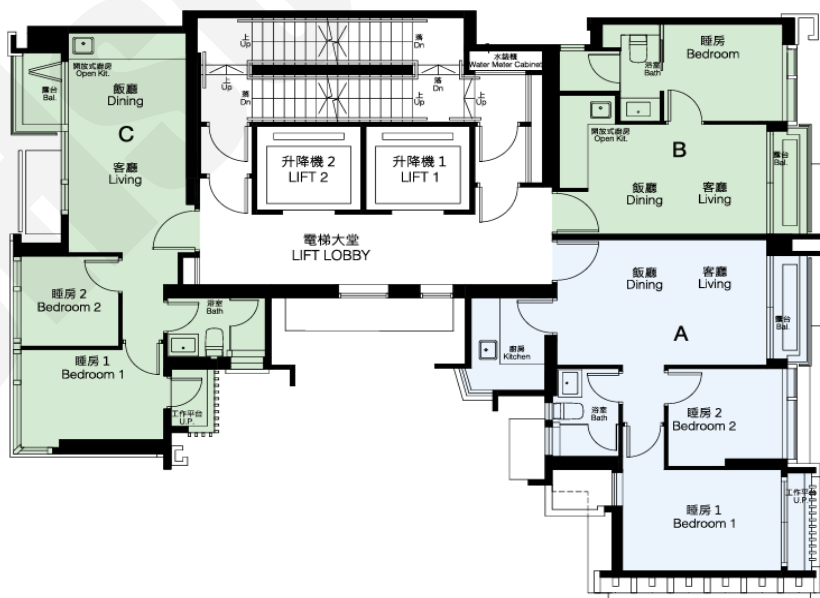


芳菲

價單1號

以最高12%折扣計算

制作日期: 2021-07-26



A : 2房 465'		
樓層	訂價	折實價10%
21	\$15,055,000 @\$32,376	\$13,248,400 @\$28,491
18	\$14,619,000 @\$31,439	\$12,864,720 @\$27,666
17	\$14,338,000 @\$30,834	\$12,617,440 @\$27,134
16	\$14,199,000 @\$30,535	\$12,495,120 @\$26,871
11	\$13,791,000 @\$29,658	\$12,136,080 @\$26,099
10	\$13,655,000 @\$29,366	\$12,016,400 @\$25,842
9	\$13,525,000 @\$29,086	\$11,902,000 @\$25,596
6	\$13,009,000 @\$27,976	\$11,447,920 @\$24,619
5	\$12,620,000 @\$27,140	\$11,105,600 @\$23,883
3	\$12,496,000 @\$26,873	\$10,996,480 @\$23,648

B : 1房 286'		
樓層	訂價	折實價10%
18	\$9,105,000 @\$31,836	\$8,012,400 @\$28,015
17	\$8,930,000 @\$31,224	\$7,858,400 @\$27,477
16	\$8,844,000 @\$30,923	\$7,782,720 @\$27,212
15	\$8,757,000 @\$30,619	\$7,706,160 @\$26,945
12	\$8,673,000 @\$30,325	\$7,632,240 @\$26,686
11	\$8,589,000 @\$30,031	\$7,558,320 @\$26,428
10	\$8,504,000 @\$29,734	\$7,483,520 @\$26,166
9	\$8,423,000 @\$29,451	\$7,412,240 @\$25,917
8	\$8,340,000 @\$29,161	\$7,339,200 @\$25,662
7	\$8,181,000 @\$28,605	\$7,199,280 @\$25,172
6	\$8,101,000 @\$28,325	\$7,128,880 @\$24,926
5	\$8,023,000 @\$28,052	\$7,060,240 @\$24,686
3	\$7,946,000 @\$27,783	\$6,992,480 @\$24,449
2	\$7,556,000 @\$26,420	\$6,649,280 @\$23,249

C : 2房 414'		
樓層	訂價	折實價10%
9	\$11,889,000 @\$28,717	\$10,462,320 @\$25,271
8	\$11,773,000 @\$28,437	\$10,360,240 @\$25,025
7	\$11,548,000 @\$27,894	\$10,162,240 @\$24,546
6	\$11,330,000 @\$27,367	\$9,970,400 @\$24,083
5	\$11,000,000 @\$26,570	\$9,680,000 @\$23,382
3	\$10,667,000 @\$25,766	\$9,386,960 @\$22,674

紅色為最高售價、最高平均呎價；藍色為最低售價、最低平均呎價

以上的物業資料只供參考，一切以發展商最新公布為準，如有任何資料錯漏本網頁不會承擔任何責任。