

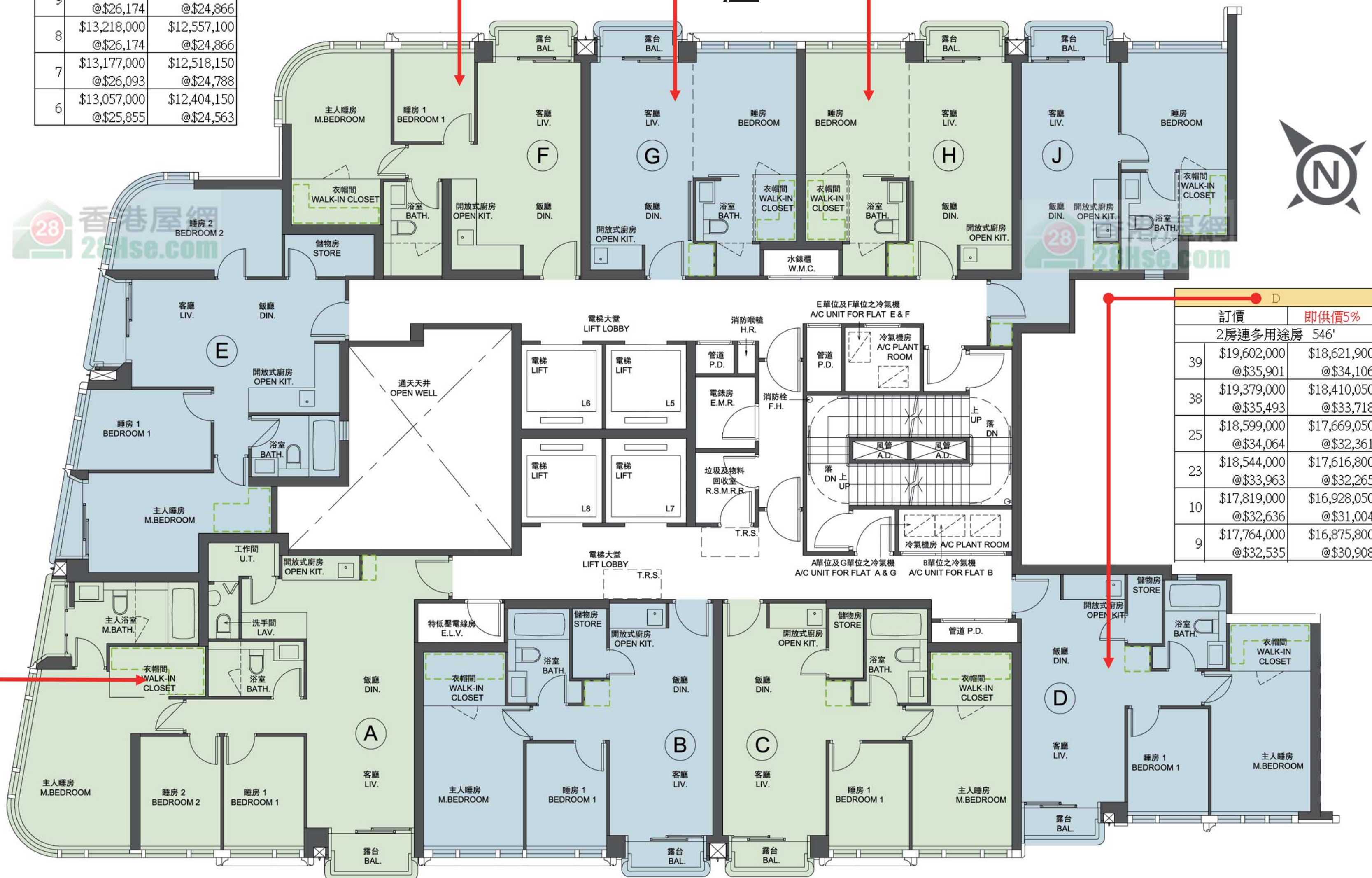
The Henley I

G		即供價5%	
開放式 380'			
31	\$10,489,000	\$9,964,550	@\$27,603
30	\$10,458,000	\$9,935,100	@\$27,521
29	\$10,427,000	\$9,905,650	@\$27,439
28	\$10,396,000	\$9,876,200	@\$27,358
27	\$10,334,000	\$9,817,300	@\$27,195
26	\$10,303,000	\$9,787,850	@\$27,113
25	\$10,272,000	\$9,758,400	@\$27,032
23	\$10,242,000	\$9,729,900	@\$26,953
22	\$10,211,000	\$9,700,450	@\$26,871
21	\$10,180,000	\$9,671,000	@\$26,789
20	\$10,149,000	\$9,641,550	@\$26,708
19	\$10,118,000	\$9,612,100	@\$26,626
18	\$10,118,000	\$9,612,100	@\$26,626
17	\$10,087,000	\$9,582,650	@\$26,545
16	\$10,056,000	\$9,553,200	@\$26,463
15	\$10,025,000	\$9,523,750	@\$26,382
12	\$9,994,000	\$9,494,300	@\$26,300
10	\$9,932,000	\$9,435,400	@\$26,137
9	\$9,901,000	\$9,405,950	@\$26,055
8	\$9,901,000	\$9,405,950	@\$26,055
7	\$9,870,000	\$9,376,500	@\$25,974
6	\$9,777,000	\$9,288,150	@\$25,729

F		即供價5%	
2房 505'			
16	\$13,419,000	\$12,748,050	@\$26,572
15	\$13,379,000	\$12,710,050	@\$26,493
12	\$13,338,000	\$12,671,100	@\$26,412
10	\$13,258,000	\$12,595,100	@\$26,253
9	\$13,218,000	\$12,557,100	@\$26,174
8	\$13,218,000	\$12,557,100	@\$26,174
7	\$13,177,000	\$12,518,150	@\$26,093
6	\$13,057,000	\$12,404,150	@\$25,855

H		即供價5%	
開放式 379'			
31	\$10,413,000	\$9,892,350	@\$27,475
30	\$10,383,000	\$9,863,850	@\$27,396
29	\$10,353,000	\$9,835,350	@\$27,317
28	\$10,323,000	\$9,806,850	@\$27,237
27	\$10,263,000	\$9,749,850	@\$27,079
26	\$10,233,000	\$9,721,350	@\$27,000
25	\$10,203,000	\$9,692,850	@\$26,921
23	\$10,173,000	\$9,664,350	@\$26,842
22	\$10,144,000	\$9,636,800	@\$26,765
21	\$10,114,000	\$9,608,300	@\$26,686
20	\$10,084,000	\$9,579,800	@\$26,607
19	\$10,054,000	\$9,551,300	@\$26,528
18	\$10,054,000	\$9,551,300	@\$26,528
17	\$10,024,000	\$9,522,800	@\$26,449
16	\$9,994,000	\$9,494,300	@\$26,369
15	\$9,964,000	\$9,465,800	@\$26,290
12	\$9,934,000	\$9,437,300	@\$26,211
10	\$9,874,000	\$9,380,300	@\$26,053
9	\$9,844,000	\$9,351,800	@\$25,974
8	\$9,844,000	\$9,351,800	@\$25,974
7	\$9,814,000	\$9,323,300	@\$25,894
6	\$9,727,000	\$9,240,650	@\$25,665

A		即供價5%	
3房連套房及工人套房 889'			
23	\$29,176,000	\$27,717,200	@\$32,819
9	\$27,963,000	\$26,564,850	@\$31,454
8	\$27,960,000	\$26,562,000	@\$31,451



D		即供價5%	
2房連多用途房 546'			
39	\$19,602,000	\$18,621,900	@\$35,901
38	\$19,379,000	\$18,410,050	@\$35,493
25	\$18,599,000	\$17,669,050	@\$34,064
23	\$18,544,000	\$17,616,800	@\$33,963
10	\$17,819,000	\$16,928,050	@\$32,636
9	\$17,764,000	\$16,875,800	@\$32,535

以上單位訂價圖由28HSE製作

製作日期：2021年04月30日

資料來源：新盤網頁(The Henley I)

H		即供價5%		F		即供價5%		E		即供價5%		D		即供價5%	
1房 321'				1房 299'				1房 302'				1房 331'			
6	\$9,011,000	\$8,560,450	@\$28,072	6	\$8,191,000	\$7,781,450	@\$27,395	6	\$8,278,000	\$7,864,100	@\$27,411	6	\$8,980,000	\$8,531,000	@\$27,130
5	\$8,904,000	\$8,458,800	@\$27,738	5	\$8,096,000	\$7,691,200	@\$27,077	5	\$8,179,000	\$7,770,050	@\$27,083	5	\$8,873,000	\$8,429,350	@\$26,807
3	\$8,823,000	\$8,381,850	@\$27,486	3	\$8,025,000	\$7,623,750	@\$26,839	3	\$8,105,000	\$7,699,750	@\$26,838	3	\$8,792,000	\$8,352,400	@\$26,562
2	\$8,743,000	\$8,305,850	@\$27,237	2	\$7,953,000	\$7,555,350	@\$26,599	2	\$8,031,000	\$7,629,450	@\$26,593	2	\$8,712,000	\$8,276,400	@\$26,320
1	\$8,662,000	\$8,228,900	@\$26,984	1	\$7,883,000	\$7,488,850	@\$26,365	1	\$7,957,000	\$7,559,150	@\$26,348	1	\$8,631,000	\$8,199,450	@\$26,076

低座D座



A		即供價5%	
1房 298/320'			
6	\$9,038,000	\$8,586,100	@\$28,244
5	\$8,930,000	\$8,483,500	@\$27,906
3	\$8,850,000	\$8,407,500	@\$27,656
2	\$8,769,000	\$8,330,550	@\$27,403
1	\$8,730,000	\$8,293,500	@\$27,295

B		即供價5%	
1房 274/296'			
6	\$8,393,000	\$7,973,350	@\$28,355
5	\$8,294,000	\$7,879,300	@\$28,020
3	\$8,220,000	\$7,809,000	@\$27,770
2	\$8,145,000	\$7,737,750	@\$27,517
1	\$8,113,000	\$7,707,350	@\$27,329

C		即供價5%	
1房 299/321'			
6	\$8,884,000	\$8,439,800	@\$27,676
5	\$8,781,000	\$8,341,950	@\$27,355
3	\$8,703,000	\$8,267,850	@\$27,112
2	\$8,626,000	\$8,194,700	@\$26,872
1	\$8,589,000	\$8,159,550	@\$26,726

以上的物業資料只供參考，一切以發展商最新公布為準，如有任何資料錯漏本網頁不會承擔任何責任。