

# 維港滙 I Grand Victoria I

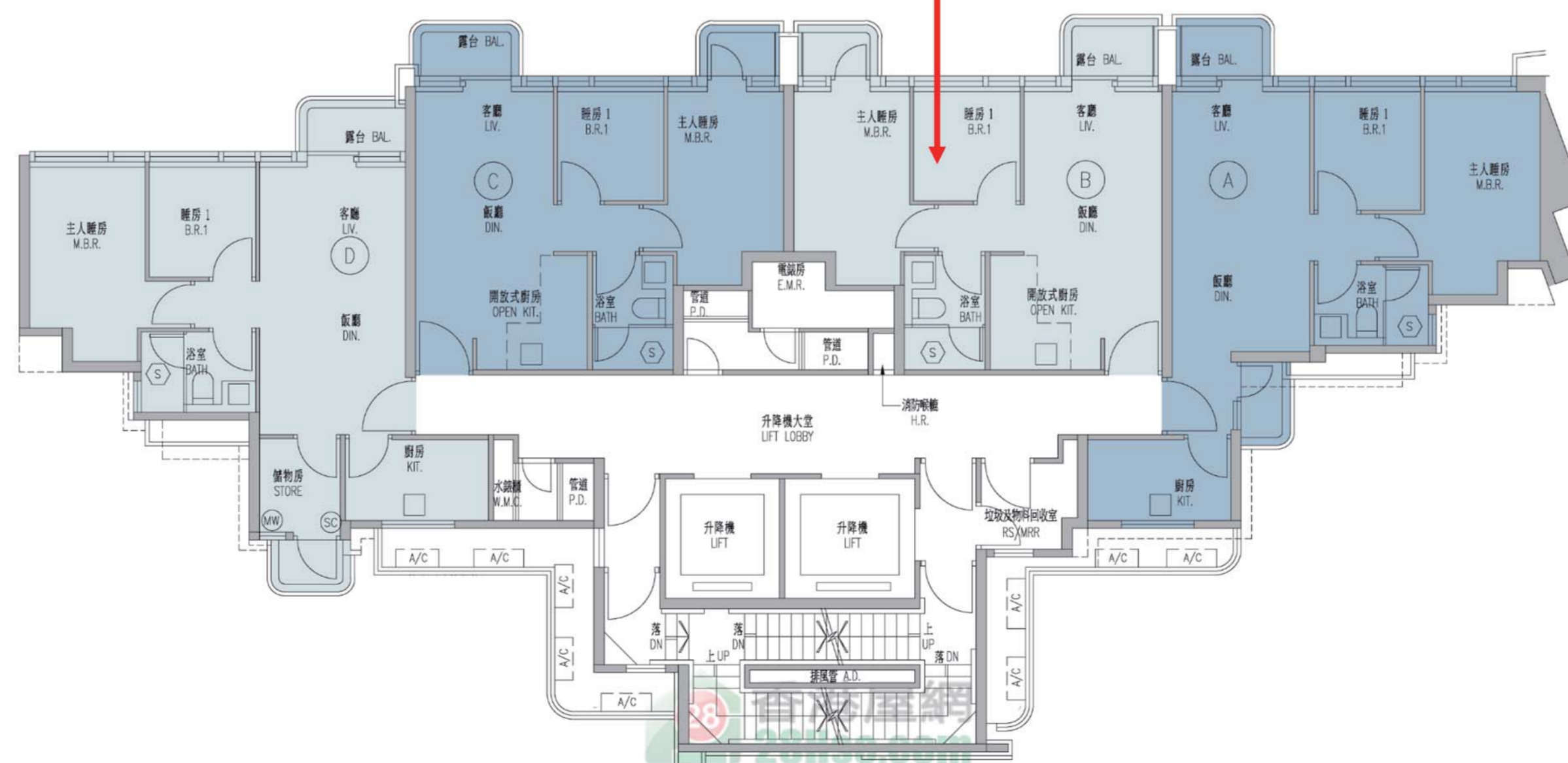
## 3A座

3A座D		訂價	即供價 (-0.055)
2房 532'			
19	\$16,948,000	\$16,015,860	@\$31,105
	@\$31,857	@\$30,105	
18	\$16,948,000	\$16,015,860	@\$31,105
	@\$31,857	@\$30,105	
17	\$16,746,000	\$15,824,970	@\$31,477
	@\$31,477	@\$29,746	
16	\$16,648,000	\$15,732,360	@\$31,293
	@\$31,293	@\$29,572	
15	\$16,548,000	\$15,637,860	@\$31,105
	@\$31,105	@\$29,394	
12	\$16,449,000	\$15,544,305	@\$30,919
	@\$30,919	@\$29,219	
11	\$16,351,000	\$15,451,695	@\$30,735
	@\$30,735	@\$29,045	
10	\$16,254,000	\$15,360,030	@\$30,553
	@\$30,553	@\$28,872	
9	\$16,156,000	\$15,267,420	@\$30,368
	@\$30,368	@\$28,698	
8	\$16,156,000	\$15,267,420	@\$30,368
	@\$30,368	@\$28,698	
7	\$15,965,000	\$15,086,925	@\$30,009
	@\$30,009	@\$28,359	
6	\$15,870,000	\$14,997,150	@\$29,831
	@\$29,831	@\$28,190	
5	\$15,775,000	\$14,907,375	@\$29,652
	@\$29,652	@\$28,021	
3	\$15,681,000	\$14,818,545	@\$29,476
	@\$29,476	@\$27,854	

3A座A		訂價	即供價 (-0.055)
3房連套房及工人套房加儲物室 835'			
16	\$27,556,000	\$26,040,420	@\$33,001
	@\$33,001	@\$31,186	
15	\$27,391,000	\$25,884,495	@\$32,804
	@\$32,804	@\$30,999	
12	\$27,228,000	\$25,730,460	@\$32,608
	@\$32,608	@\$30,815	
11	\$27,066,000	\$25,577,370	@\$32,414
	@\$32,414	@\$30,632	
10	\$26,904,000	\$25,424,280	@\$32,220
	@\$32,220	@\$30,448	
9	\$26,744,000	\$25,273,080	@\$32,029
	@\$32,029	@\$30,267	
8	\$26,744,000	\$25,273,080	@\$32,029
	@\$32,029	@\$30,267	
7	\$26,426,000	\$24,972,570	@\$31,648
	@\$31,648	@\$29,907	

3A座C		訂價	即供價 (-0.055)
2房 493'			
19	\$16,388,000	\$15,486,660	@\$33,241
	@\$33,241	@\$31,413	
18	\$16,388,000	\$15,486,660	@\$33,241
	@\$33,241	@\$31,413	
17	\$16,193,000	\$15,302,385	@\$32,846
	@\$32,846	@\$31,039	
16	\$16,096,000	\$15,210,720	@\$32,649
	@\$32,649	@\$30,853	
15	\$16,000,000	\$15,120,000	@\$32,454
	@\$32,454	@\$30,669	
12	\$15,905,000	\$15,030,225	@\$32,262
	@\$32,262	@\$30,487	
11	\$15,810,000	\$14,940,450	@\$32,069
	@\$32,069	@\$30,305	
10	\$15,716,000	\$14,851,620	@\$31,878
	@\$31,878	@\$30,125	
9	\$15,623,000	\$14,763,735	@\$31,690
	@\$31,690	@\$29,947	
8	\$15,623,000	\$14,763,735	@\$31,690
	@\$31,690	@\$29,947	
7	\$15,436,000	\$14,587,020	@\$31,310
	@\$31,310	@\$29,588	
6	\$15,345,000	\$14,501,025	@\$31,126
	@\$31,126	@\$29,414	
5	\$15,254,000	\$14,415,030	@\$30,941
	@\$30,941	@\$29,239	
3	\$15,163,000	\$14,329,035	@\$30,757
	@\$30,757	@\$29,065	

## 5座



5座B		訂價	即供價 (-0.055)
2房 448'			
20	\$14,659,000	\$13,852,755	@\$32,721
	@\$32,721	@\$30,921	
19	\$14,571,000	\$13,769,595	@\$32,525
	@\$32,525	@\$30,736	
18	\$14,571,000	\$13,769,595	@\$32,525
	@\$32,525	@\$30,736	
17	\$14,399,000	\$13,607,055	@\$32,141
	@\$32,141	@\$30,373	
16	\$14,313,000	\$13,525,785	@\$31,949
	@\$31,949	@\$30,191	
15	\$14,228,000	\$13,445,460	@\$31,759
	@\$31,759	@\$30,012	
12	\$14,143,000	\$13,365,135	@\$31,569
	@\$31,569	@\$29,833	
11	\$14,058,000	\$13,284,810	@\$31,379
	@\$31,379	@\$29,654	
10	\$13,974,000	\$13,205,430	@\$31,192
	@\$31,192	@\$29,476	
9	\$13,891,000	\$13,126,995	@\$31,007
	@\$31,007	@\$29,301	
8	\$13,891,000	\$13,126,995	@\$31,007
	@\$31,007	@\$29,301	
7	\$13,726,000	\$12,971,070	@\$30,638
	@\$30,638	@\$28,953	
6	\$13,644,000	\$12,993,580	@\$30,455
	@\$30,455	@\$28,780	
5	\$13,563,000	\$12,817,035	@\$30,275
	@\$30,275	@\$28,609	
3	\$13,483,000	\$12,741,435	@\$30,096
	@\$30,096	@\$28,441	

以上單位訂價圖由28HSE製作  
製作日期：2021年03月08日  
資料來源：新盤網頁(維港滙I)