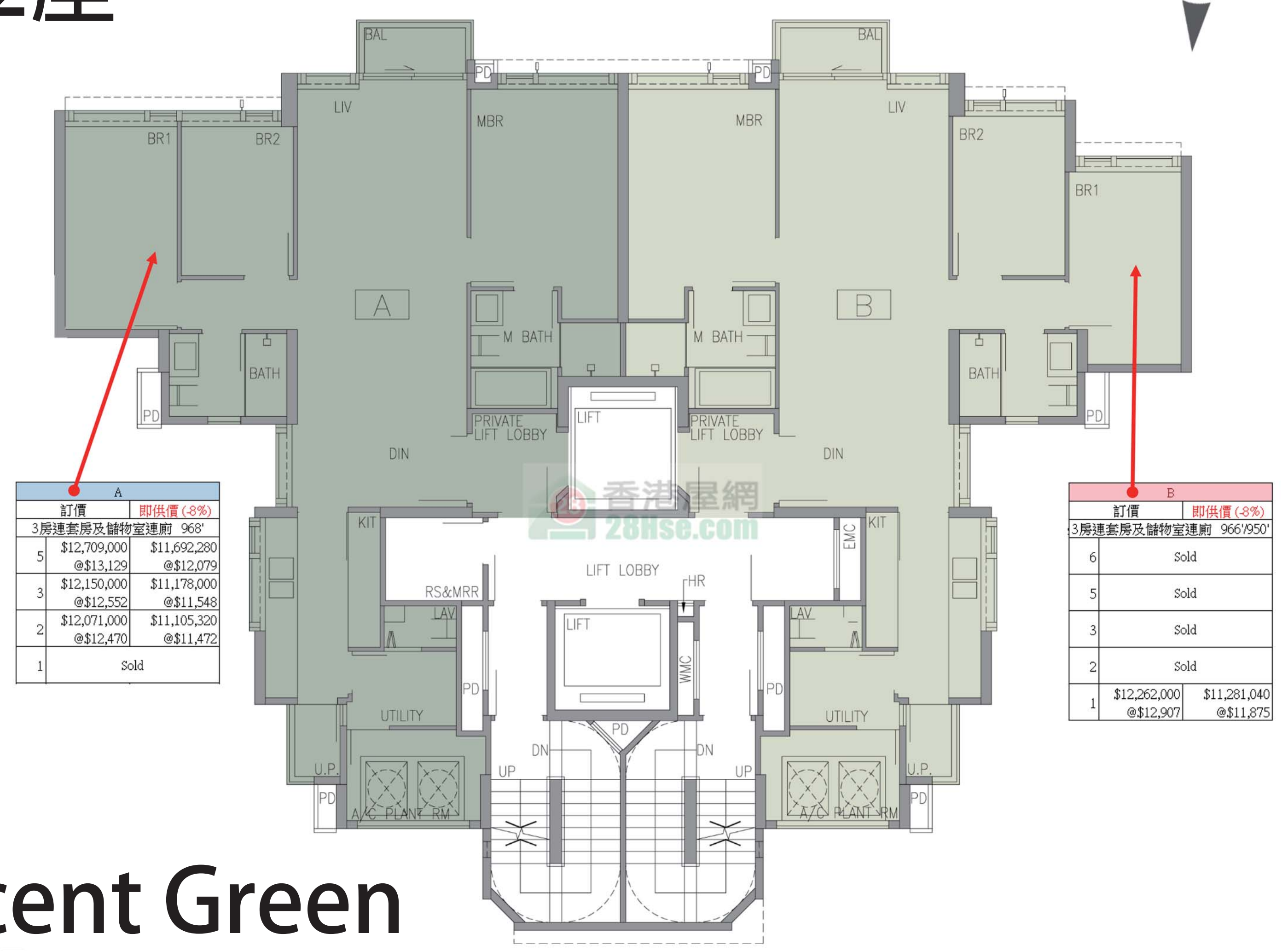


訂價	即供價 (-8%)
3房連套房及儲物室連廁 970/954'	
3	\$12,869,000 @ \$13,267
2	\$12,790,000 @ \$13,186
1	\$12,578,000 @ \$13,184

訂價	即供價 (-8%)
3房連套房及儲物室連廁 966/950'	
3	\$12,180,000 @ \$12,609
2	\$12,101,000 @ \$12,527
1	\$11,946,000 @ \$12,575



訂價	即供價 (-8%)
3房連套房及儲物室連廁 968'	
5	\$12,709,000 @ \$13,129
3	\$12,150,000 @ \$12,552
2	\$12,071,000 @ \$12,470
1	Sold

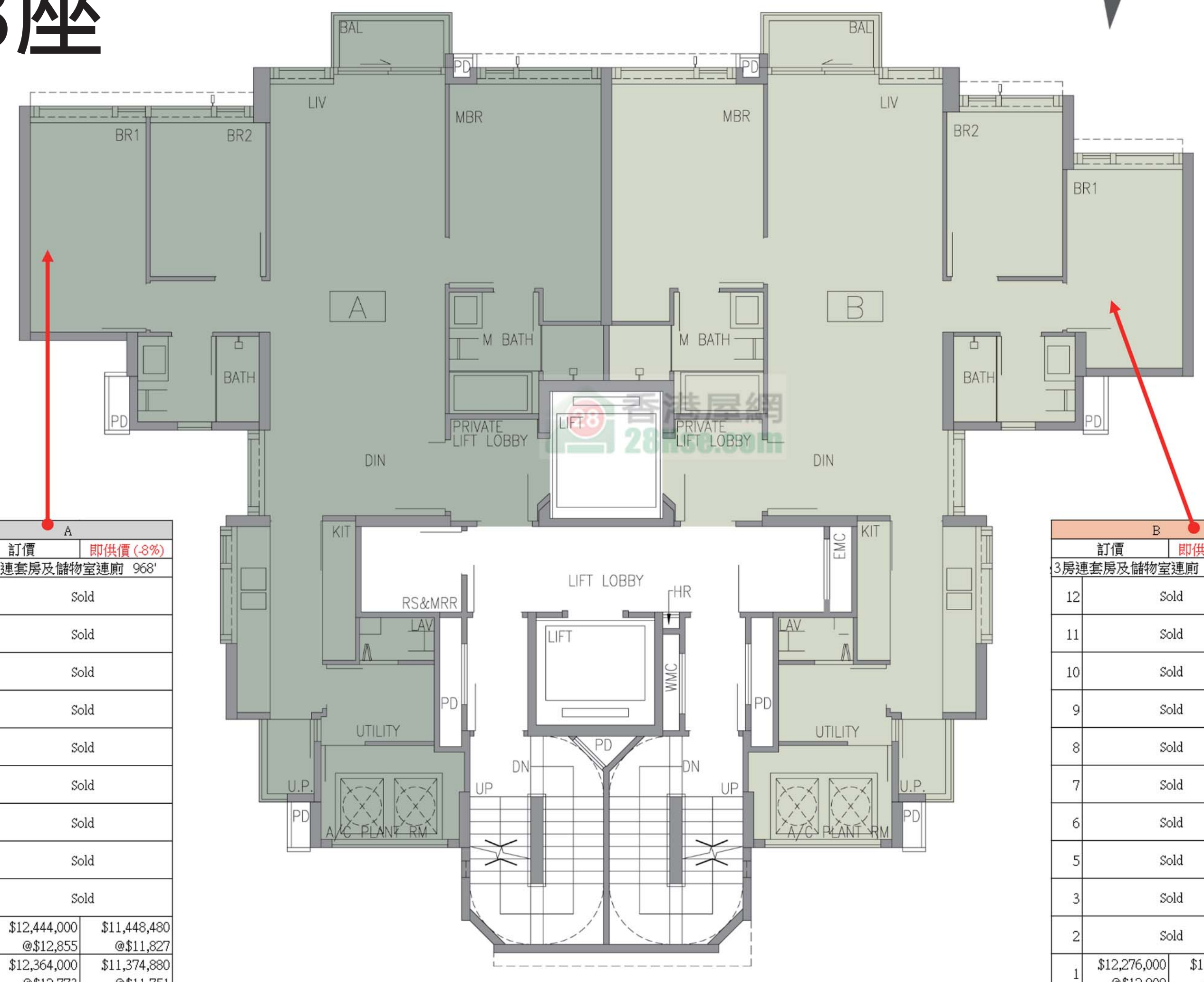
訂價	即供價 (-8%)
3房連套房及儲物室連廁 966/950'	
6	Sold
5	Sold
3	Sold
2	Sold
1	\$12,262,000 @ \$12,907

以上單位訂價圖由28HSE製作  
製作日期：2019年11月19日  
資料來源：新盤網頁(山水盈)

# 山水盈 Crescent Green

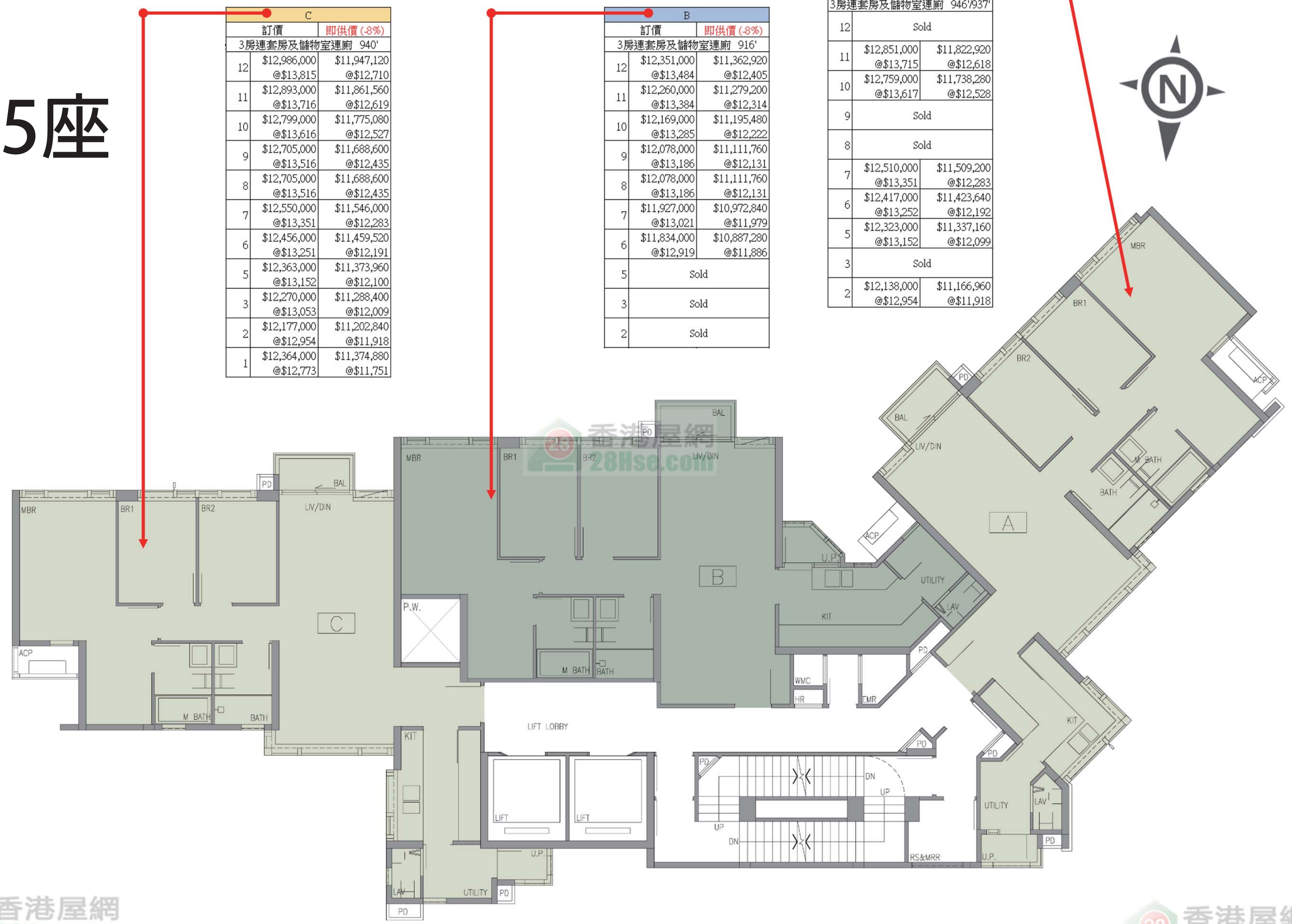
## 3座

## 5座



訂價	即供價 (-8%)
3房連套房及儲物室連廁 968'	
12	Sold
11	Sold
10	Sold
9	Sold
8	Sold
7	Sold
6	Sold
5	Sold
3	Sold
2	\$12,444,000 @ \$12,855
1	\$12,364,000 @ \$12,773

訂價	即供價 (-8%)
3房連套房及儲物室連廁 967/951'	
12	Sold
11	Sold
10	Sold
9	Sold
8	Sold
7	Sold
6	Sold
5	Sold
3	Sold
2	Sold
1	\$12,276,000 @ \$12,909



訂價	即供價 (-8%)
3房連套房及儲物室連廁 940'	
12	\$12,986,000 @ \$13,815
11	\$12,893,000 @ \$13,716
10	\$12,799,000 @ \$13,616
9	\$12,705,000 @ \$13,516
8	\$12,705,000 @ \$13,516
7	\$12,550,000 @ \$13,351
6	\$12,456,000 @ \$13,251
5	\$12,363,000 @ \$13,152
3	\$12,270,000 @ \$13,053
2	\$12,177,000 @ \$12,954
1	\$12,364,000 @ \$12,773

訂價	即供價 (-8%)
3房連套房及儲物室連廁 916'	
12	\$12,351,000 @ \$13,484
11	\$12,260,000 @ \$13,384
10	\$12,169,000 @ \$13,285
9	\$12,078,000 @ \$13,186
8	\$12,078,000 @ \$13,186
7	\$11,927,000 @ \$13,021
6	\$11,834,000 @ \$12,919
5	Sold
3	Sold
2	Sold

訂價	即供價 (-8%)
3房連套房及儲物室連廁 946/937'	
12	Sold
11	\$12,851,000 @ \$13,715
10	\$12,759,000 @ \$13,617
9	Sold
8	Sold
7	\$12,510,000 @ \$13,351
6	\$12,417,000 @ \$13,252
5	\$12,323,000 @ \$13,152
3	Sold
2	\$12,138,000 @ \$12,954

以上的物業資料只供參考，一切以發展商最新公布為準，如有任何資料錯誤本網頁不會承擔任何責任。